



RIEVO



THE COMPANY



Rievo is the **R&D department** of Stefal Srl. We develop, design and produce platform for lifting and transport of light industrial loads.

Research and development, design, **production**, are all made in Italy, in San Giovanni in Persiceto (Bologna). 80% of the raw materials we employ is of European origin.

An organized production line and our stock allow us to be extremely ready and flexible to satisfy our customers' requests with particular regard to the **supply speed**.

We supply our customers with **assistance** and **maintenance** services in order to personally manage any eventual problem and to provide a timely intervention in order to minimize the inconveniences.





EVOLIFT LINE

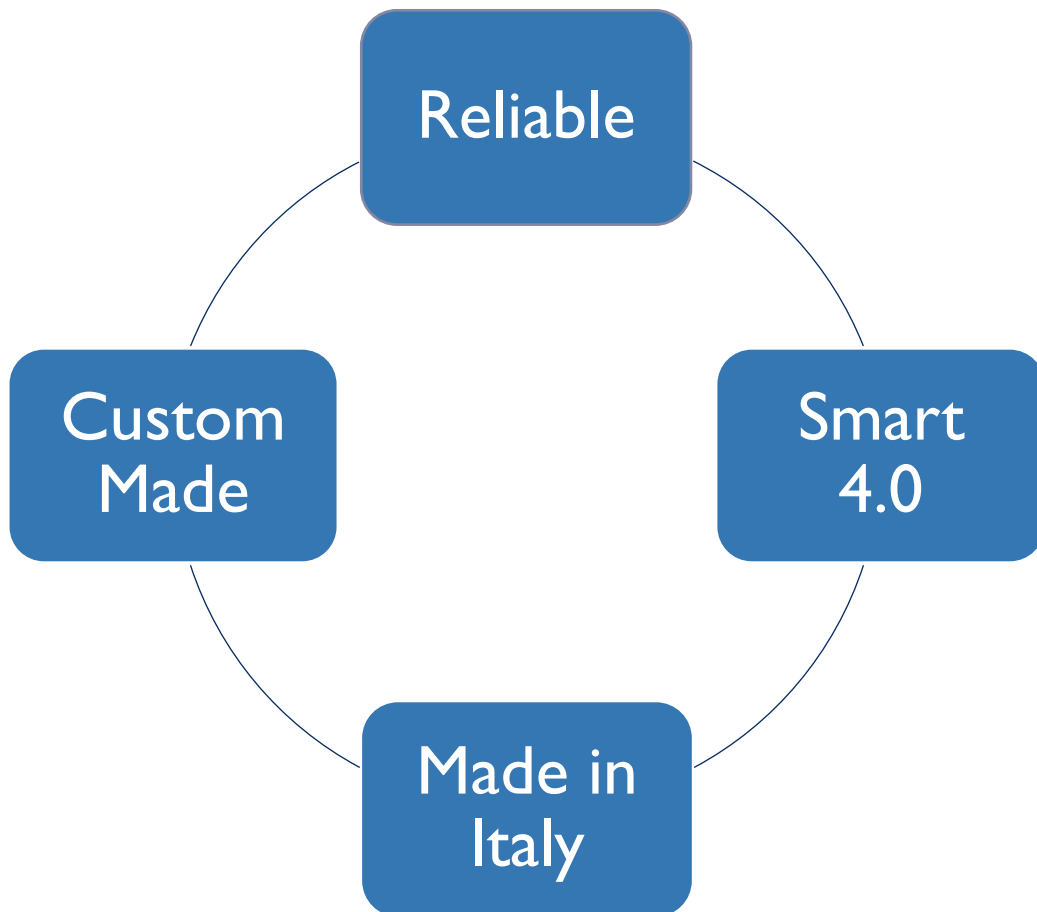
REGULATIONS

Our lifters satisfy all CE regulations and are furnished of CE label.

WARRANTY

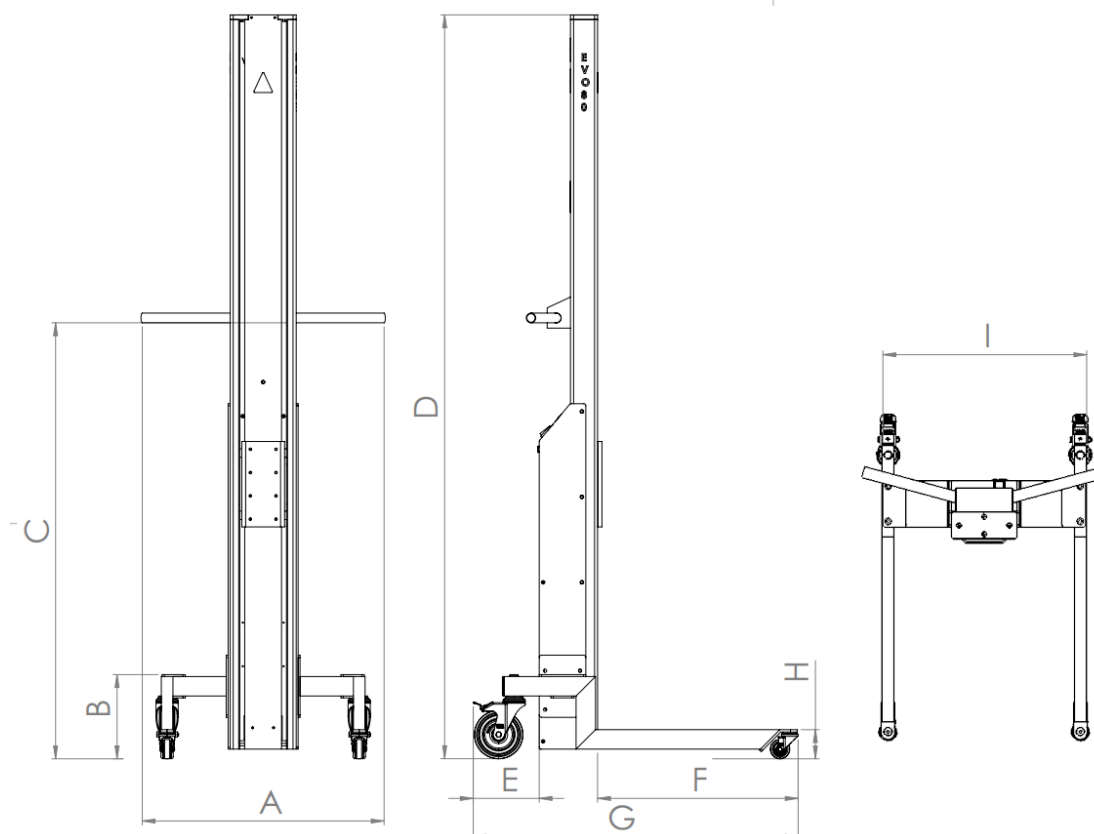
Our products are covered by a 12 months warranty starting from the delivery date.

OUR STRONG POINTS



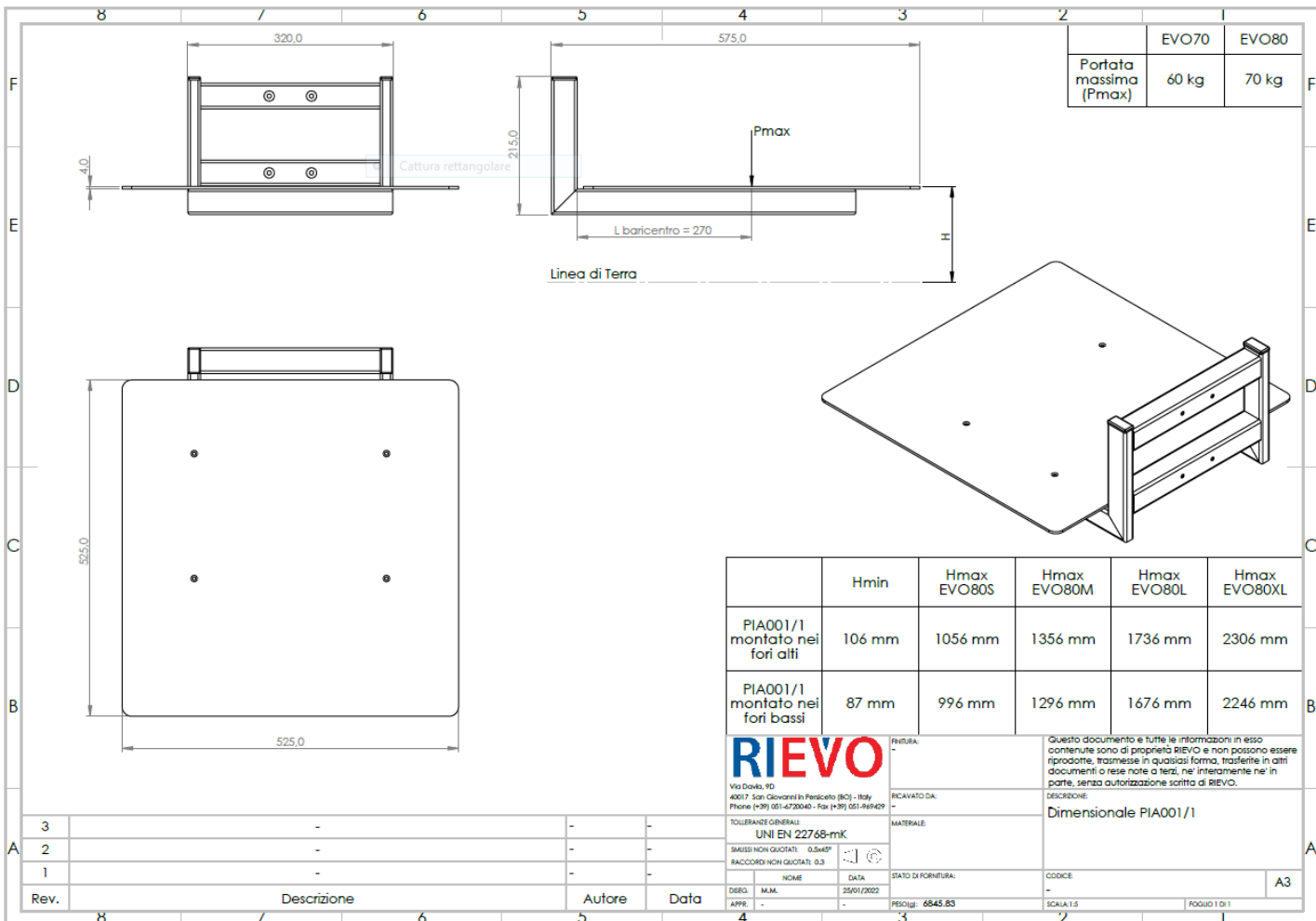
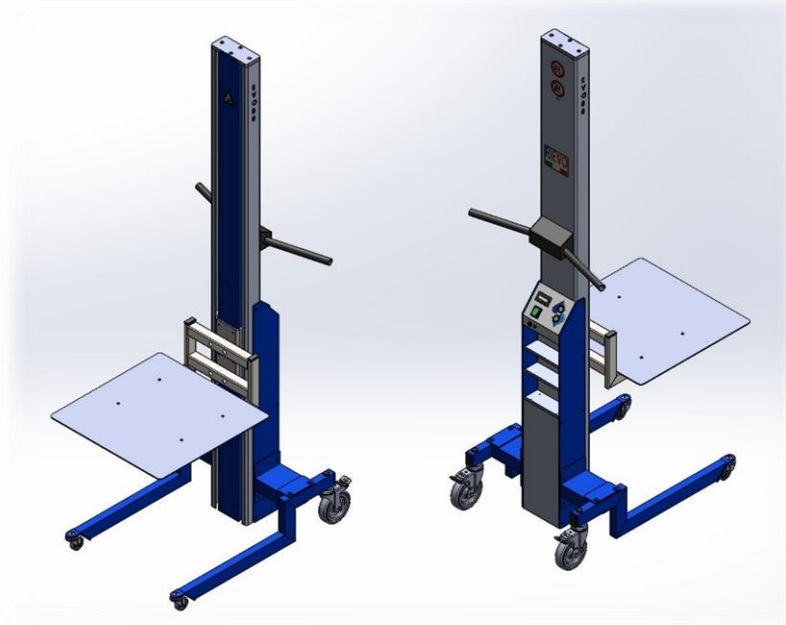
TECHNICAL DATA

- Maximum capacity: 80 Kg
- Aluminum and steel structure to guarantee strength, lightness and an easy handling
- Weight of the truck (without accessories): about 30 Kg to 112 kg (varying in case of ballasts)
- Powered lift and descent movement (speed 125 mm/s) with rubber toothed belt and steel strands
- Anti-crushing safety dispositive operative during the descent movement in all models
- 24 V power supply (2 12 V 7 Ah batteries)
- LCD display with battery charge status, voltage and charge percent indicator
- Lowered front spars in order to facilitate insertion under pallets or similar
- Pivoting front and rear wheels equipped with bearings in order to guarantee better handling smoothness and easiness
- Blocking dispositive on the rear wheels
- Energy recovery system during downwards movement
- At least 100 up- and downwards cycles autonomy with maximum load
- Complete charging in 6 hours with supplied charger
- Absence of oil, grease in internal mechanisms
- Absence of Teflon components
- Integrated safety fusible for system protection in case of malfunctions, accessible from outside
- Side plaque with identificatory, dimensional and functional data of the machine and CE marking
- Accompanying kit: use and maintenance manual, CE certificate, list of checking tests, external 220 V charger

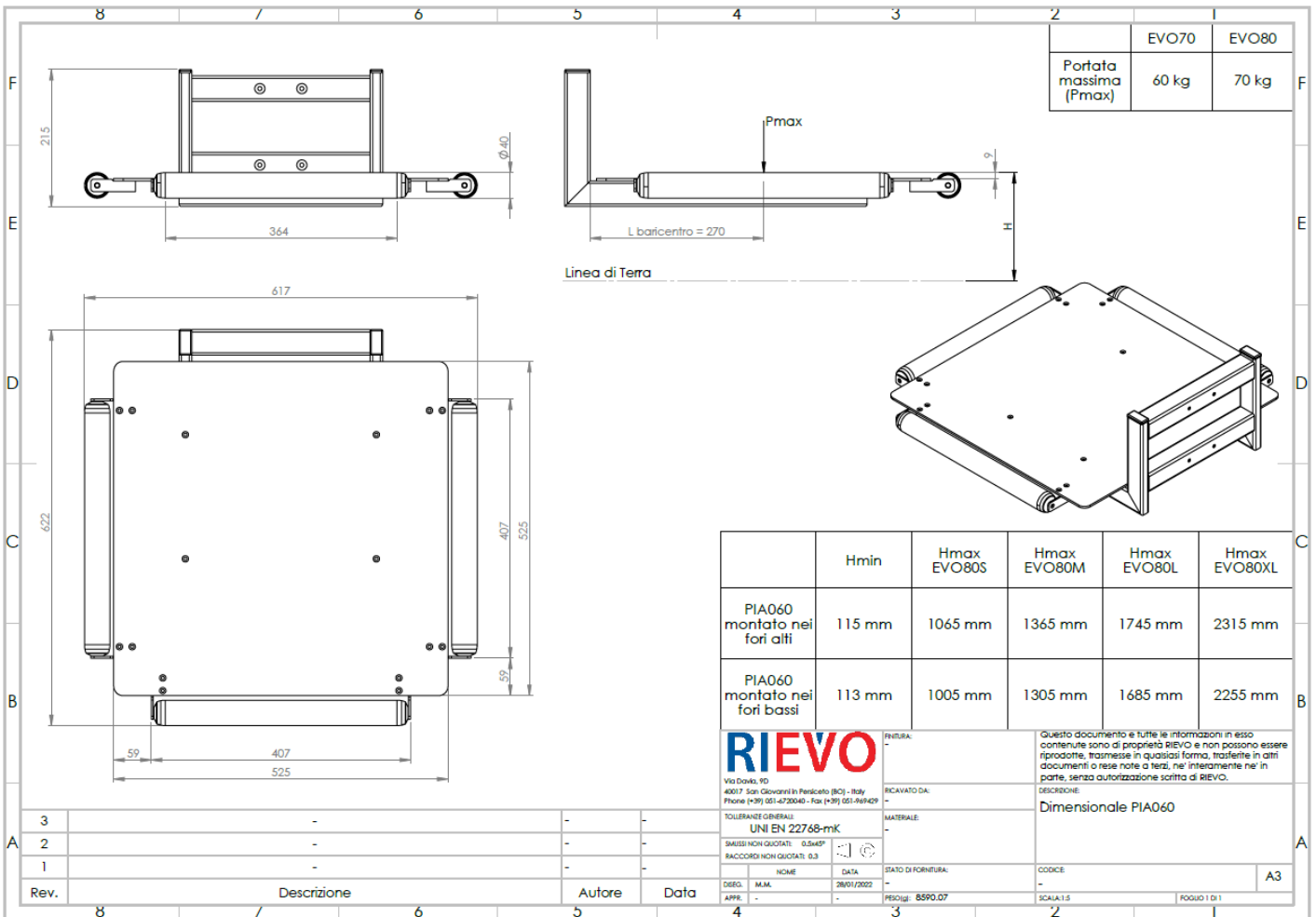
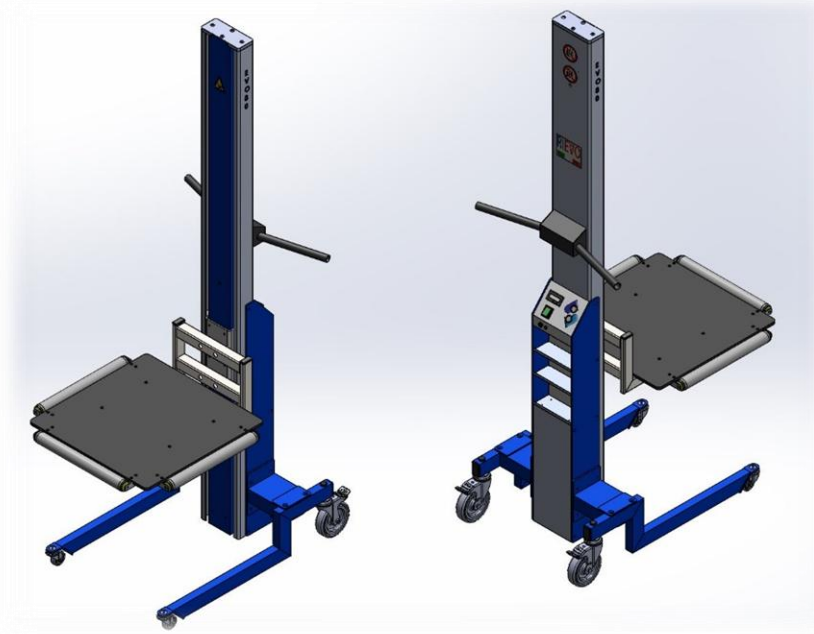


Product code	Dimensions mm									Weight Kg	Lifting height mm
	A	B	C	D	E	F	G	H	I		
EVO80 XL	629	211	1124	2487	171	520	855	75	525	40	2200
EVO80 L	629	211	1124	1917	171	520	855	75	525	37	1635
EVO80 M	629	211	1124	1536	171	520	855	75	525	34	1250
EVO 80 S	629	211	1124	1236	171	520	855	75	525	30	950

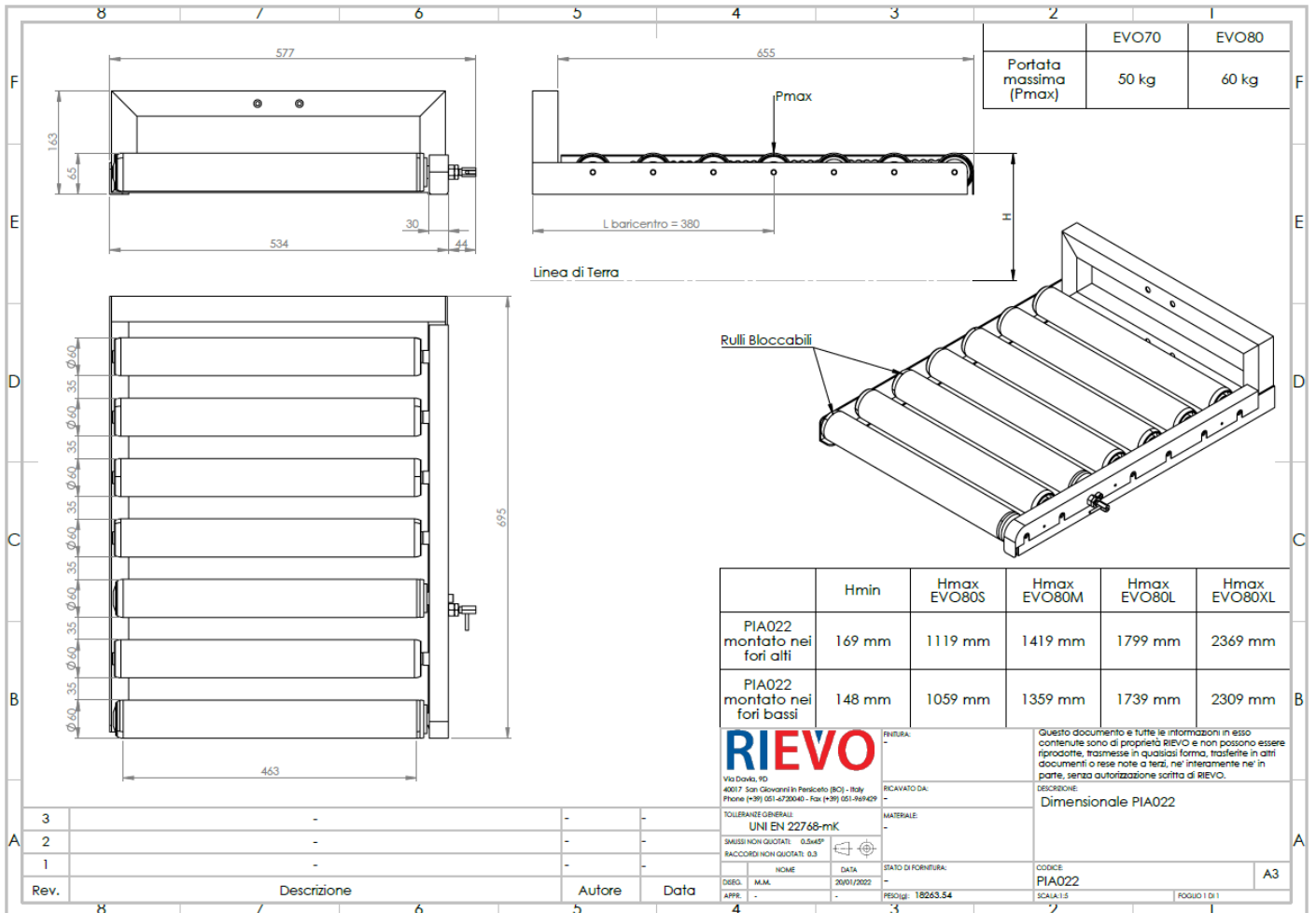
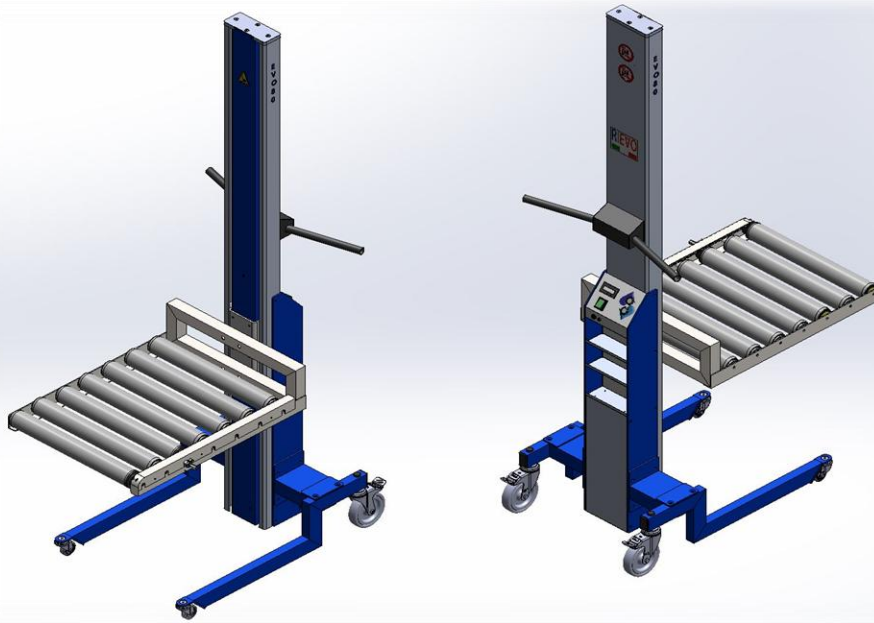
EVO80 LIFTER WITH ALUMINIUM PLATFORM



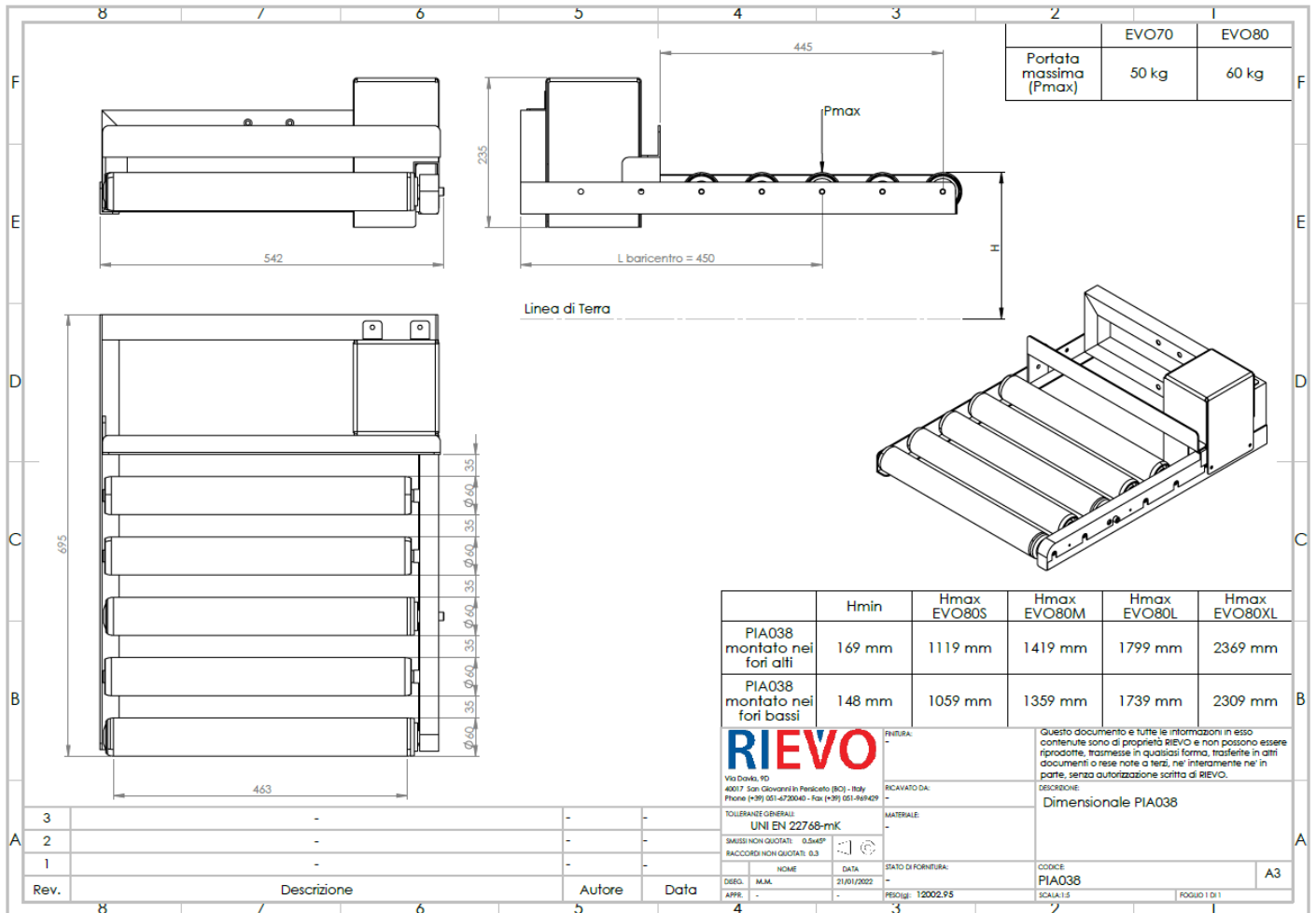
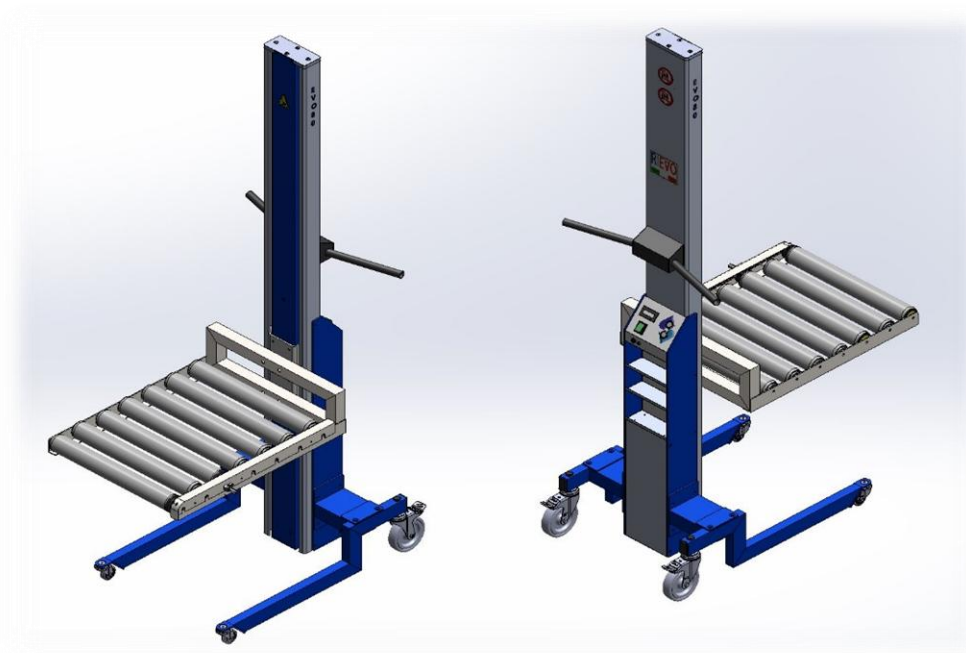
EVO80 LIFTER PLATFORM WITH SIDE ROLLERS



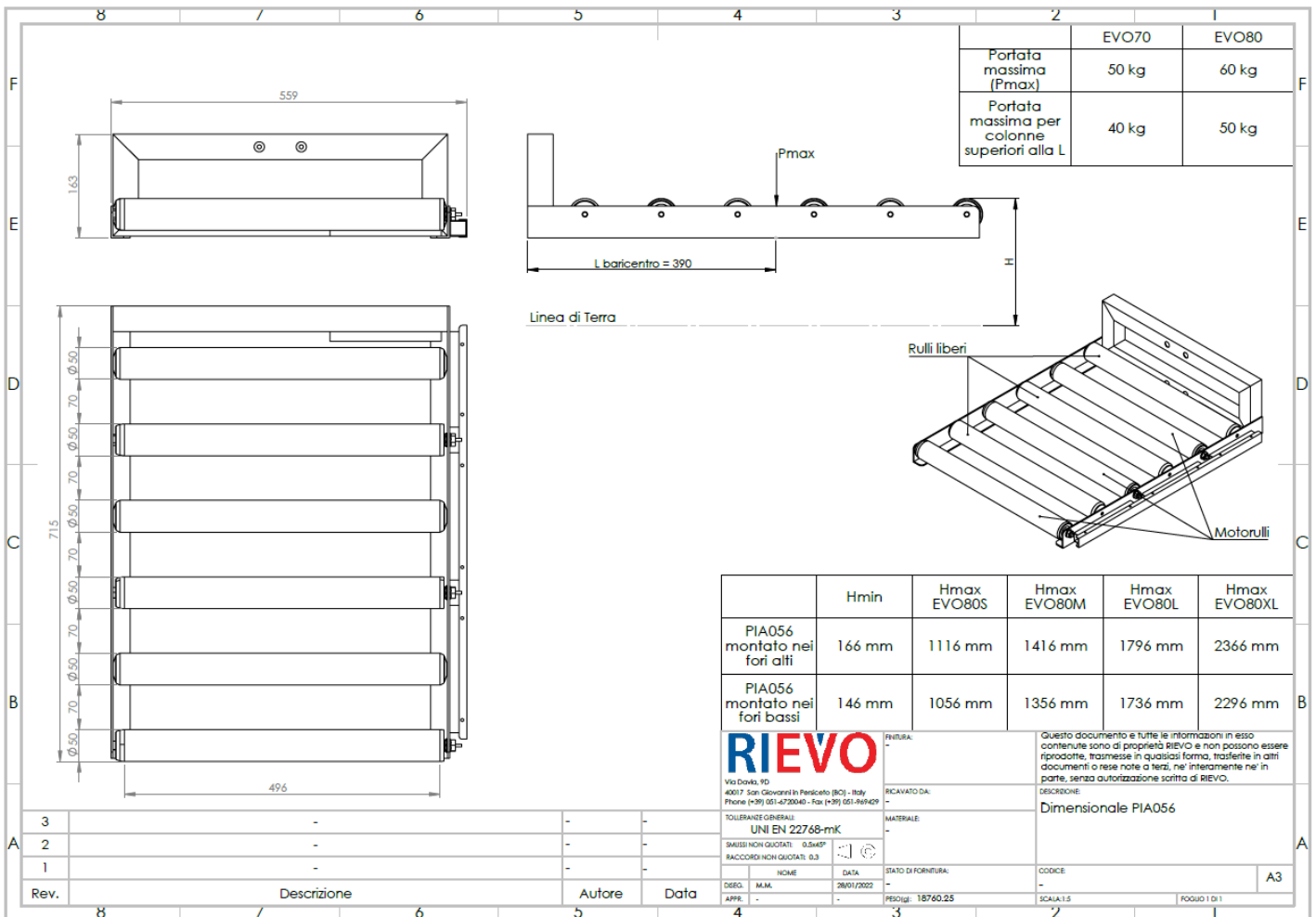
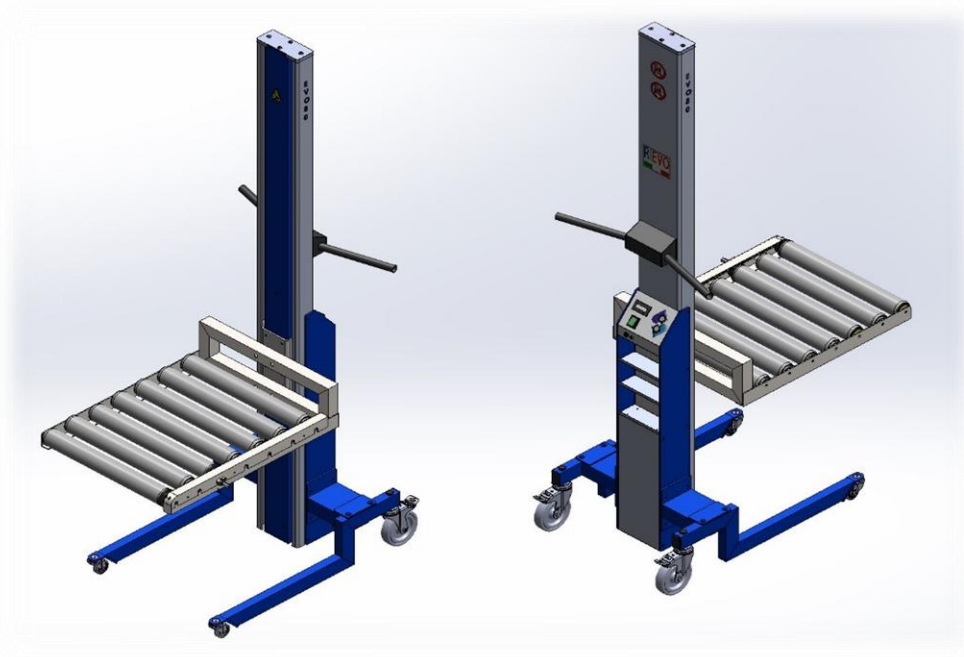
EVO80 LIFTER WITH BLOCKABLE LONGITUDINAL ROLLERS



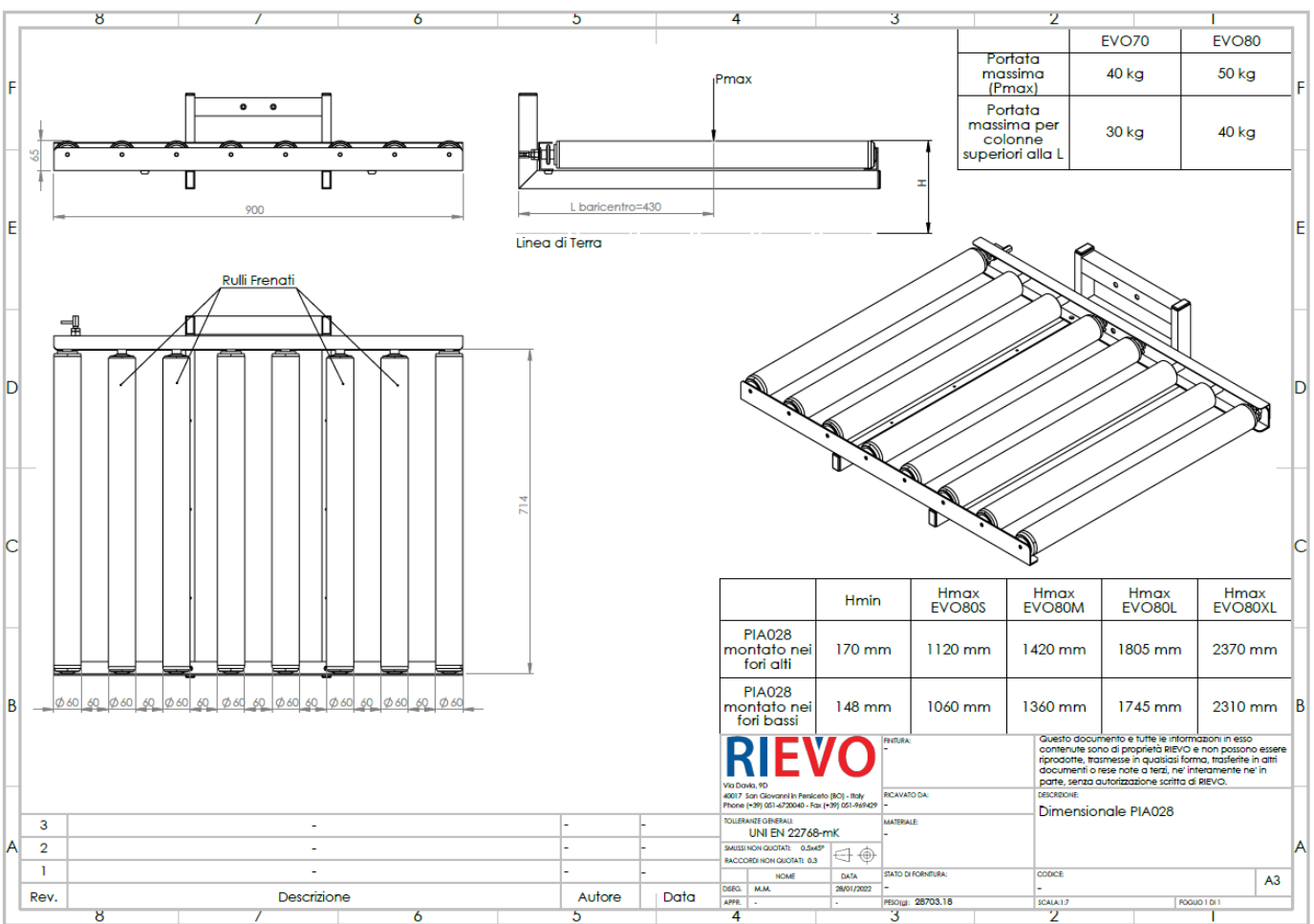
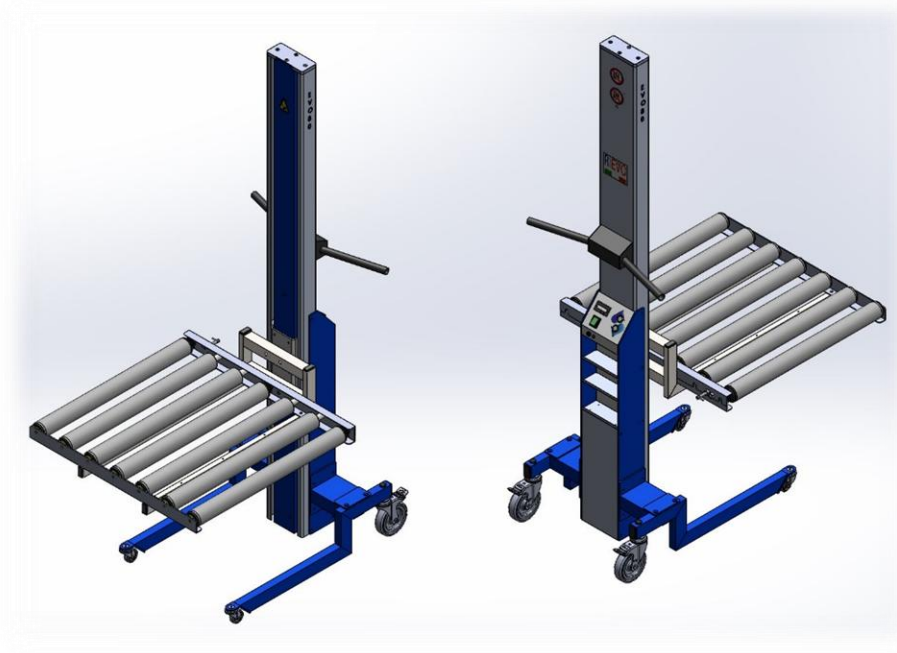
EVO80 LIFTER WITH 2 MOTORIZED LONGITUDINAL ROLLERS



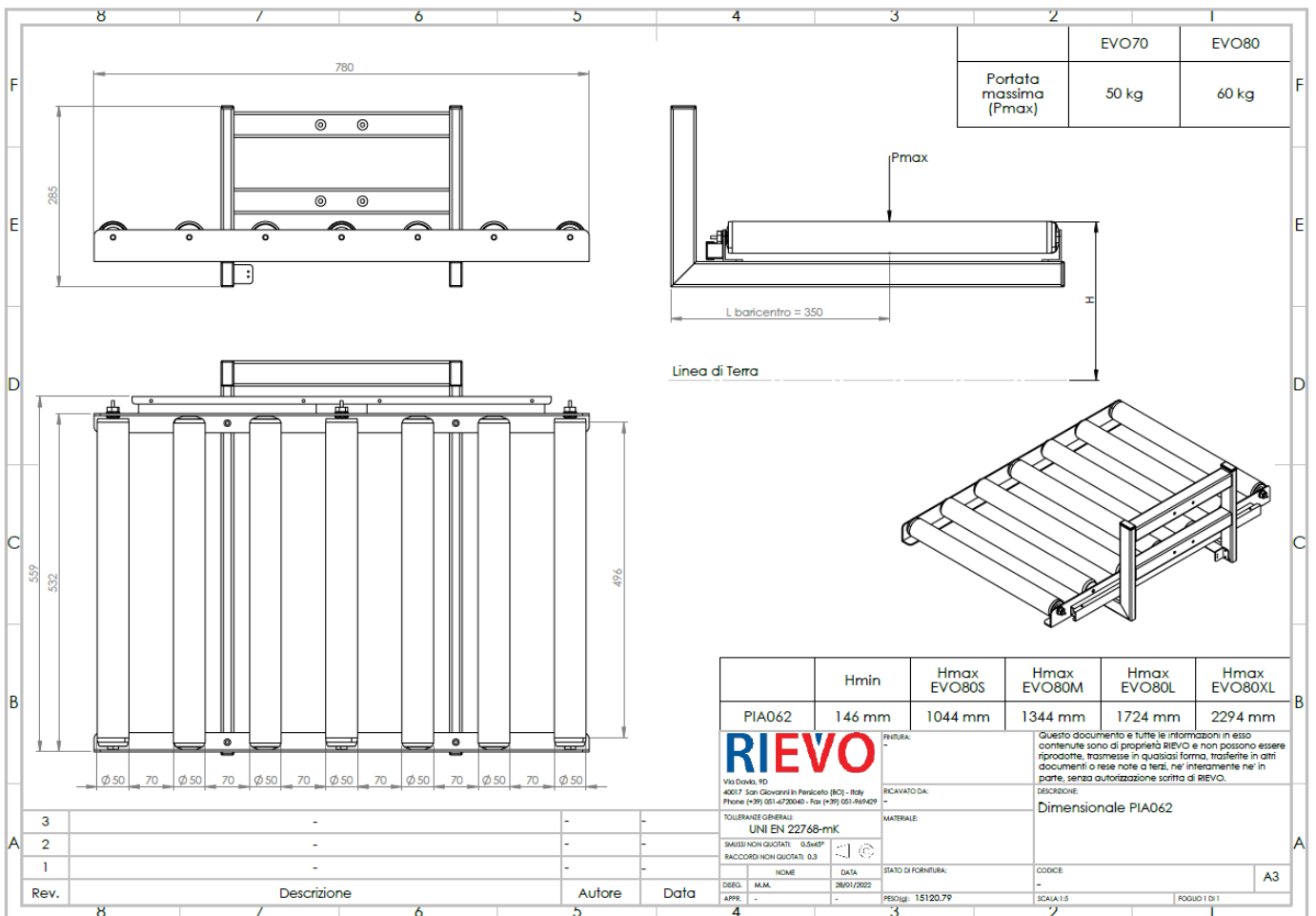
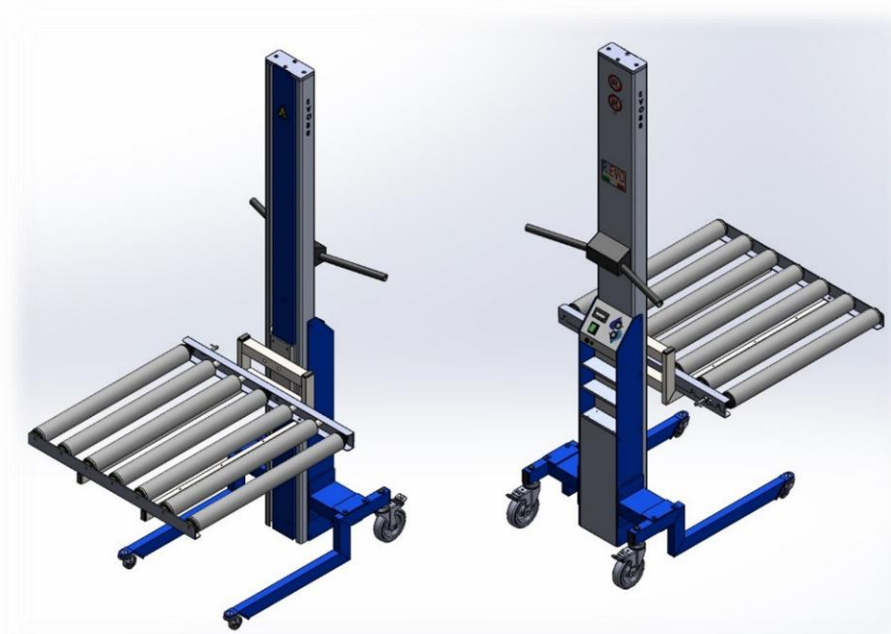
EVO80 LIFTER WITH 3 MOTORIZED LONGITUDINAL ROLLERS



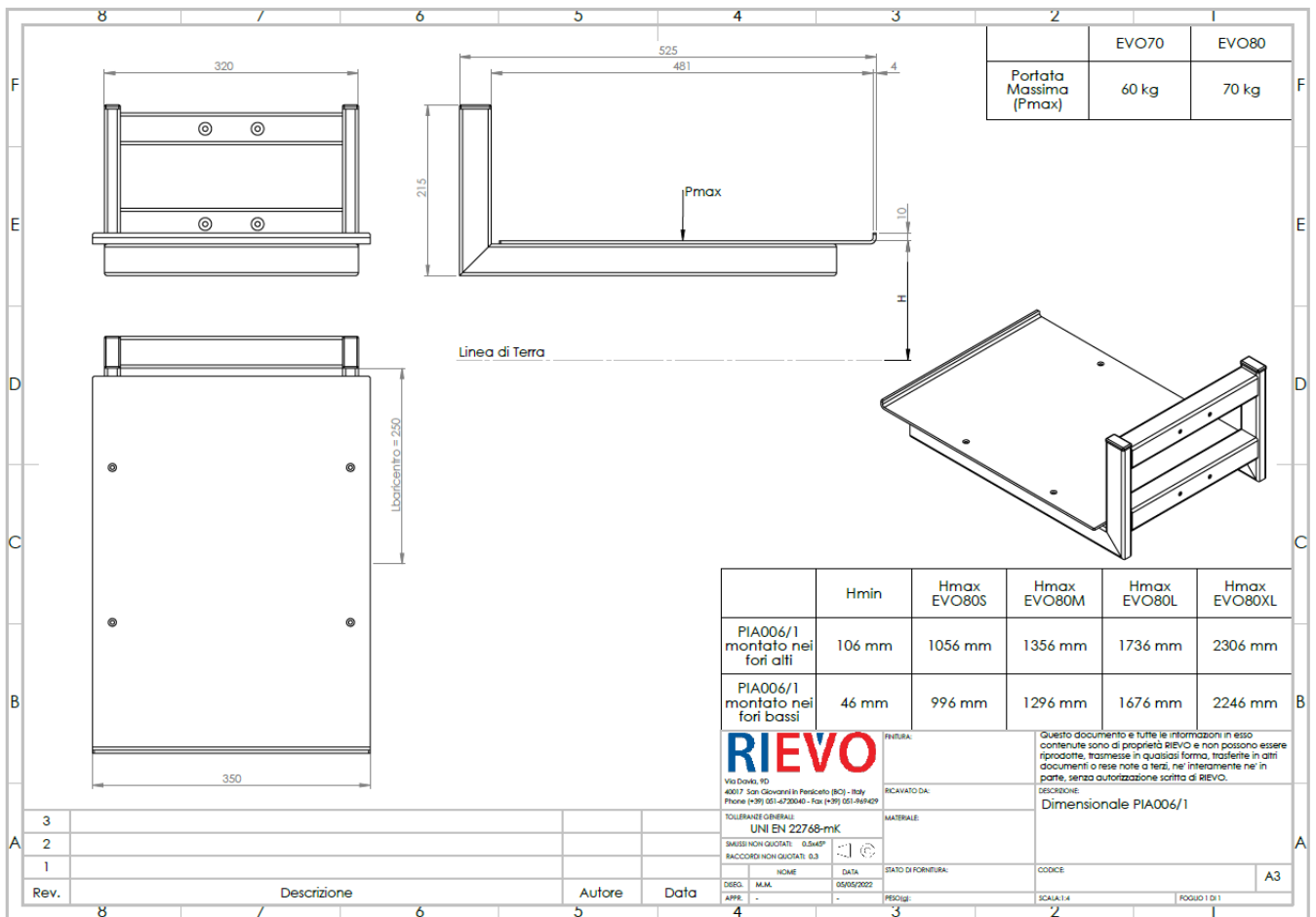
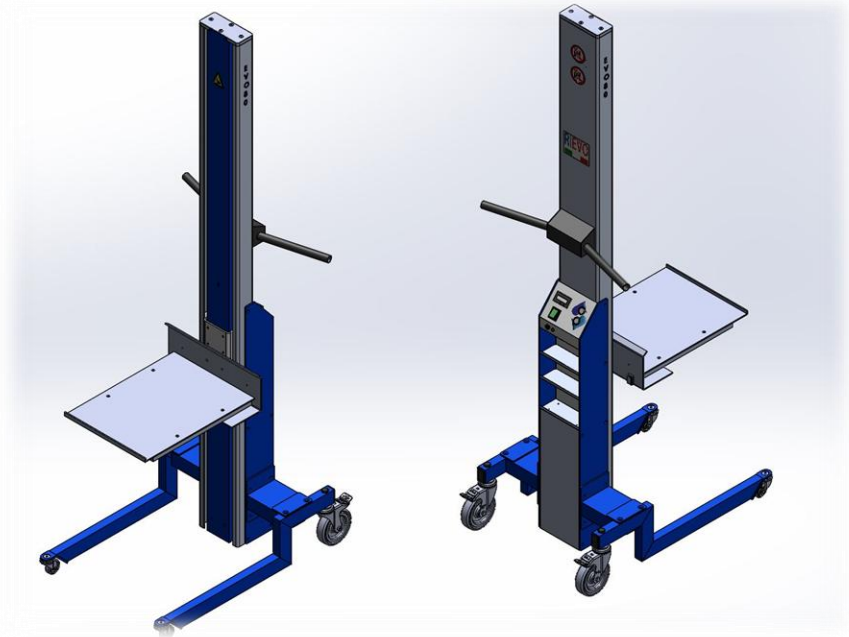
EVO80 LIFTER WITH TRANSVERSAL ROLLERS



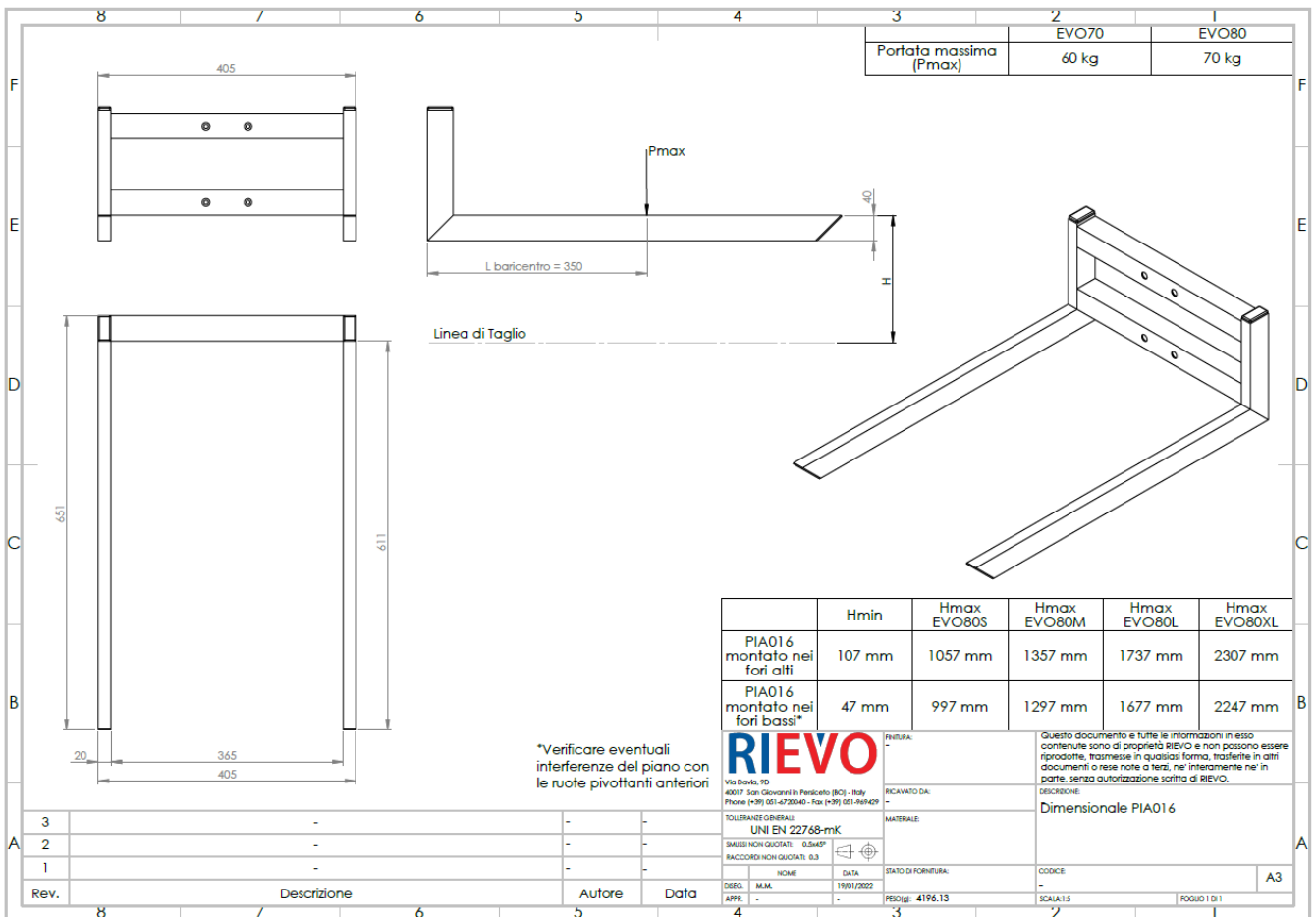
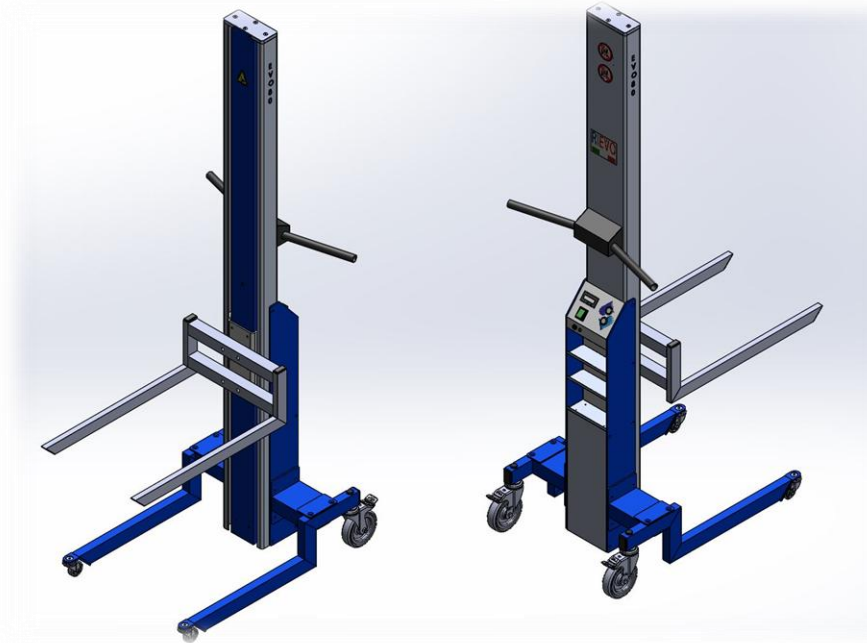
EVO80 LIFTER WITH MOTORIZED TRANSVERSAL ROLLERS



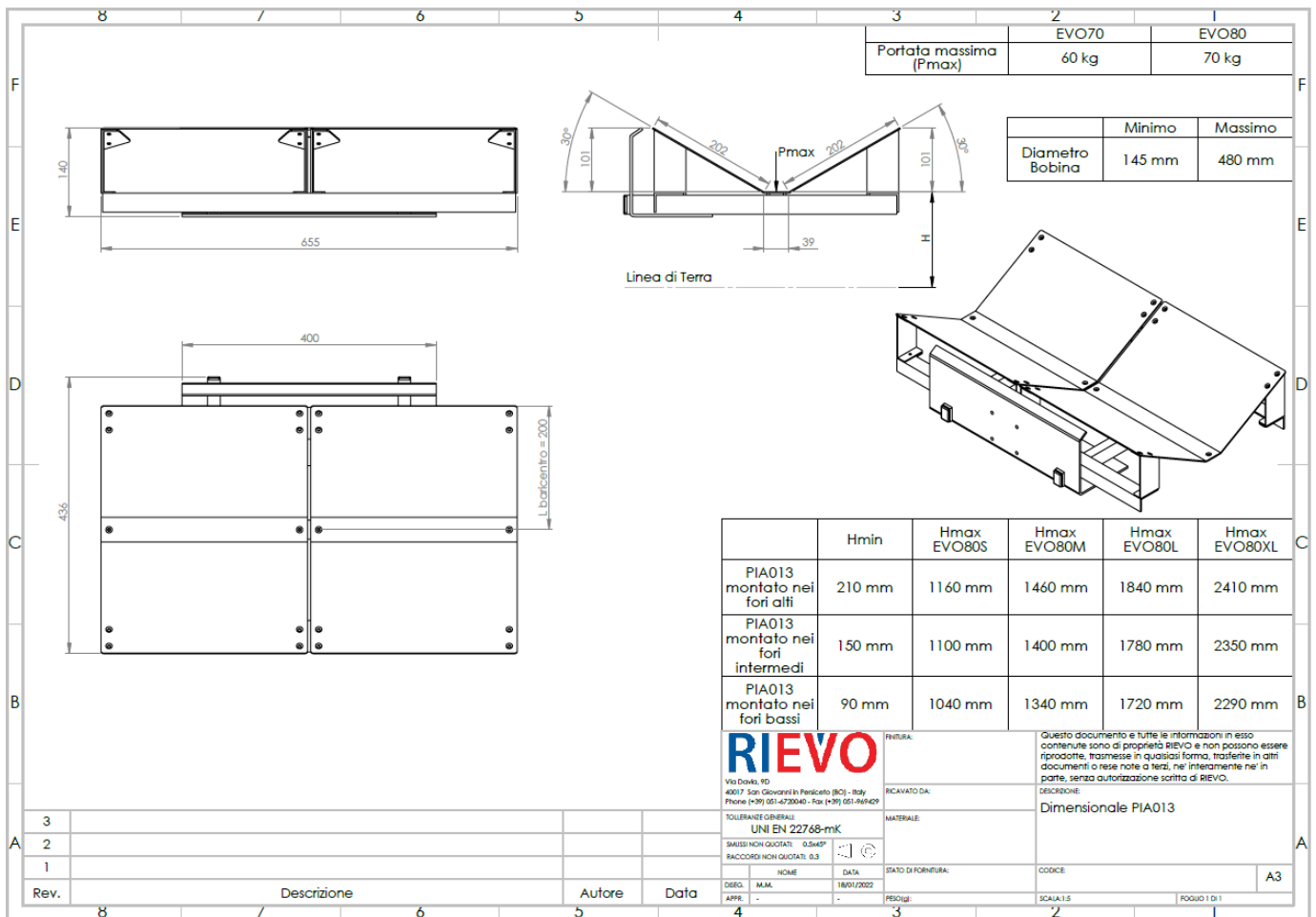
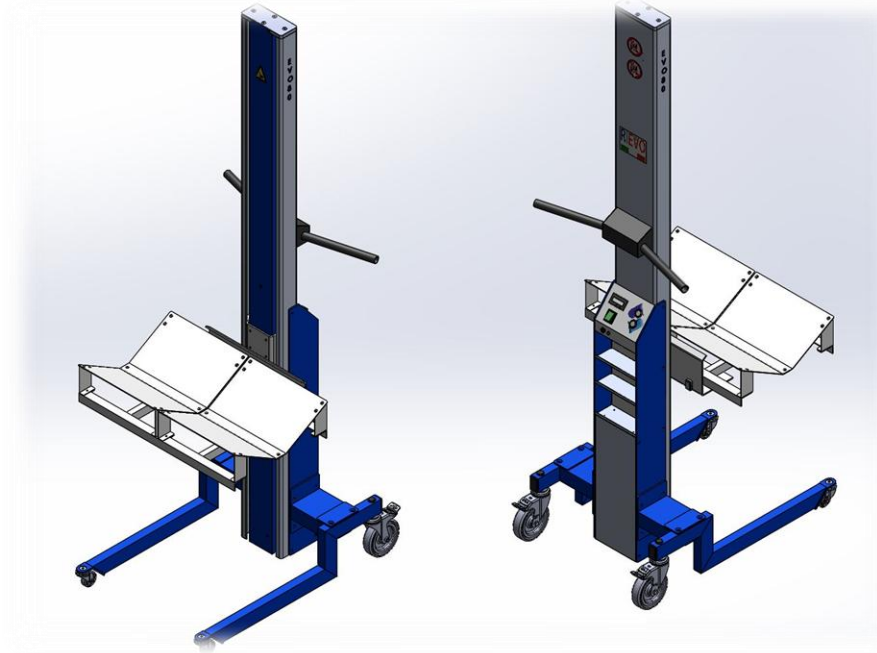
EVO80 LIFTER WITH FORK FOR BOXES



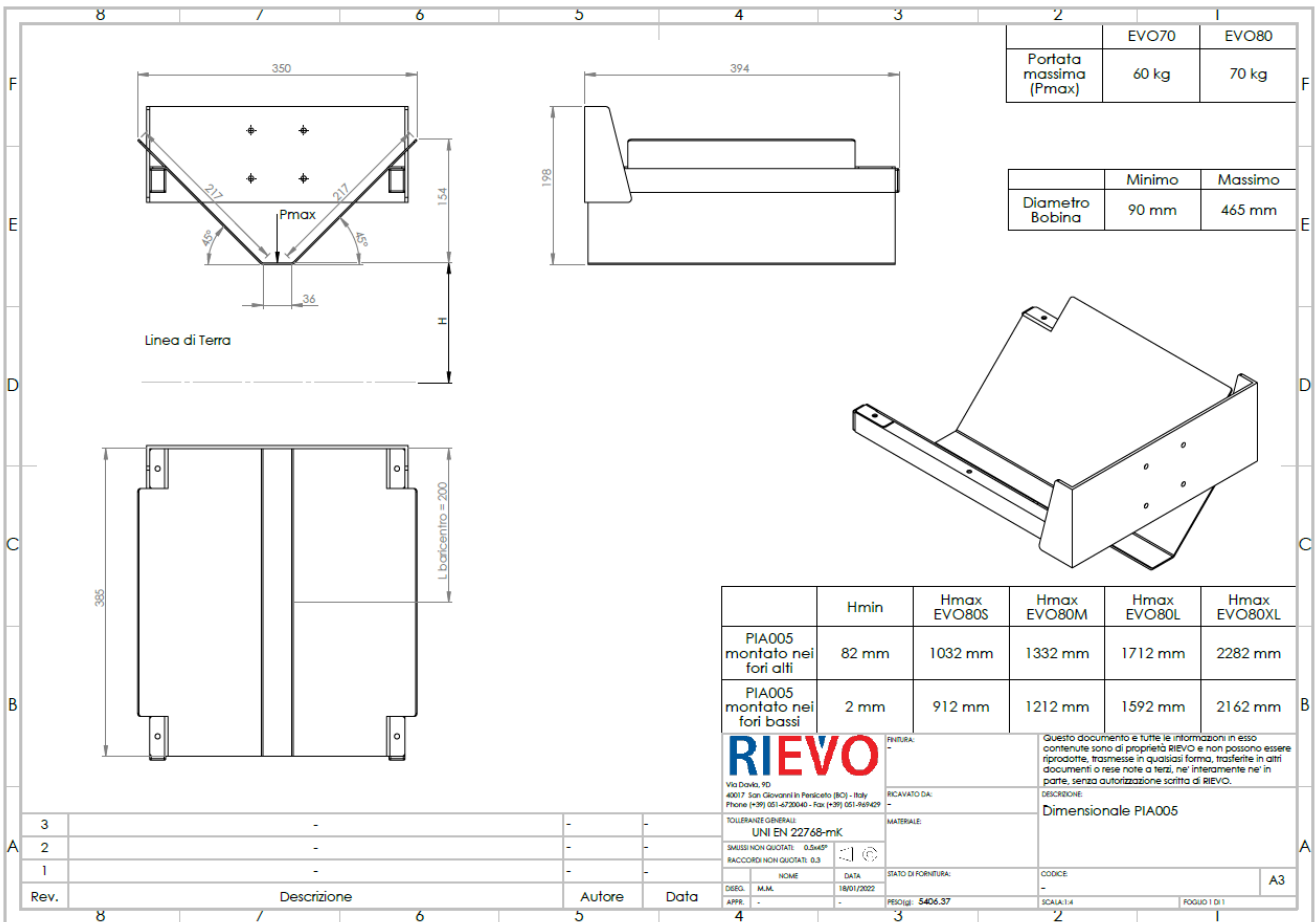
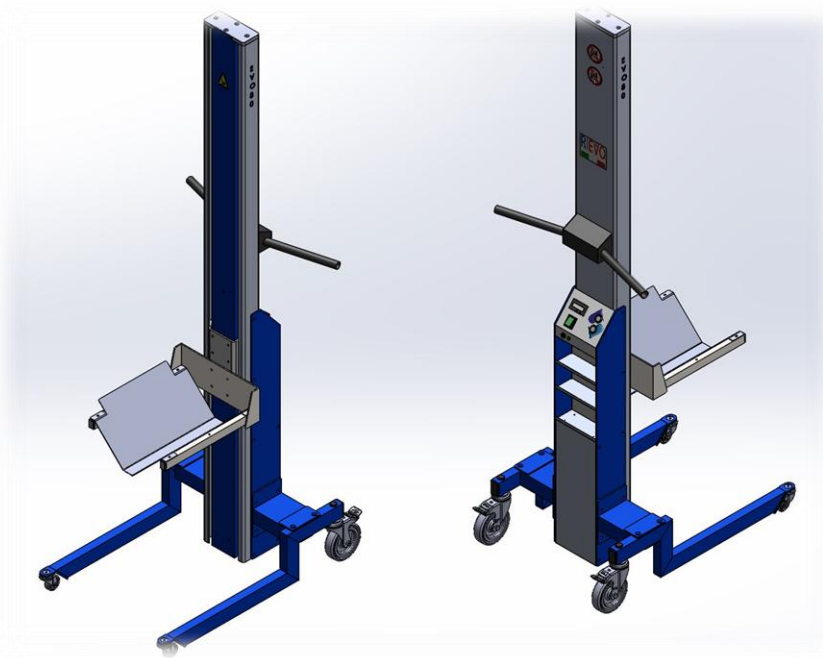
EVO80 LIFTER WITH "HEAVY" FORK



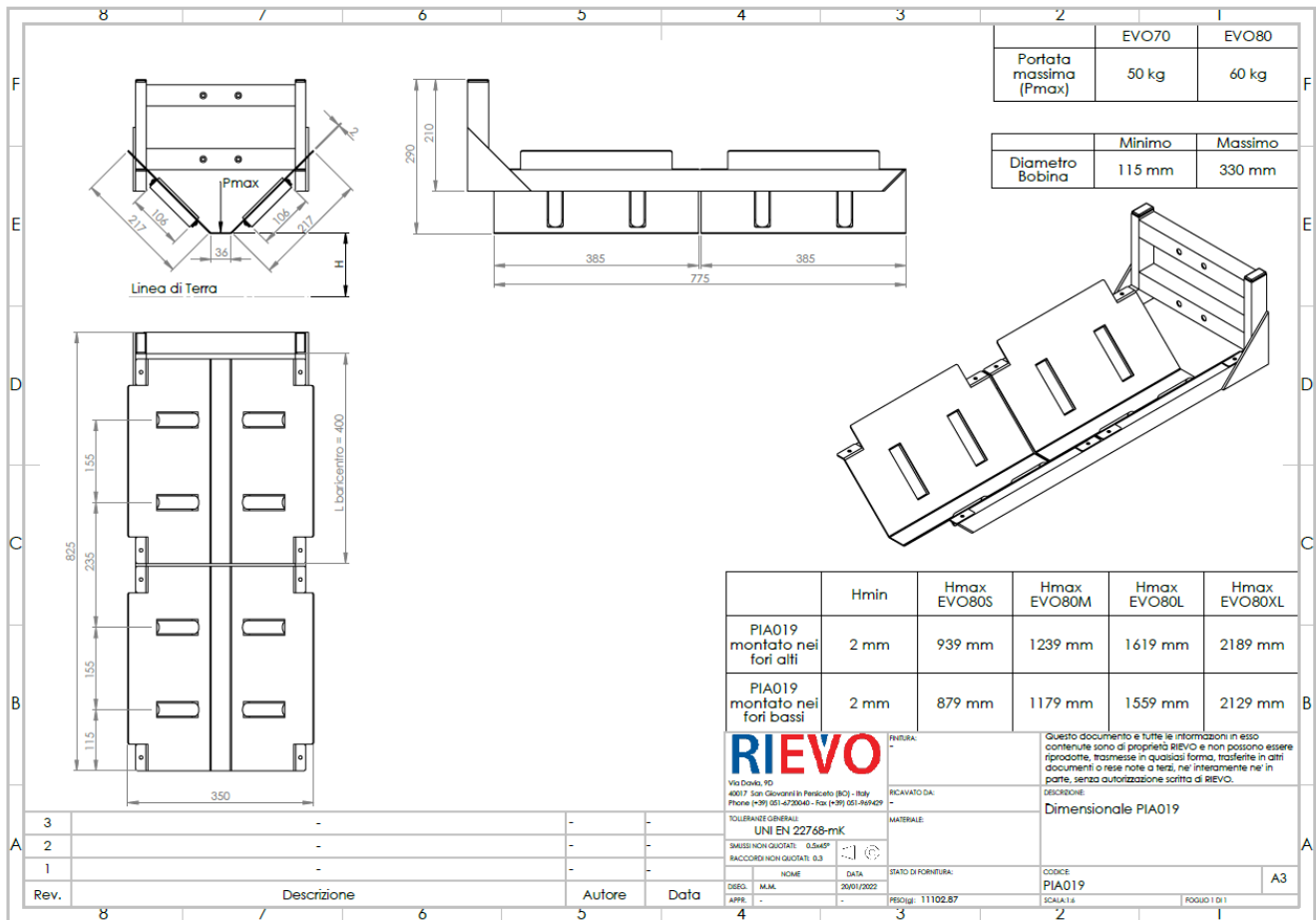
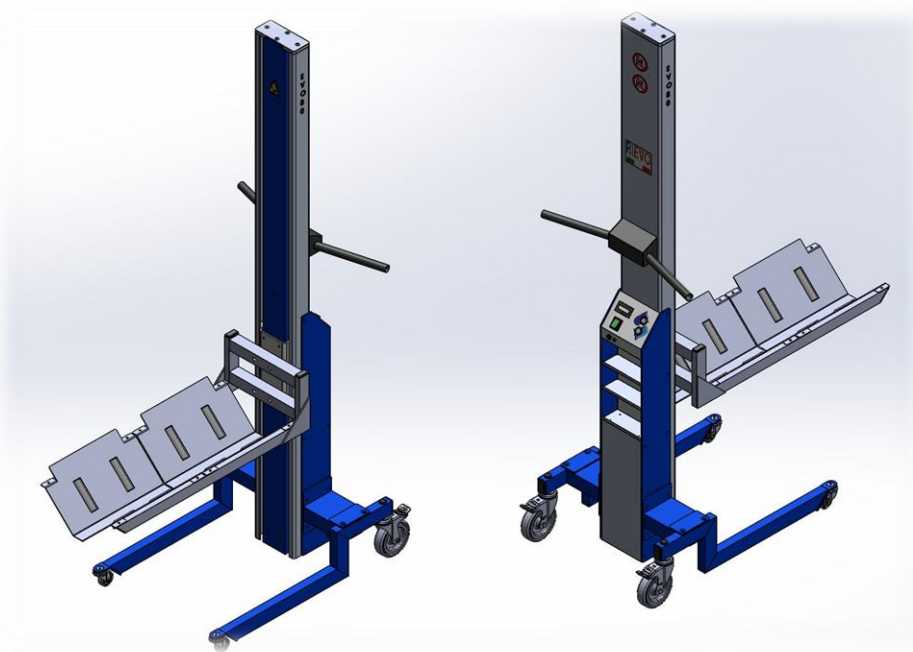
EVO80 LIFTER WITH DOUBLE TRANSVERSAL "V" SHAPED PLAN



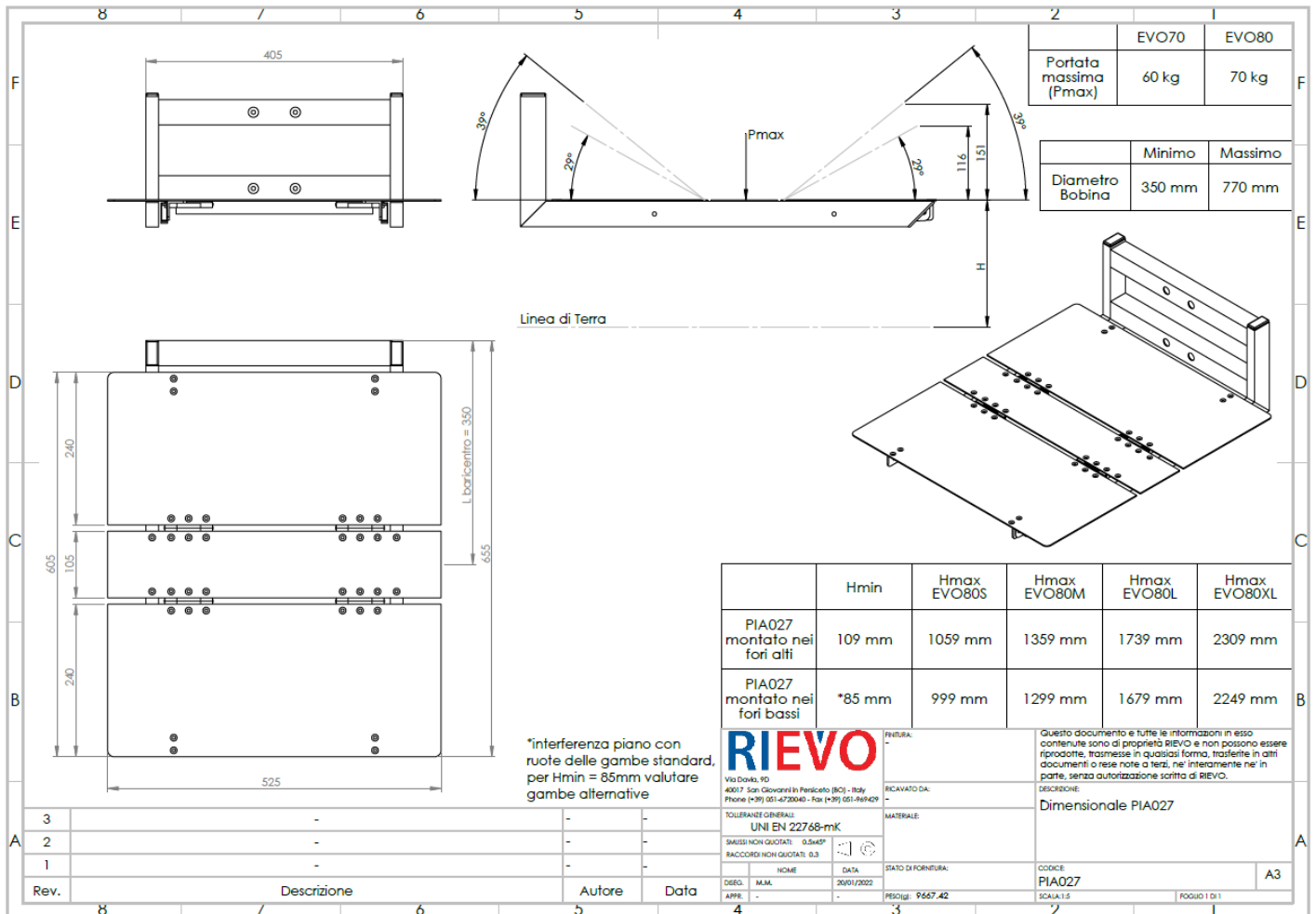
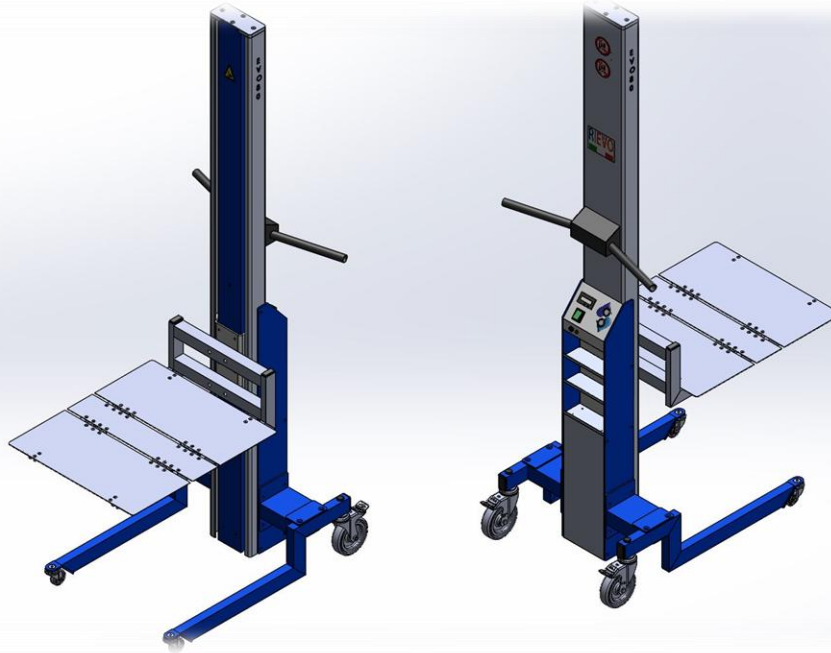
EVO80 LIFTER WITH LONGITUDINAL "V" SHAPED PLAN



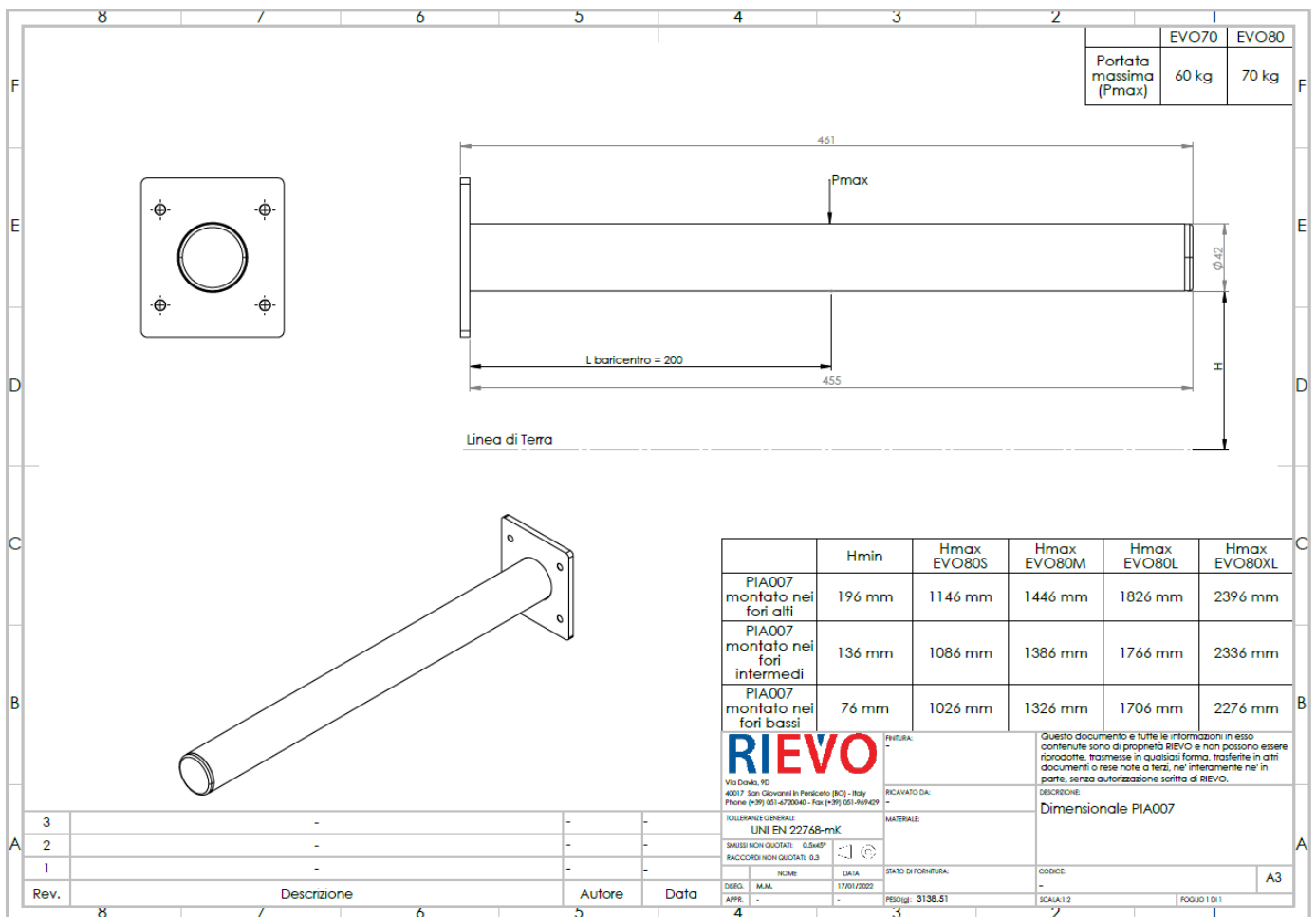
EVO80 LIFTER WITH LONGITUDINAL "V" SHAPED PLAN ANDS ROLLERS



EVO80 LIFTER WITH TRANSVERSAL "V" SHAPED OPENABLE PLAN

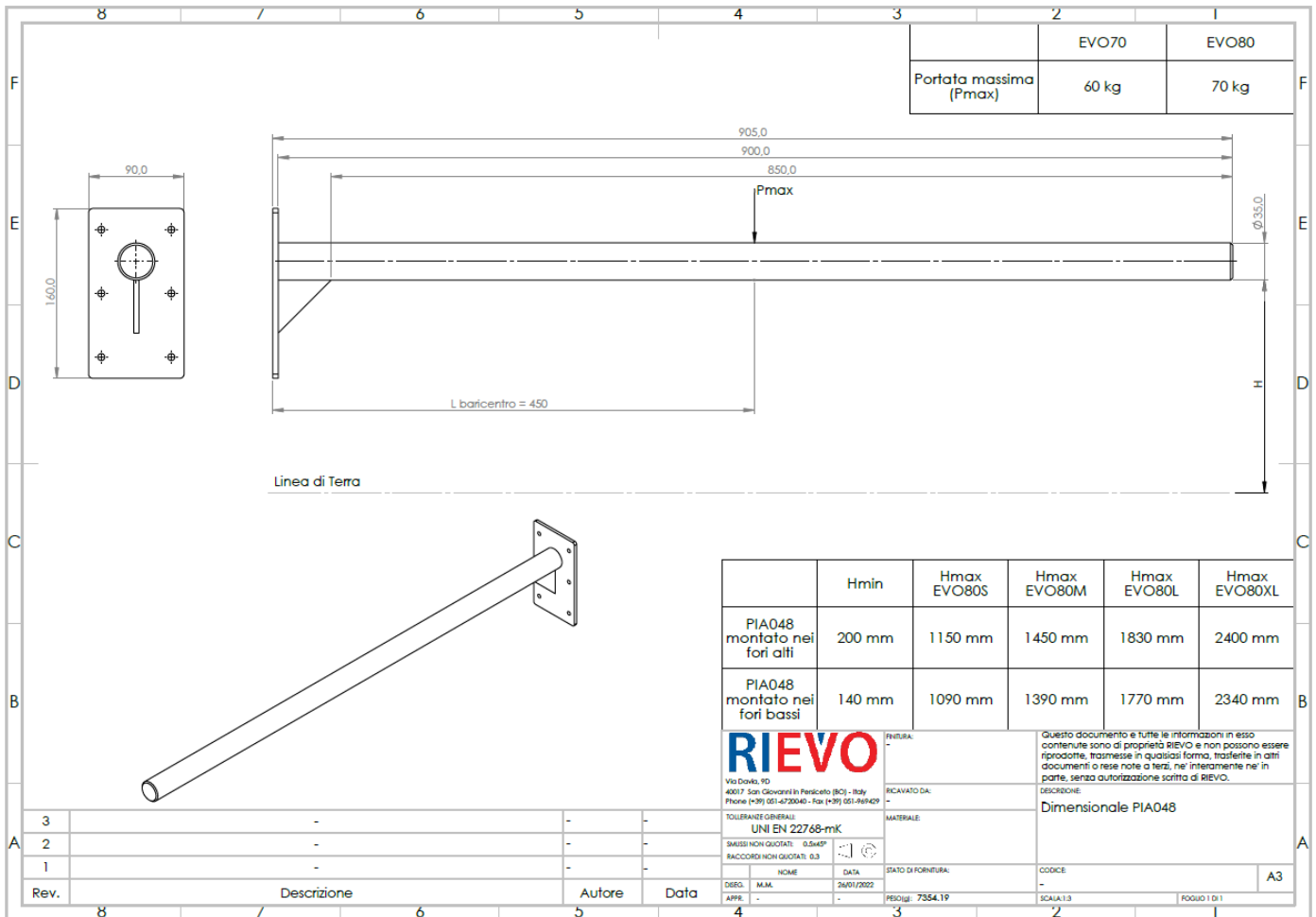
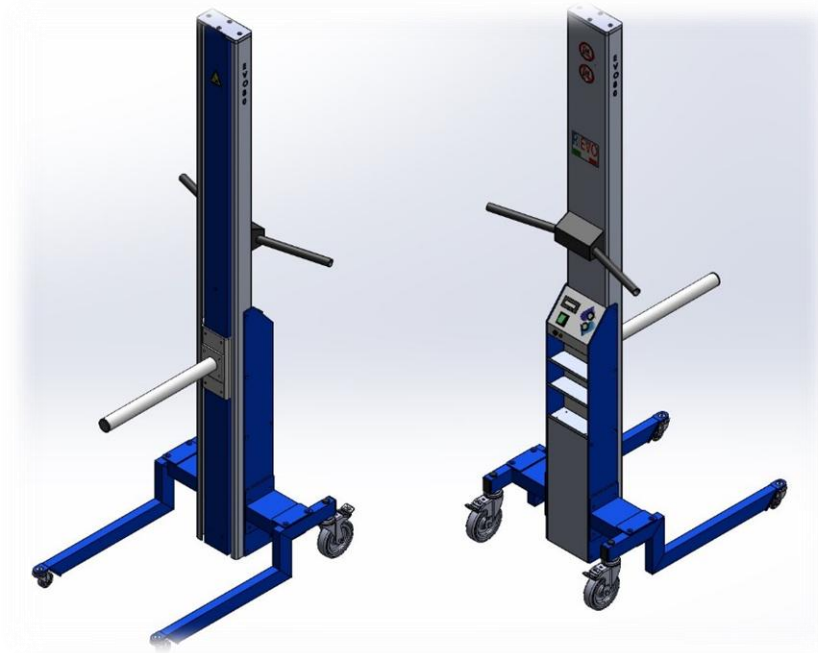


EVO80 LIFTER WITH SPOOL TUBE

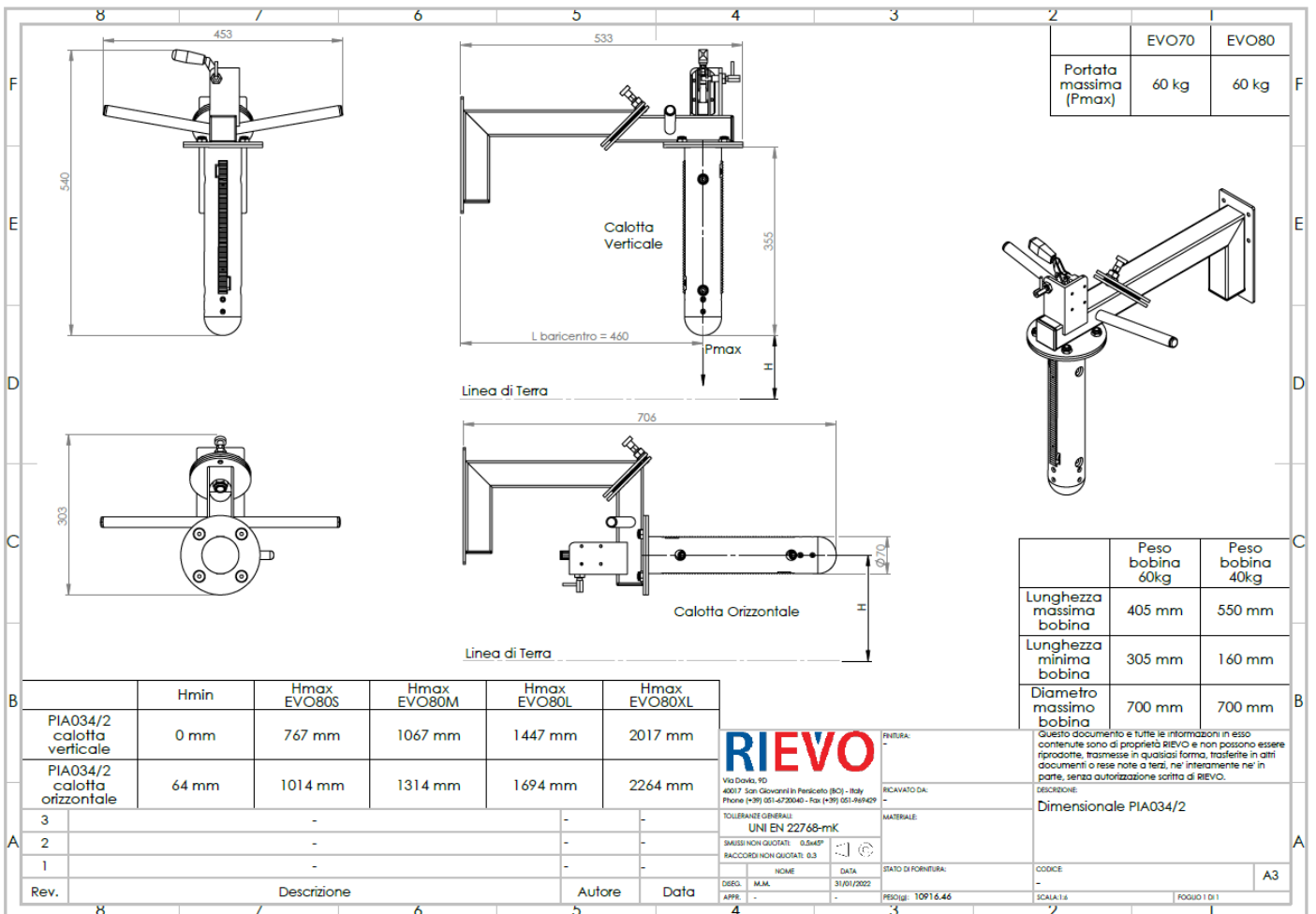
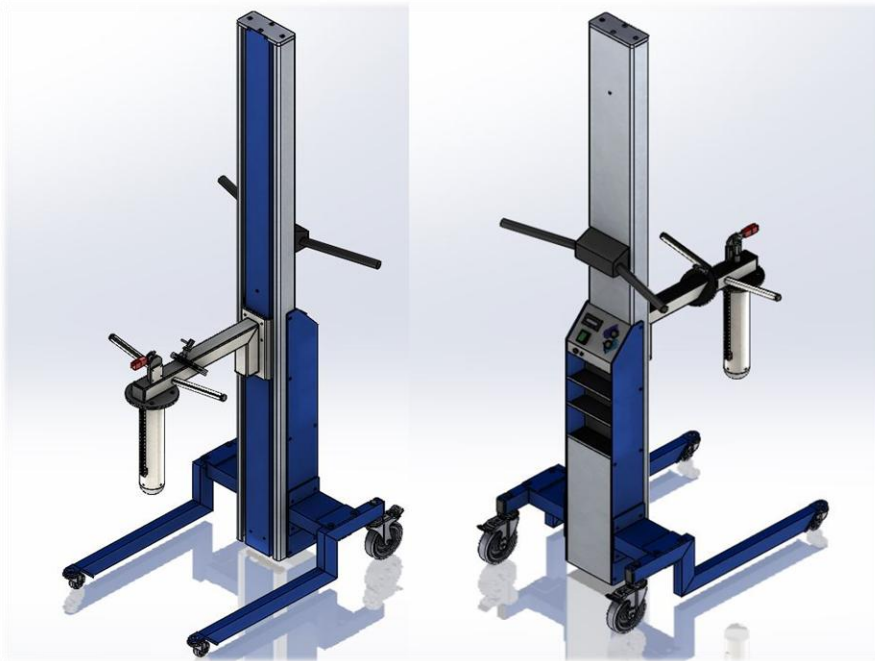


** Available spool tube L= 455 Ø 35 mm

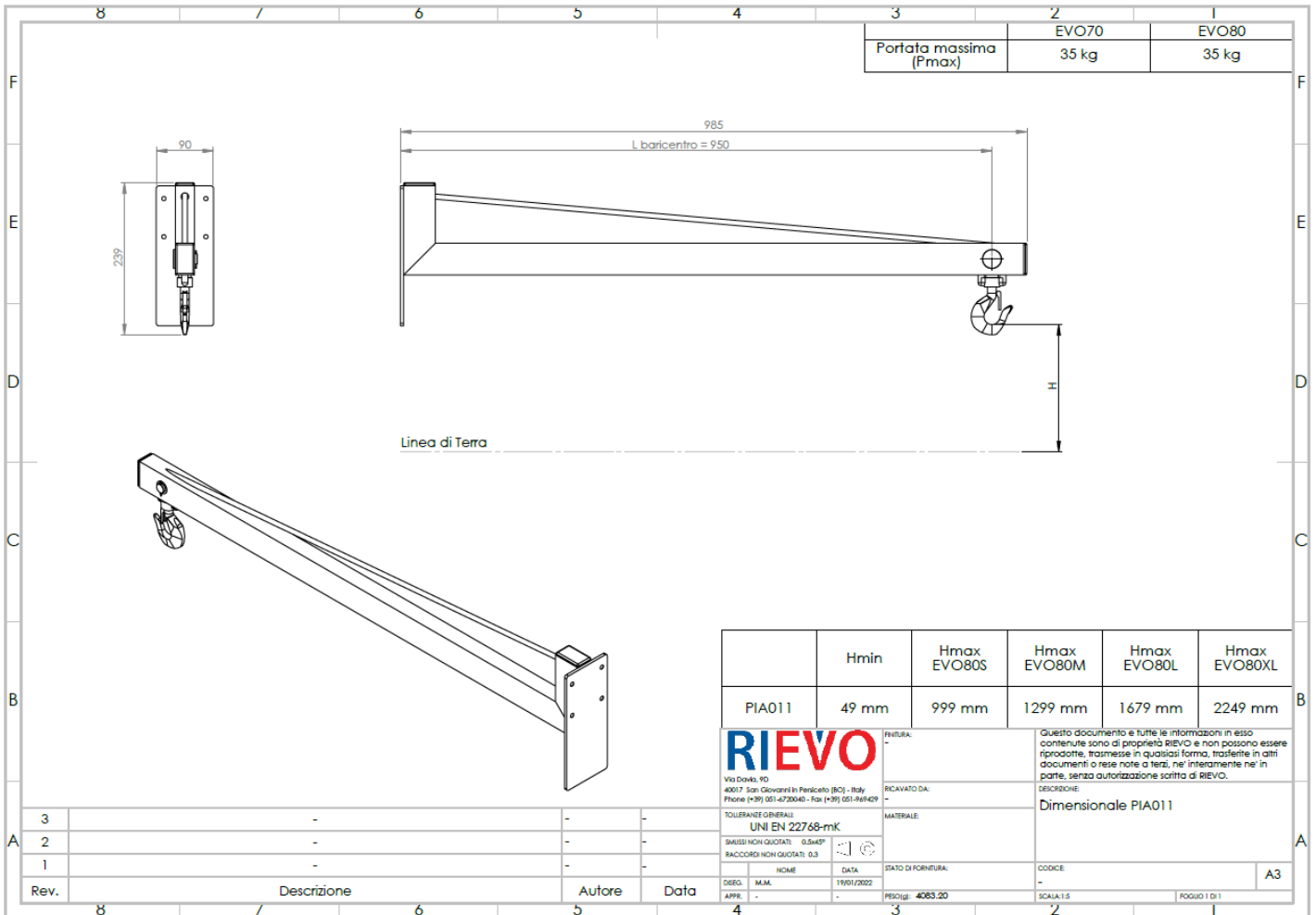
EVO80 LIFTER WITH SPOOL TUBE L 900 MM



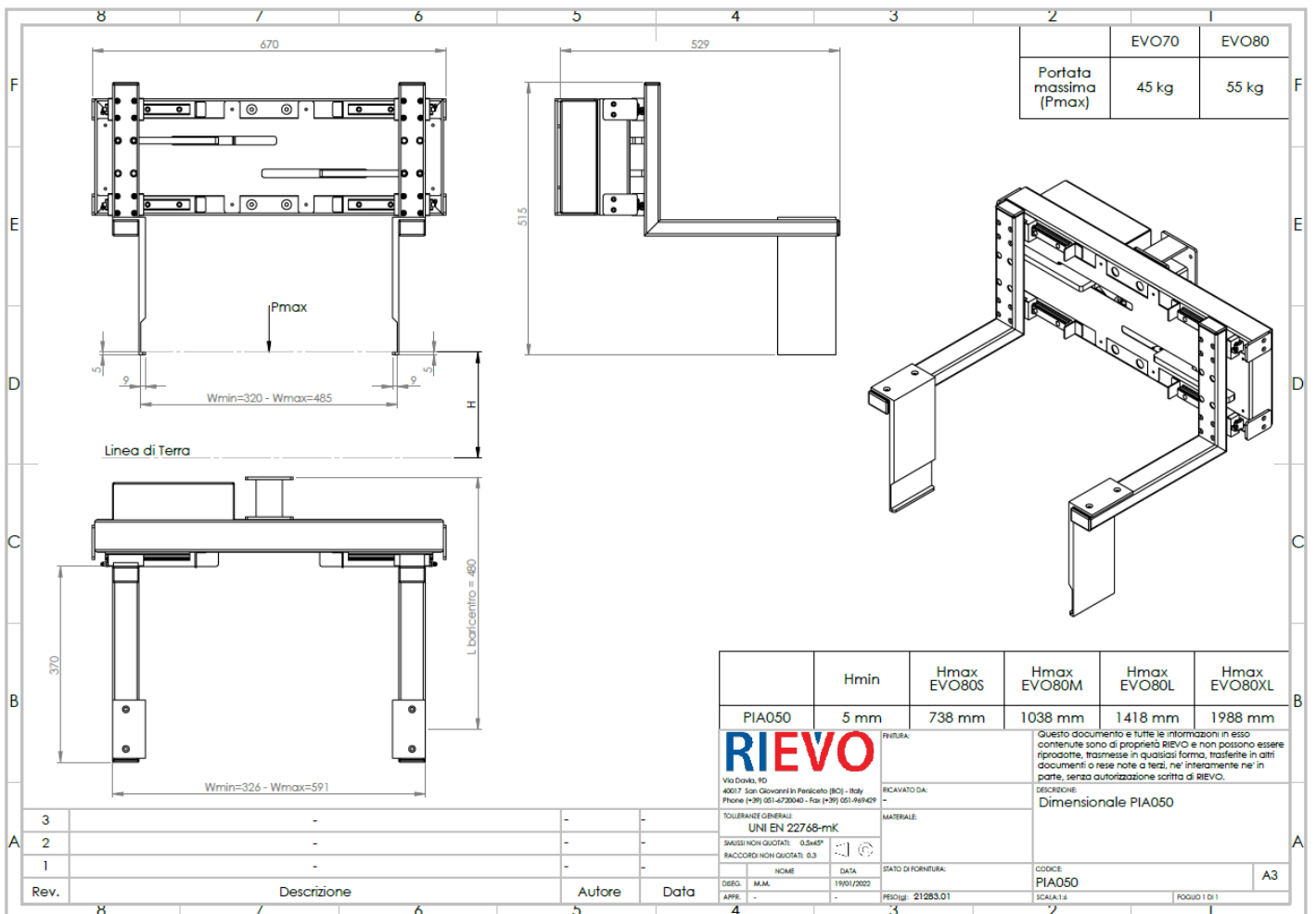
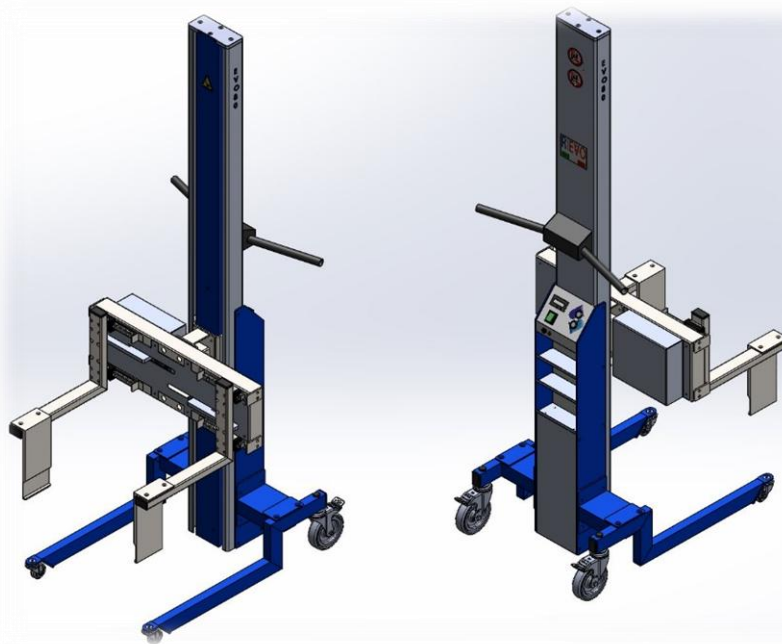
EVO80 WITH REEL TURNER



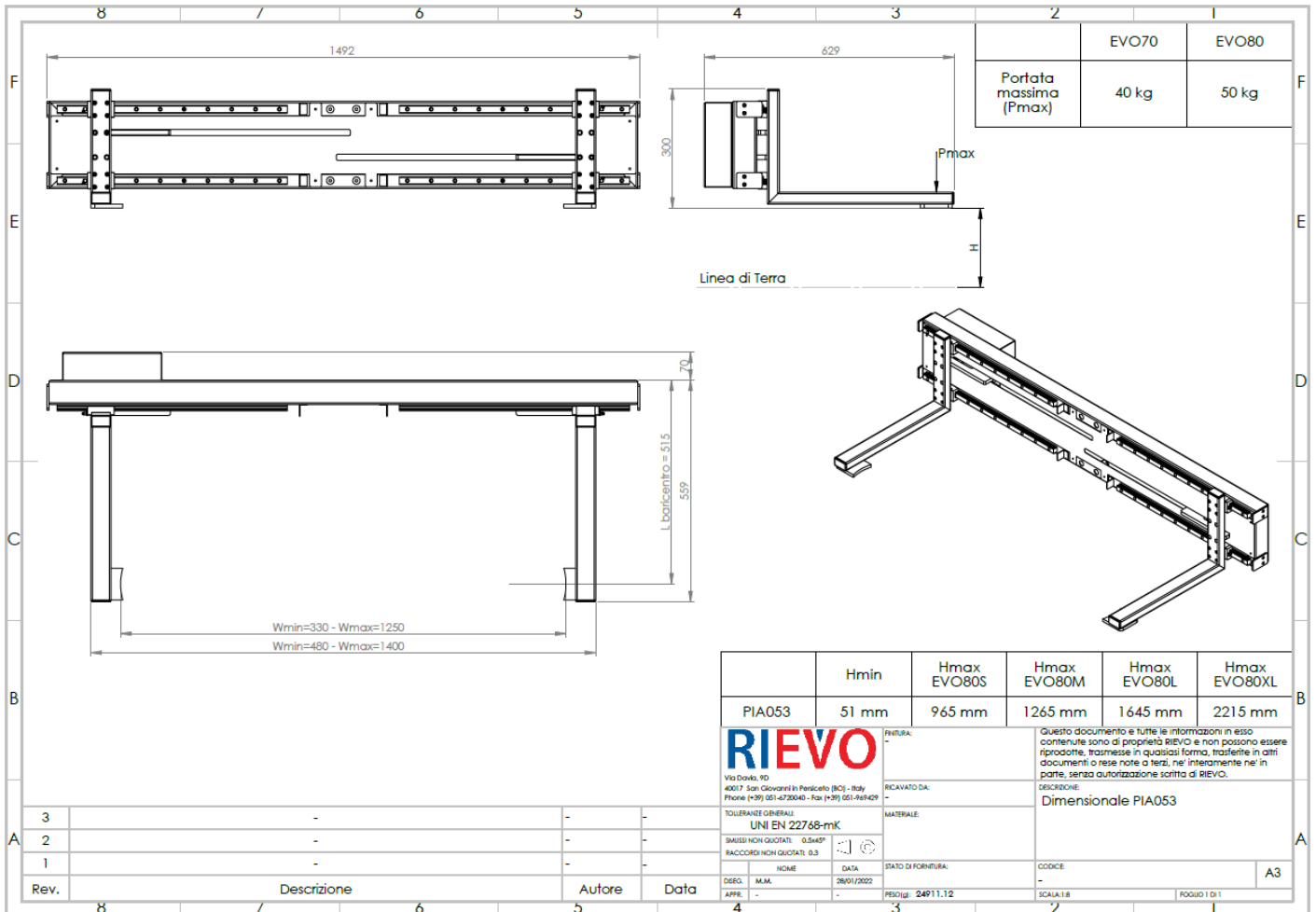
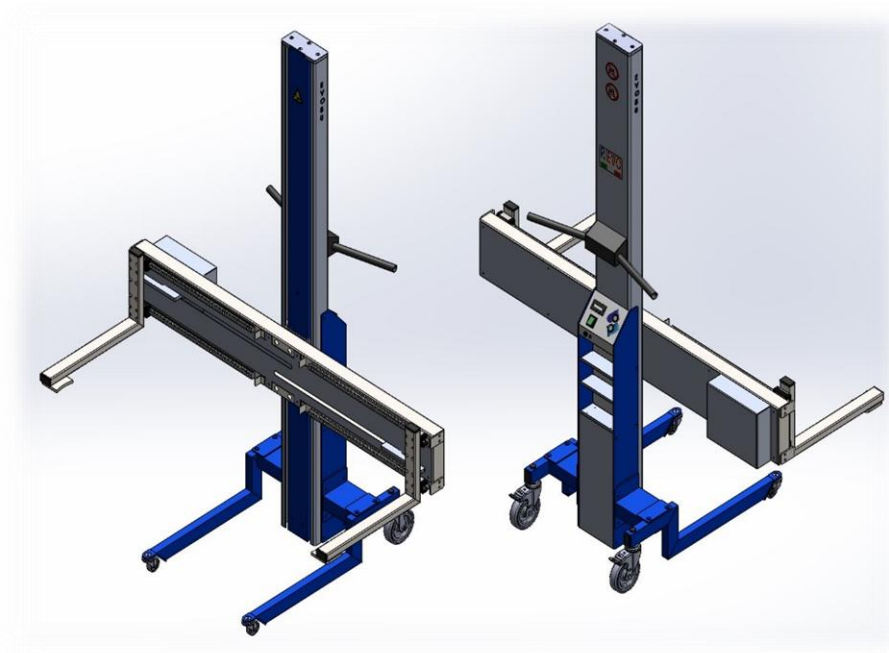
EVO80 WITH L=950 CRANE AND FRONTAL HOOK



EVO80 LIFTER WITH MOTORIZED FORK



EVO80 LIFTER WITH W: 1492 MOTORIZED FORK

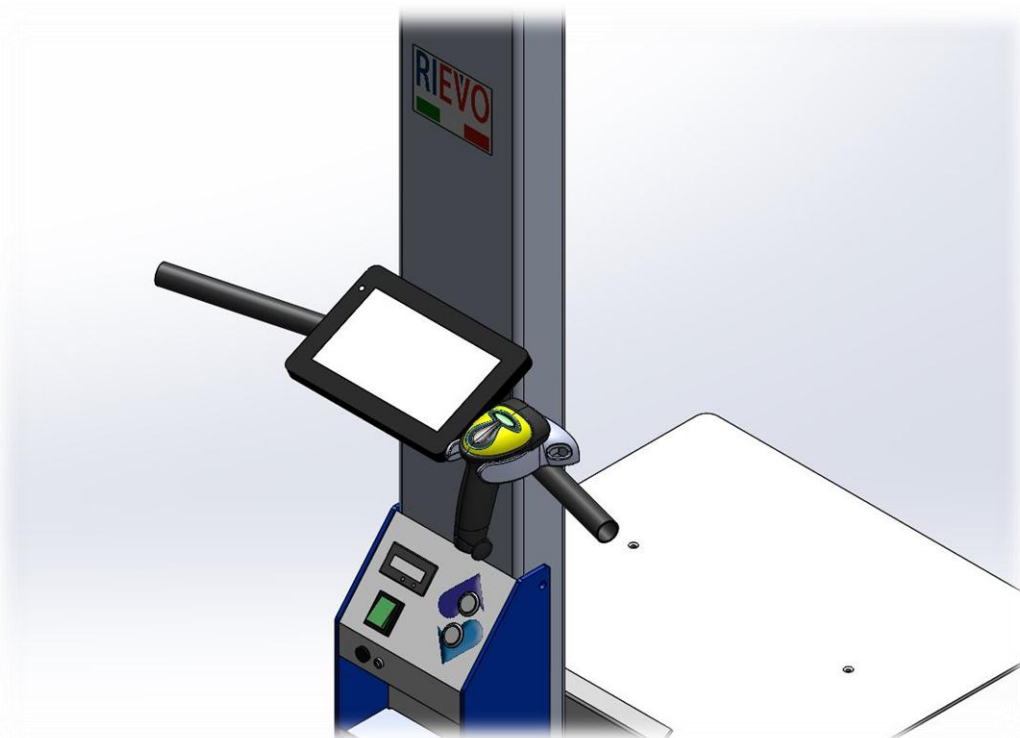


TABLET + BARCODE READER

Our **EVOLIFT** lifters with integrated **QUALIWARE** ERP fall into the category “dispositives for man-machine interaction and betterment of ergonomoy and safety in “4.0” logic workplaces” as “systems for lifting/translating heavy weights or high temperatures objects capable to ease in an intelligent/robotized/interactive manner the task of the operator”.

The purchase of such goods enjoys **tax benefits and incentives** according to the respective national laws.

Throught the Tablet with Barcode reader you will not only dispose of a powerful tool to ease your activity and optimize it according the “digital factory” paradigm, but you will also make it **simpler and faster to manage your documents** and to optimize your information flux management.



- Tablet brand and model: Caterpillar T20
- Display: IPS LCD 8" 800 x 1280 IPS in Gorilla Glass
- Memory space: 64GB
- RAM: 2GB
- OS: Windows 10 Home
- Battery: 7500 mAh
- Protection degree: IP67 + resistance to falls from heights up to 1.8m
- Barcode Reader: able to read 1D barcodes, wireless connection with USB 2.4GHz wireless adapter and cable.



CONTACT

Registered Office

Stefal S.r.l.

Via Luigi Davia, 9D

40017 San Giovanni in Persiceto (BO)

Operative headquarters

Divisione Rievo

Via Luigi Davia, 5

40017 San Giovanni in Persiceto (BO)

C.F. 01239530379 - P.IVA 00540721206

Tel. (+39) 051- 6871609 | sales@rievo.it

VISIT OUR WEB SITE:

www.rievo.it | www.stefal-cablaggi.it

FOLLOW US:

[YOUTUBE](#)

[LINKEDIN](#)