



RIEVO

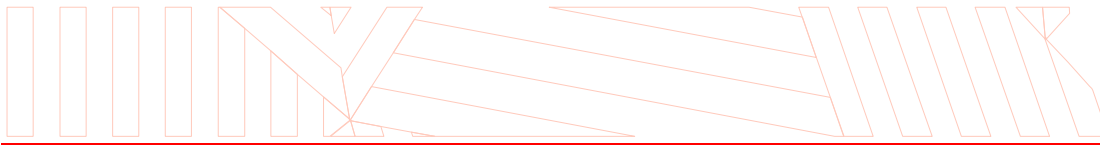
WE LIFT YOUR WORK



EVO200

YEAR 2022

RIEVO divisione R & D di Stefal S.r.l. | Via L. Davia, 5 40017 San Giovanni in Persiceto (BO) – Italia
www.rievo.it | sales@rievo.it



THE COMPANY



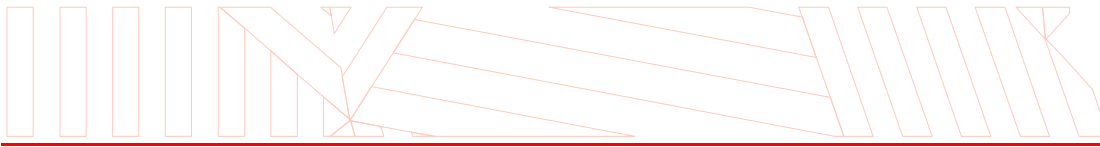
Rievo is the **R&D department** of Stefal Srl. We develop, design and produce platform for lifting and transport of light industrial loads.

Research and development, design, **production**, are all made in Italy, in San Giovanni in Persiceto (Bologna). 80% of the raw materials we employ is of European origin.

An organized production line and our stock allow us to be extremely ready and flexible to satisfy our customers' requests with particular regard to the **supply speed**.

We supply our customers with **assistance** and **maintenance** services in order to personally manage any eventual problem and to provide a timely intervention in order to minimize the inconveniences.





EVOLIFT LINE

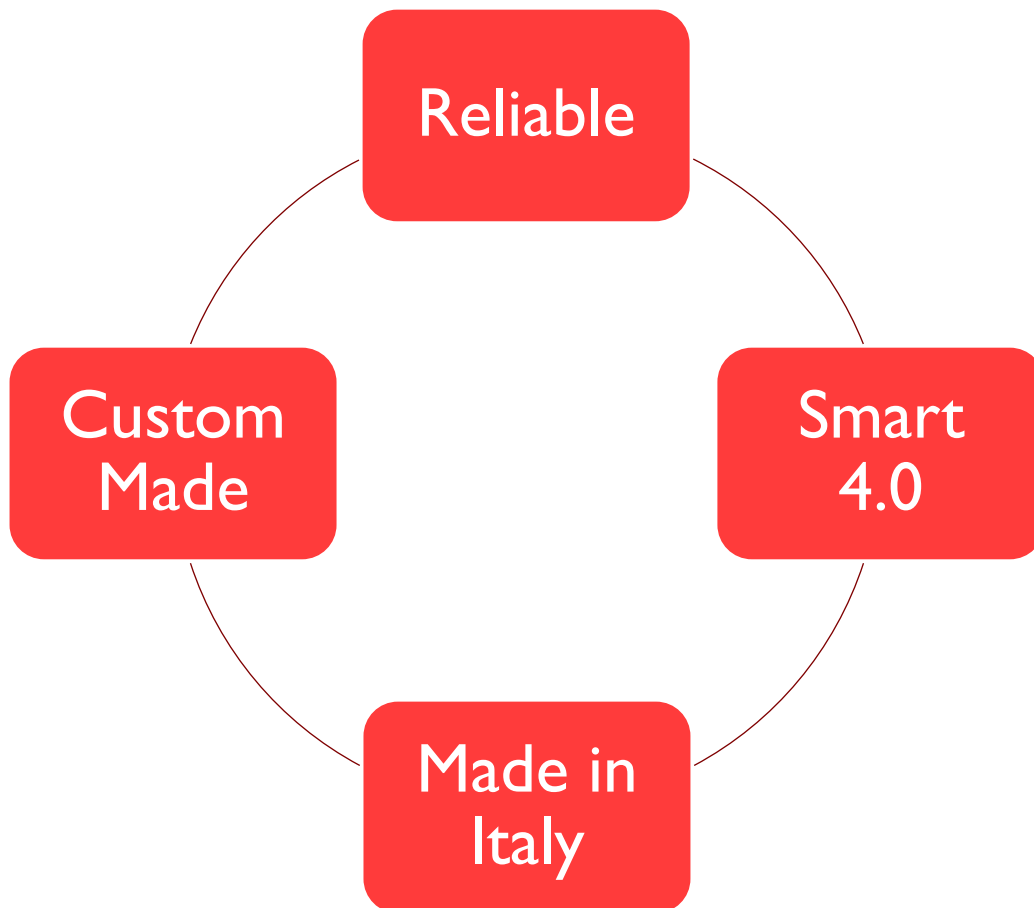
REGULATIONS

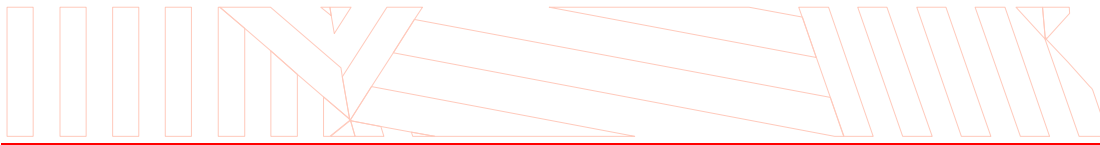
Our lifters satisfy all CE regulations and are furnished of CE label.

WARRANTY

Our products are covered by a 12 months warranty starting from the delivery date.

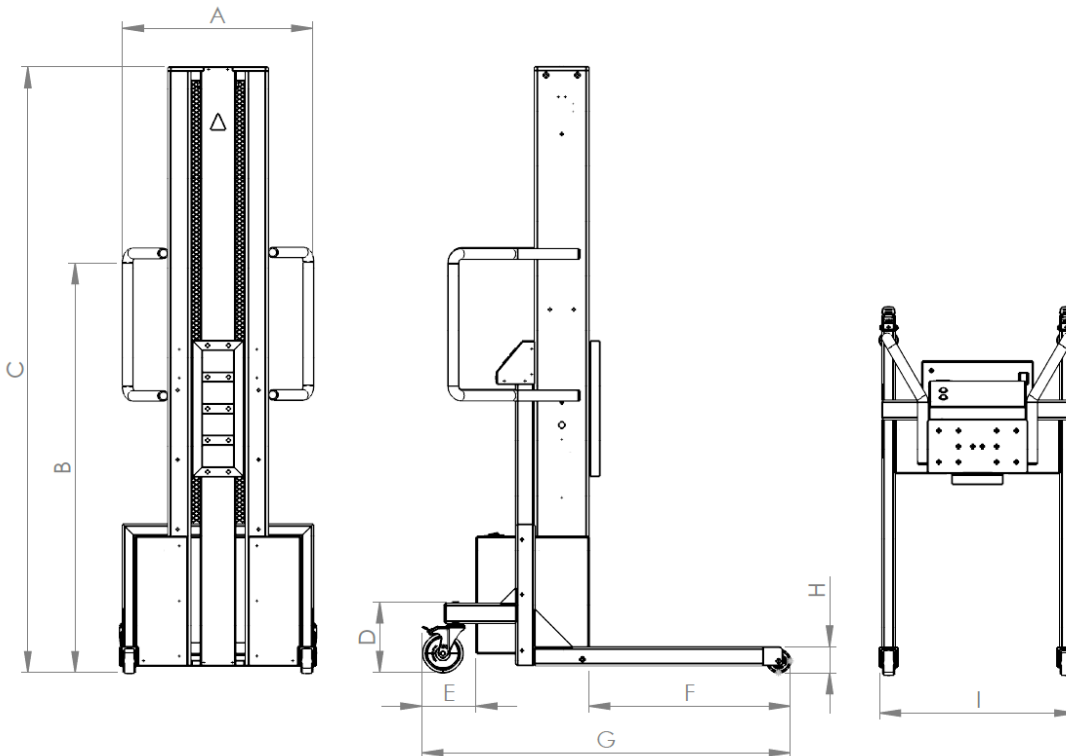
OUR STRONG POINTS



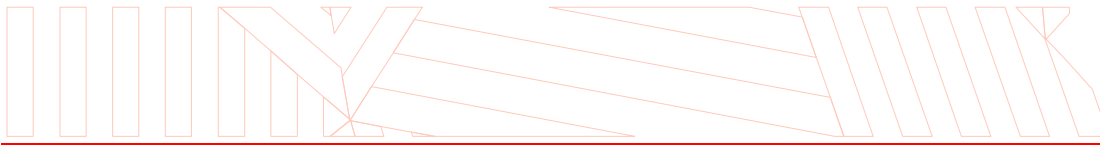


TECHNICAL DATA

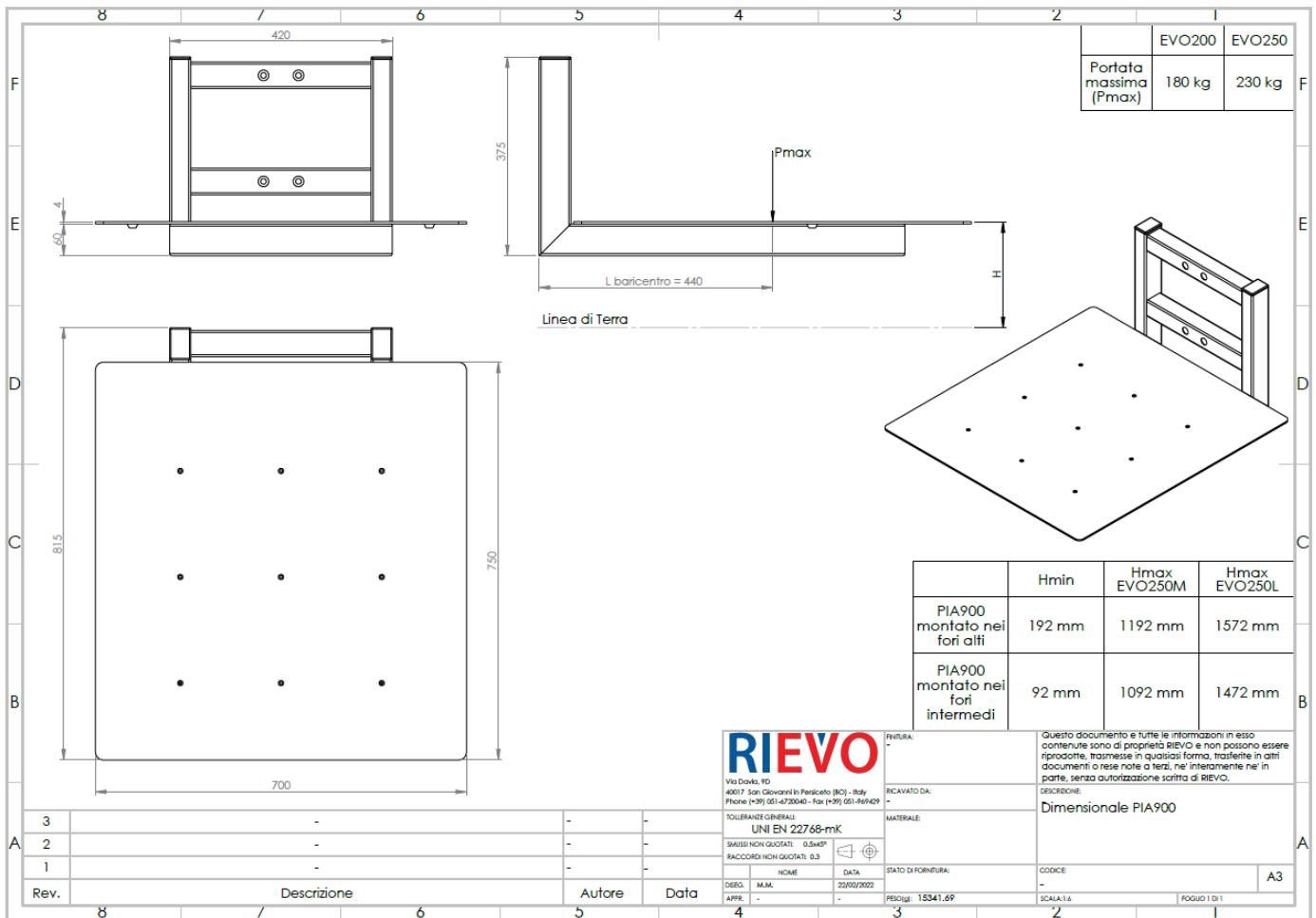
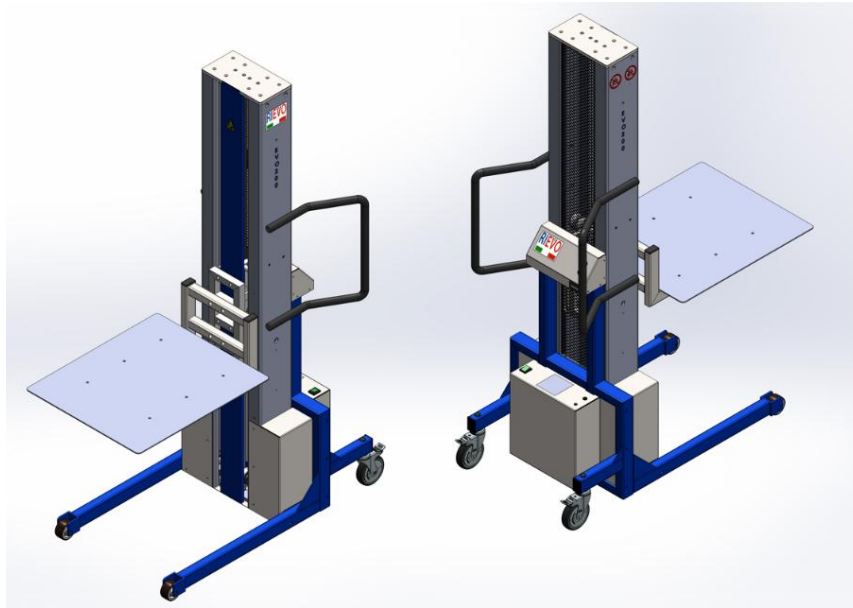
- Maximum capacity: 200 Kg
- Aluminum and steel structure to guarantee strength, lightness and an easy handling
- Weight of the truck, without accessories, from 112 Kg approx. to 117 kg approx.
- Powered lift and descent movement (speed 75mm/s) with rubber toothed belt and steel strands
- Anti-crushing safety dispositive operative during the descent movement in all models
- 24V power supply (2 12V 40Ah batteries)
- LCD display with battery charge status, voltage and charge percent indicator
- “Soft-start” enhanced electronic system with acceleration ramp operative during the lift and descent movement of the lifting dispositive in order to allow a better positioning precision
- Lowered front spars in order to facilitate insertion under pallets or similar
- Pivoting front and rear wheels equipped with bearings in order to guarantee better handling smoothness and easiness
- Blocking dispositive on the rear wheels
- Energy recovery system during downwards movement
- At least 100 up- and downwards cycles autonomy with maximum load
- Complete charge in 10 hours with supplied charger
- Absence of oil, grease in internal mechanisms
- Absence of Teflon components
- Integrated safety fusible for system protection in case of malfunctions, accessible from outside
- Accompanying kit: use and maintenance manual, CE certificate, list of checking tests, external 220 V charger

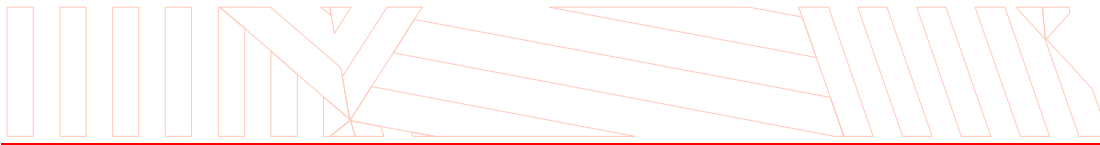


| Product code: | Dimensions mm | | | | | | | | | Weight Kg | Lifting height mm |
|---------------|---------------|------|------|-----|-----|-----|------|----|-----|-----------|-------------------|
| | A | B | C | D | E | F | G | H | I | | |
| EVO200 L | 600 | 1295 | 1915 | 223 | 171 | 636 | 1162 | 83 | 618 | 117 | 1420 |
| EVO200M | 600 | 1295 | 1535 | 223 | 171 | 636 | 1162 | 83 | 618 | 112 | 1040 |

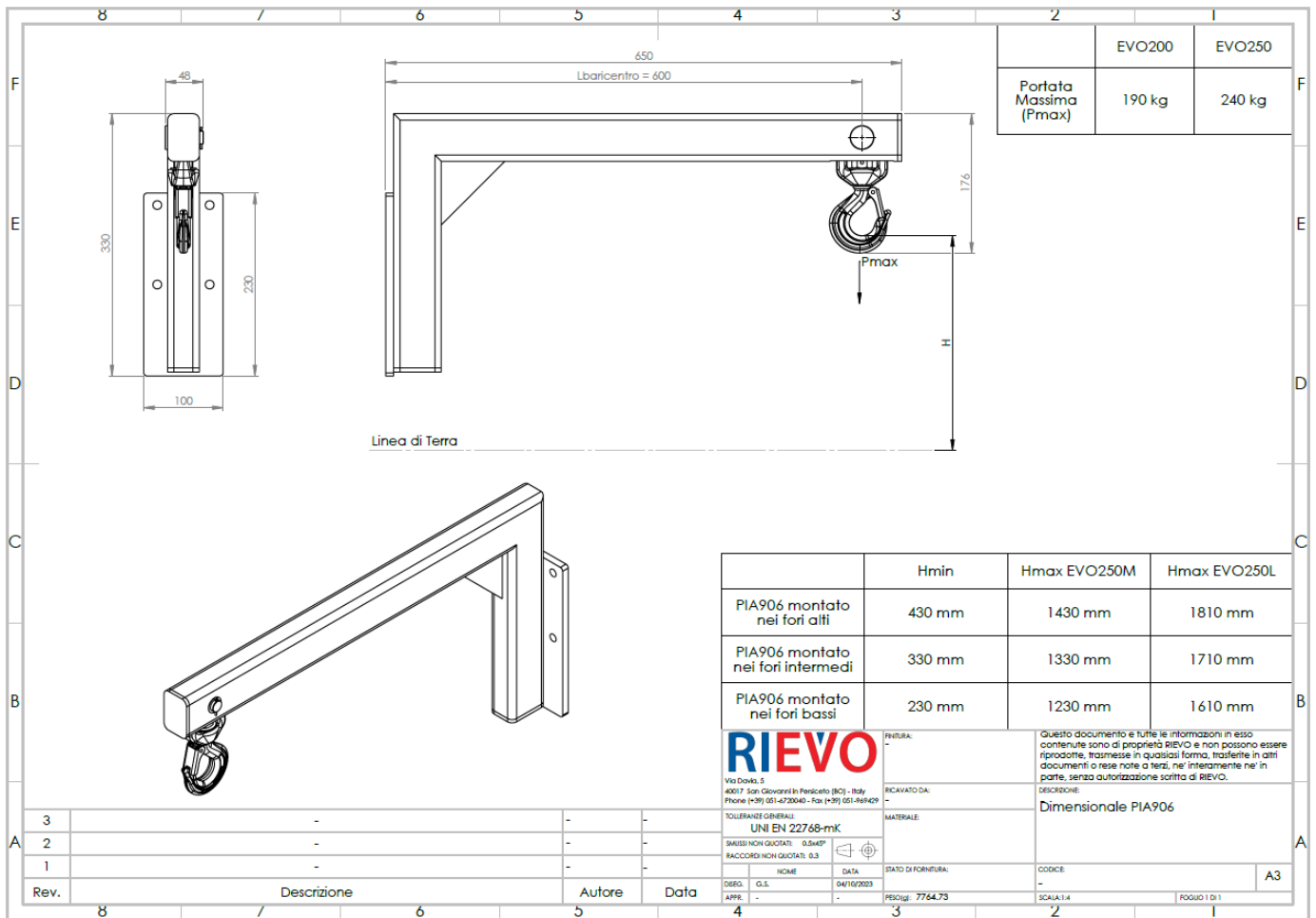
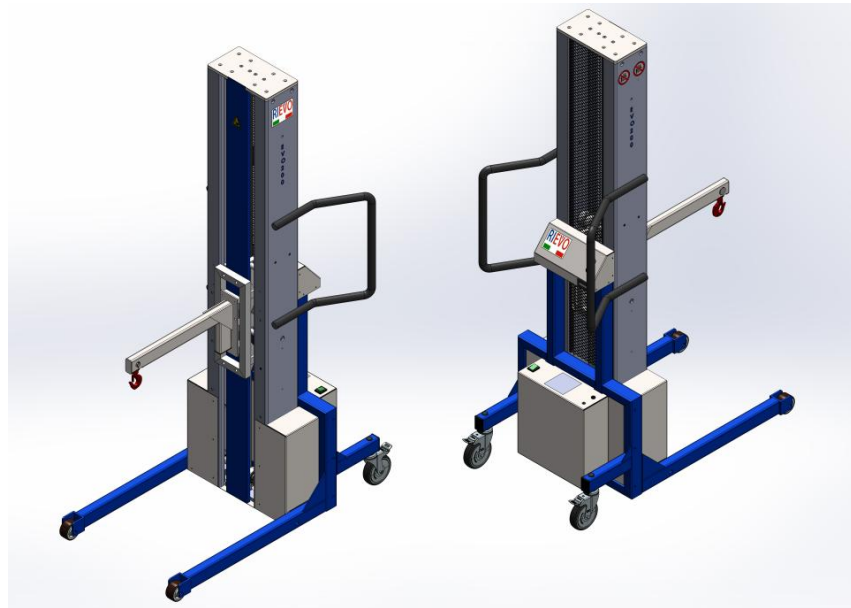


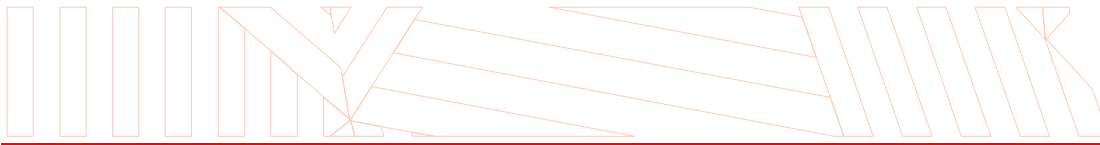
EVO200 LIFTER WITH ALLUMINIUM PLATFORM



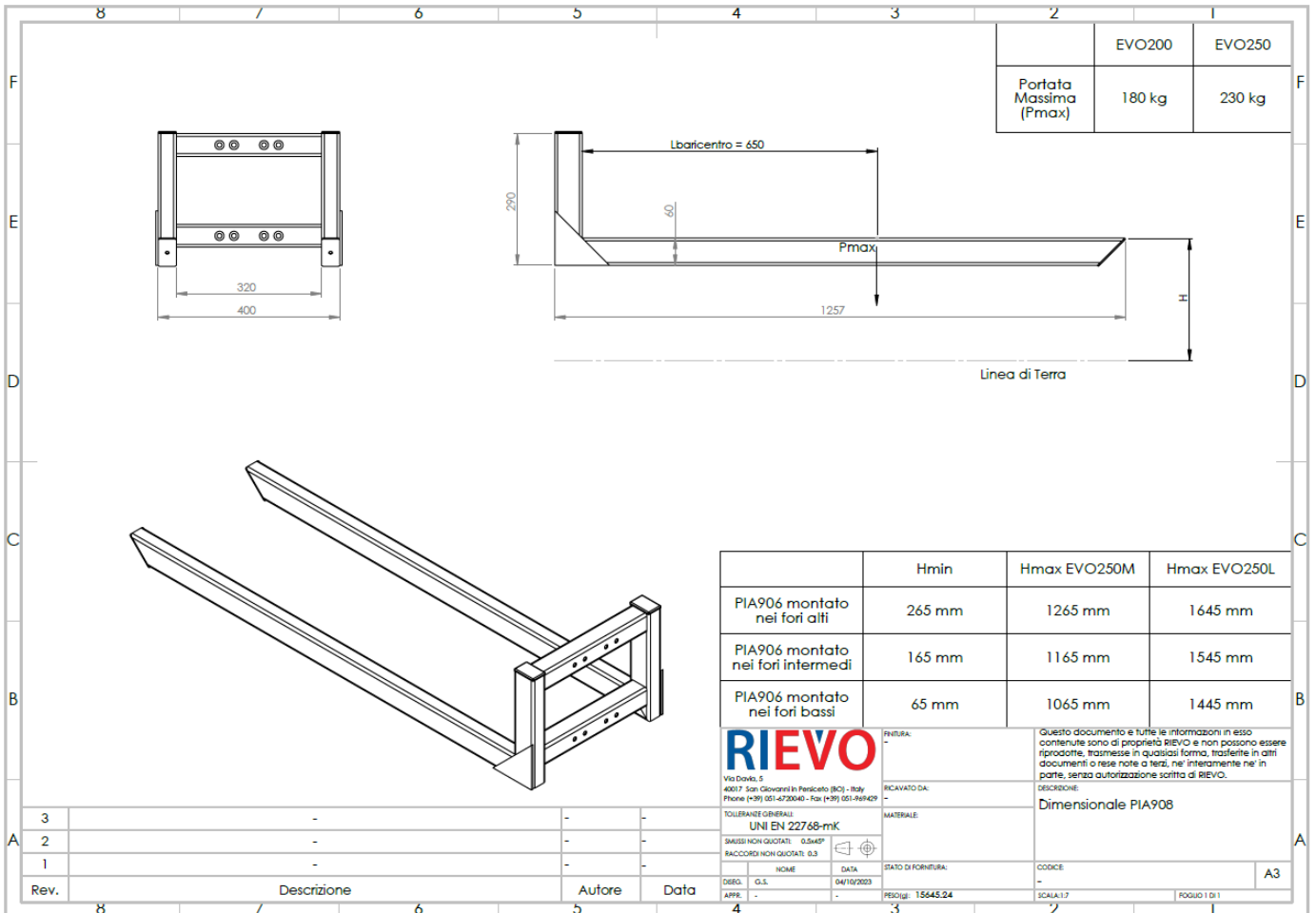
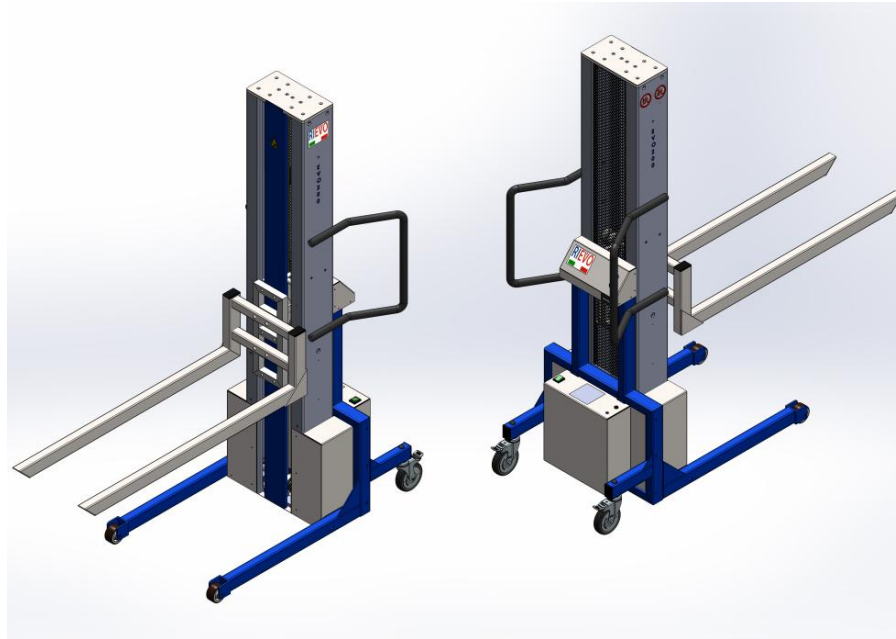


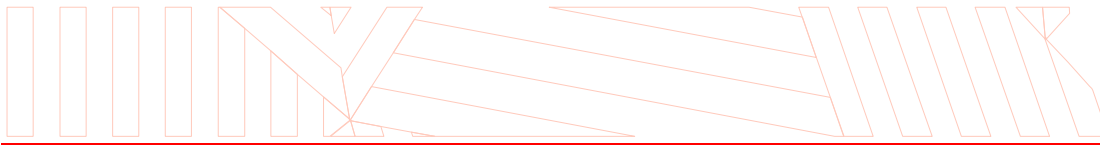
EVO200 LIFTER WITH FRONTAL HOOK



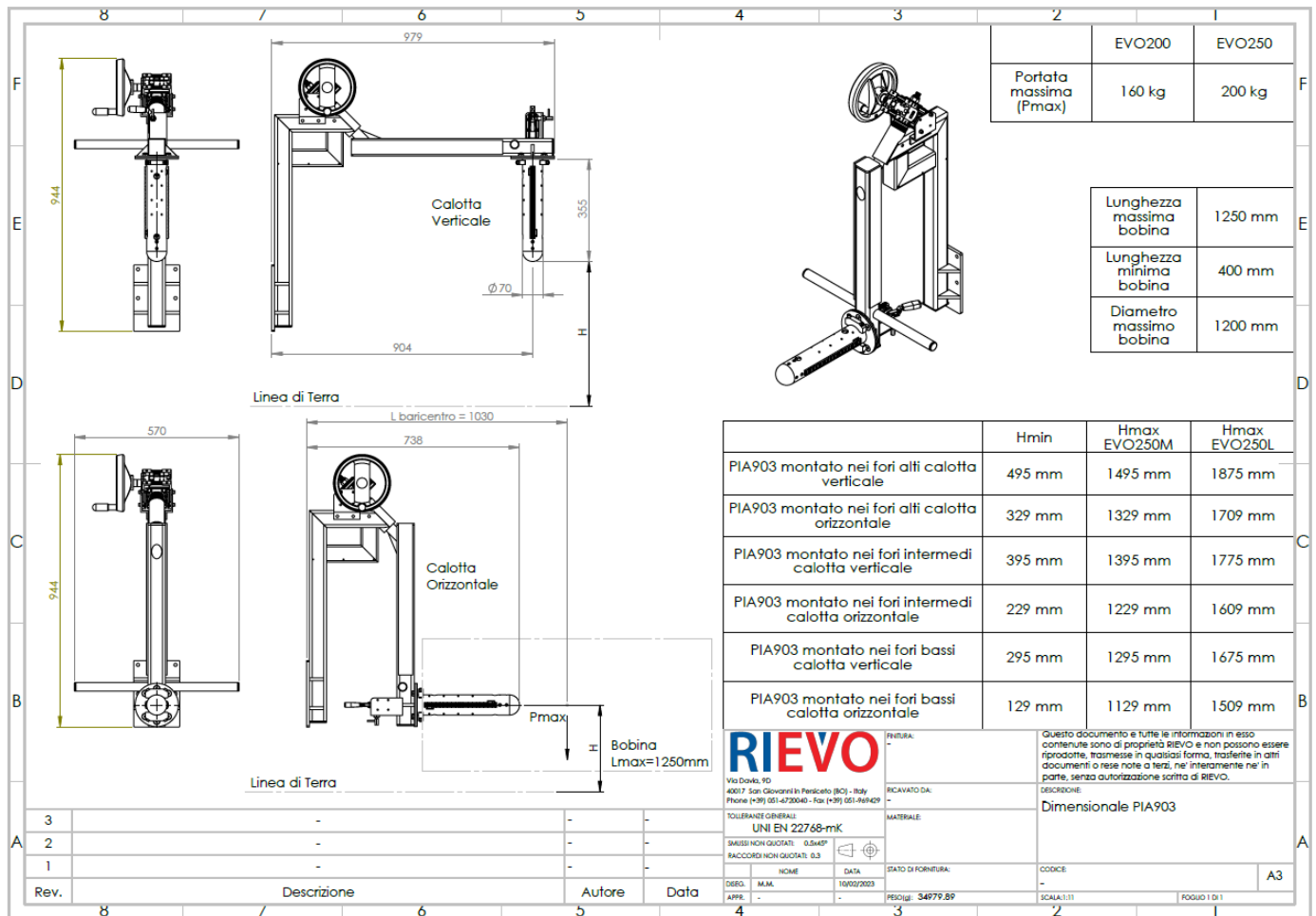
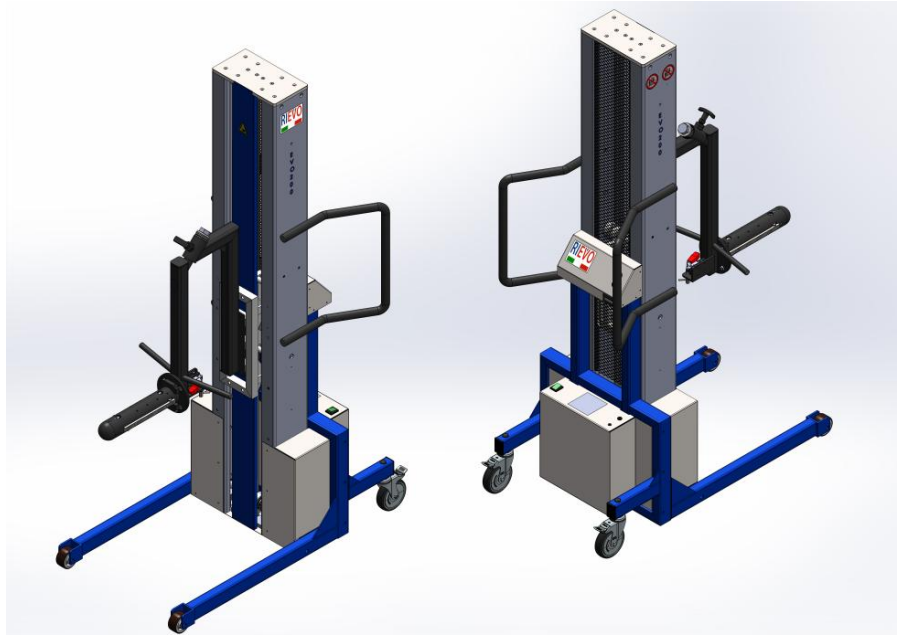


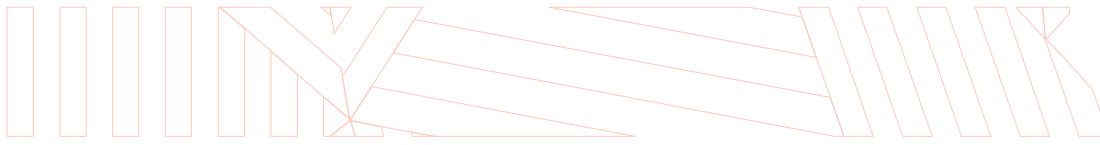
EVO200 LIFTER WITH PALLET FORK





EVO200 LIFTER WITH REEL TURNER GB9



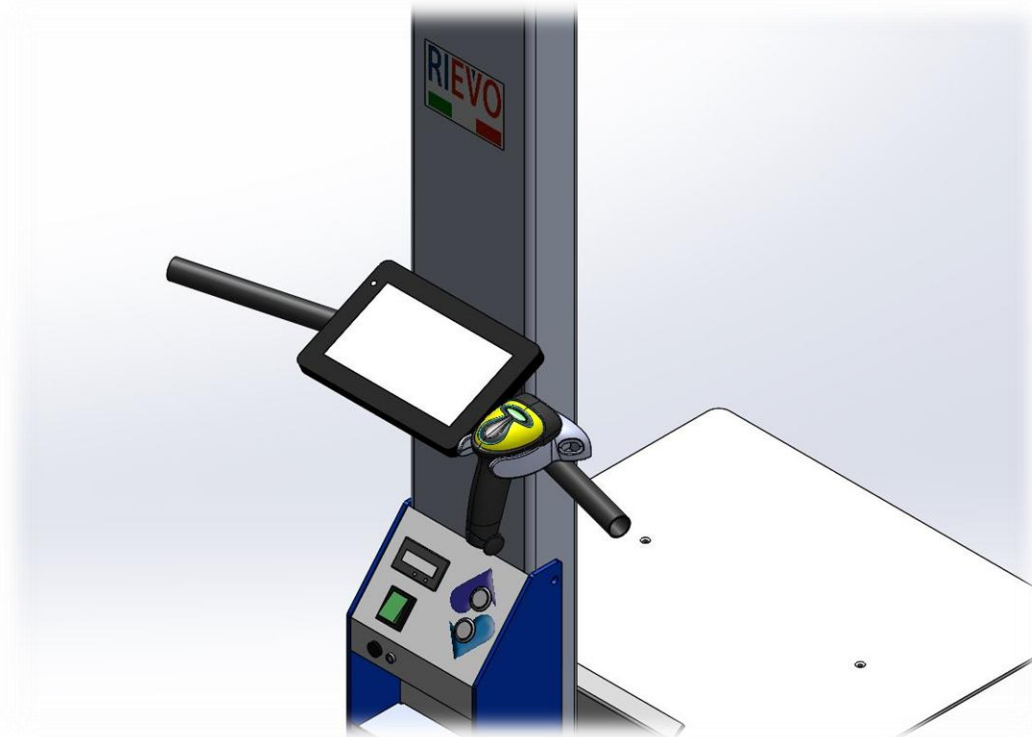


TABLET + BARCODE READER

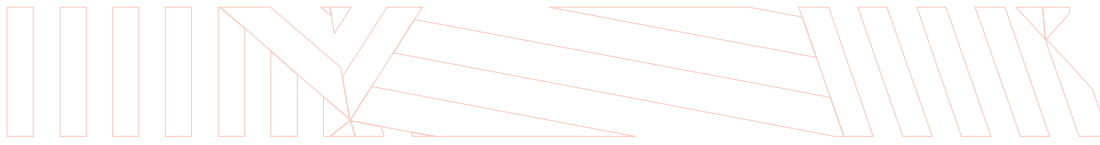
Our **EVOLIFT** lifters with the TABLET as an optional fall into the “dispositives for man-machine interaction and betterment of ergonomcy and safety in “4.0” logic workplaces” as “systems for lifting/translating heavy weights or high temperatures objects capable to ease in an intelligent/robotized/interactive manner the task of the operator” category.

The purchase of such goods enjoys **tax benefits and incentives** according to the respective national laws.

Throught the Tablet with Barcode reader you will not only dispose of a powerful tool to ease your activity and optimize it according to the “digital factory” paradigm, but you will also make it **simpler and faster to manage your documents** and to optimize your information flux management.



- Display: IPS LCD 8" 800 x 1280 IPS in Gorilla Glass
- Memory space: 64GB
- RAM: 2GB
- OS: Windows 10 Home
- Battery: 7500 mAh
- Protection degree: IP67 + resistance to falls from heights up to 1.8m
- Barcode Reader: able to read ID barcodes, wireless connection with USB 2.4GHz wireless adapter and cable.



CONTACT

Registered Office

Stefal S.r.l

Via Luigi Davia, 9D

40017 San Giovanni in Persiceto (BO)

Operative headquarters

Divisione Rievo

Via Luigi Davia, 5

40017 San Giovanni in Persiceto (BO)

C.F. 01239530379 - P.IVA 00540721206

Tel. (+39) 051- 6871609 | sales@rievo.it

VISIT OUR WEB SITE :

www.rievo.it | www.stefal-cablaggi.it

FOLLOW US :

[YOUTUBE](#)

[LINKEDIN](#)