

RIEVO

**WE LIFT
YOUR WORK**



EVO 150

YEAR 2022

RIEVO divisione R & D di Stefal S.r.l. | Via L. Davia, 5 40017 San Giovanni in Persiceto (BO) – Italia
www.rievo.it | sales@rievo.it



THE COMPANY



Rievo is the **R&D department** of Stefal Srl. We develop, design and produce platform for lifting and transport of light industrial loads.

Research and development, design, **production**, are all made in Italy, in San Giovanni in Persiceto (Bologna). 80% of the raw materials we employ is of European origin.

An organized production line and our stock allow us to be extremely ready and flexible to satisfy our customers' requests with particular regard to the **supply speed**.

We supply our customers with **assistance** and **maintenance** services in order to personally manage any eventual problem and to provide a timely intervention in order to minimize the inconveniences.





EVOLIFT LINE

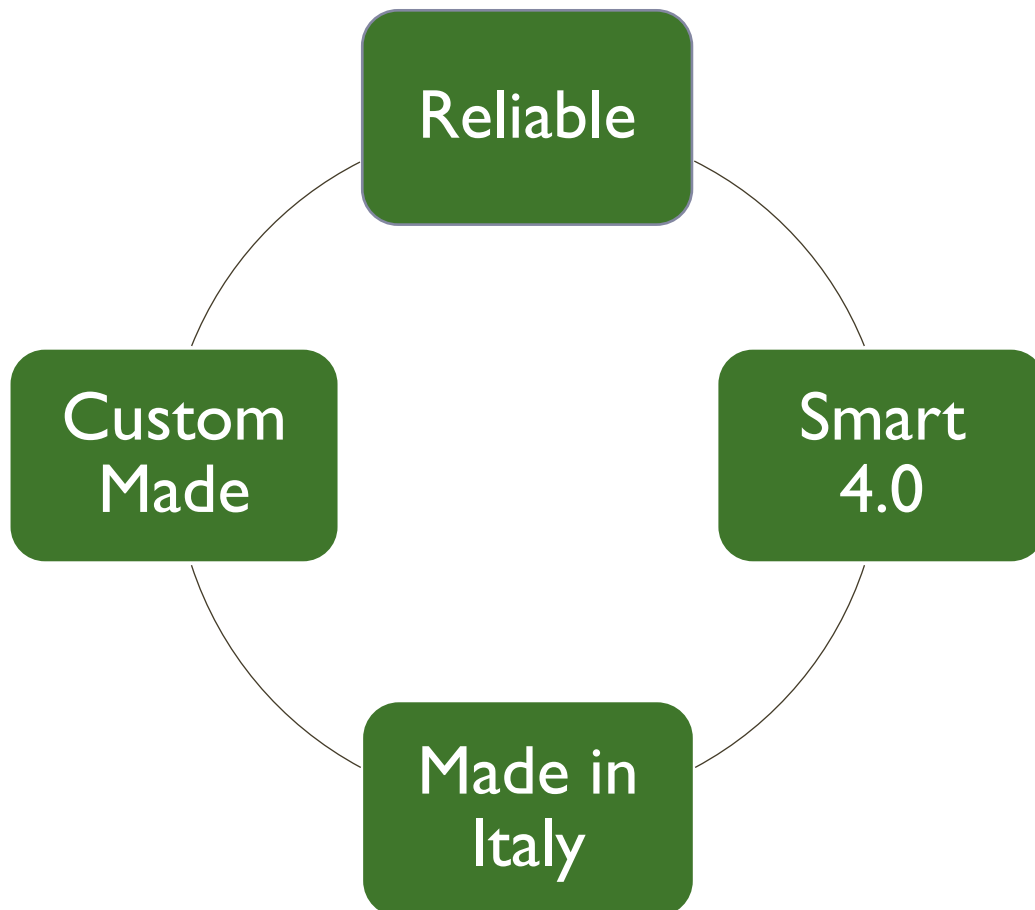
REGULATIONS

Our lifters satisfy all CE regulations and are furnished of CE label.

WARRANTY

Our products are covered by a 12 months warranty starting from the delivery date.

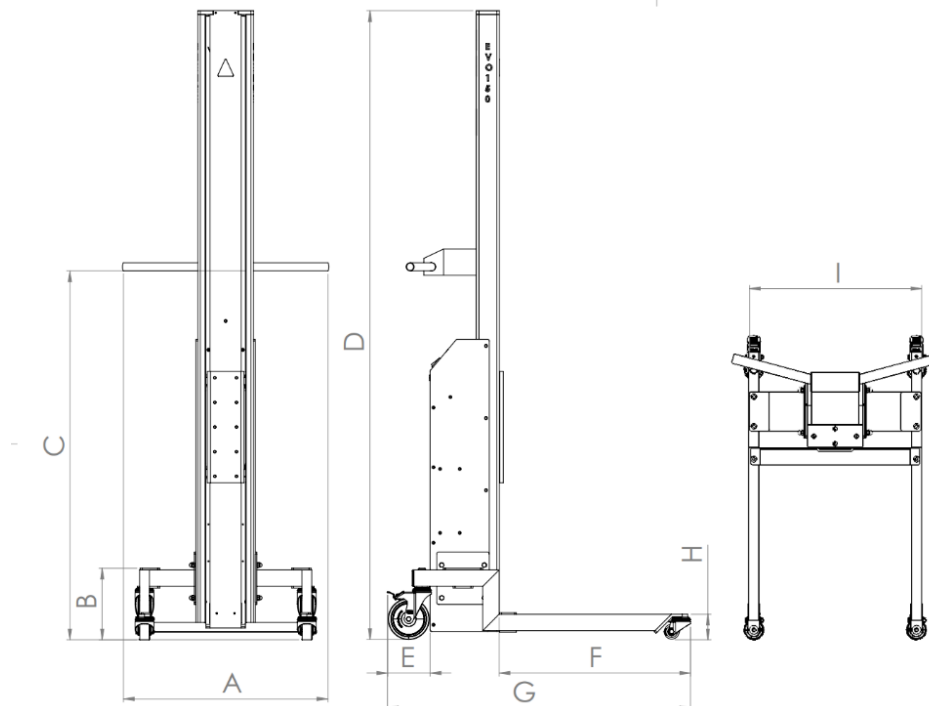
OUR STRONG POINTS





TECHNICAL DATA

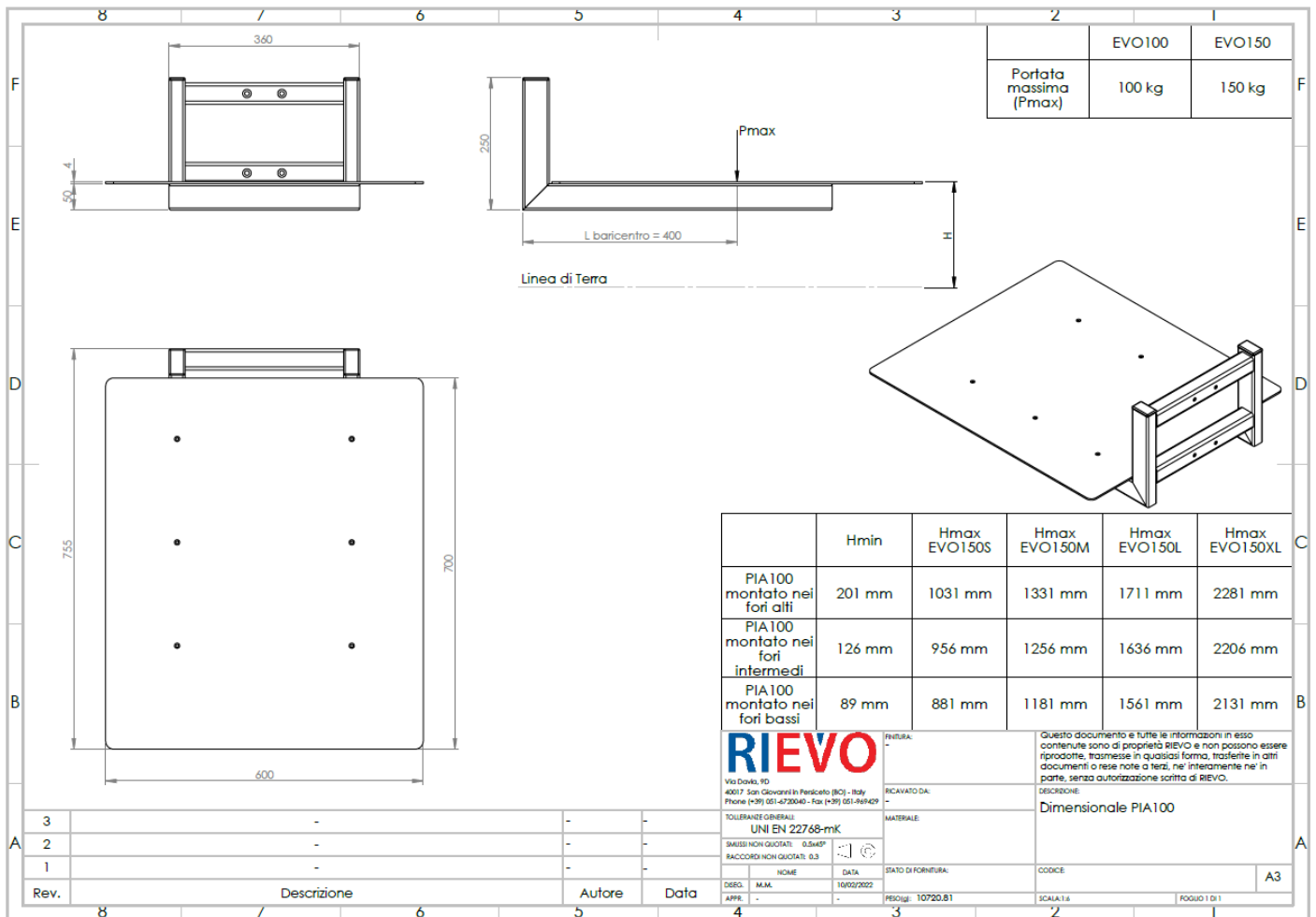
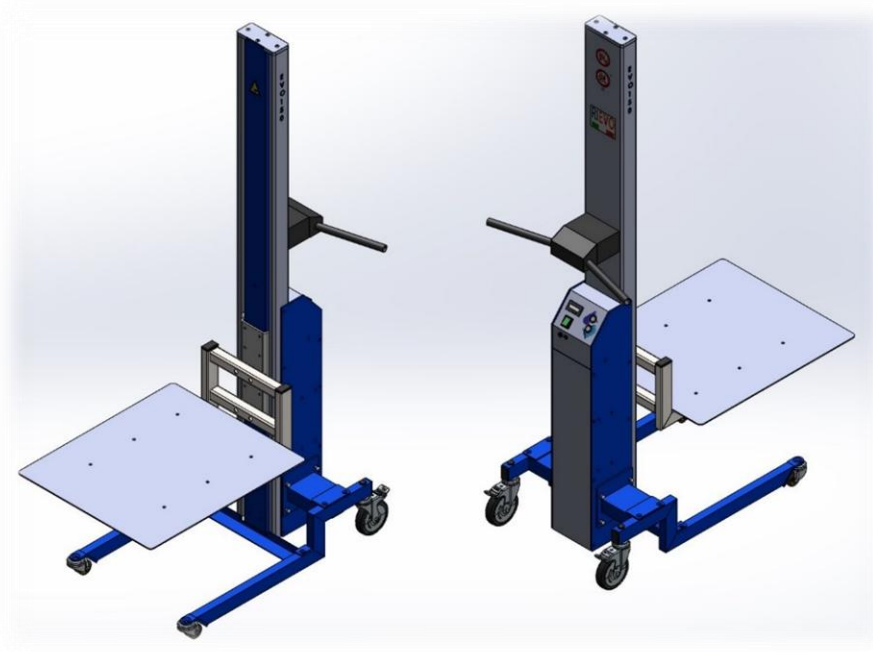
- Maximum capacity: 150 Kg
- Aluminum and steel structure to guarantee strength, lightness and an easy handling
- Weight of the truck (without accessories): about 58 Kg to 150 kg (varying in case of ballasts)
- Powered lift and descent movement (speed 75mm/s) with rubber toothed belt and steel strands
- Anti-crushing safety dispositive operative during the descent movement in all models
- 24 V power supply (2 12 V 26 Ah batteries)
- LCD display with battery charge status, voltage and charge percent indicator
- “Soft-start” enhanced electronic system with acceleration ramp operative during the lift and descent movement of the lifting dispositive in order to allow a better positioning precision
- Lowered front spars in order to facilitate insertion under pallets or similar
- Pivoting front and rear wheels equipped with bearings in order to guarantee better handling smoothness and easiness
- Blocking dispositive on the rear wheels
- Energy recovery system during downwards movement
- At least 100 up- and downwards cycles autonomy with maximum load
- Complete charging in 8 hours with supplied charger
- Absence of oil, grease in internal mechanisms
- Absence of Teflon components
- Integrated safety fusible for system protection in case of malfunctions, accessible from outside
- Side plaque with identificatory, dimensional and functional data of the machine and CE marking
- Accompanying kit: use and maintenance manual, CE certificate, list of checking tests, external 220 V charger



Product code	Dimensions mm									Weight kg	Lifting height mm
	A	B	C	D	E	F	G	H	I		
EVO150 XL	629	218	1125	2487	131	584	925	78	525	68	2075
EVO150 L	629	218	1125	1917	131	584	925	78	525	65	1510
EVO150 M	629	218	1125	1536	131	584	925	78	525	62	1125
EVO150 S	629	218	1125	1236	131	584	925	78	525	58	825

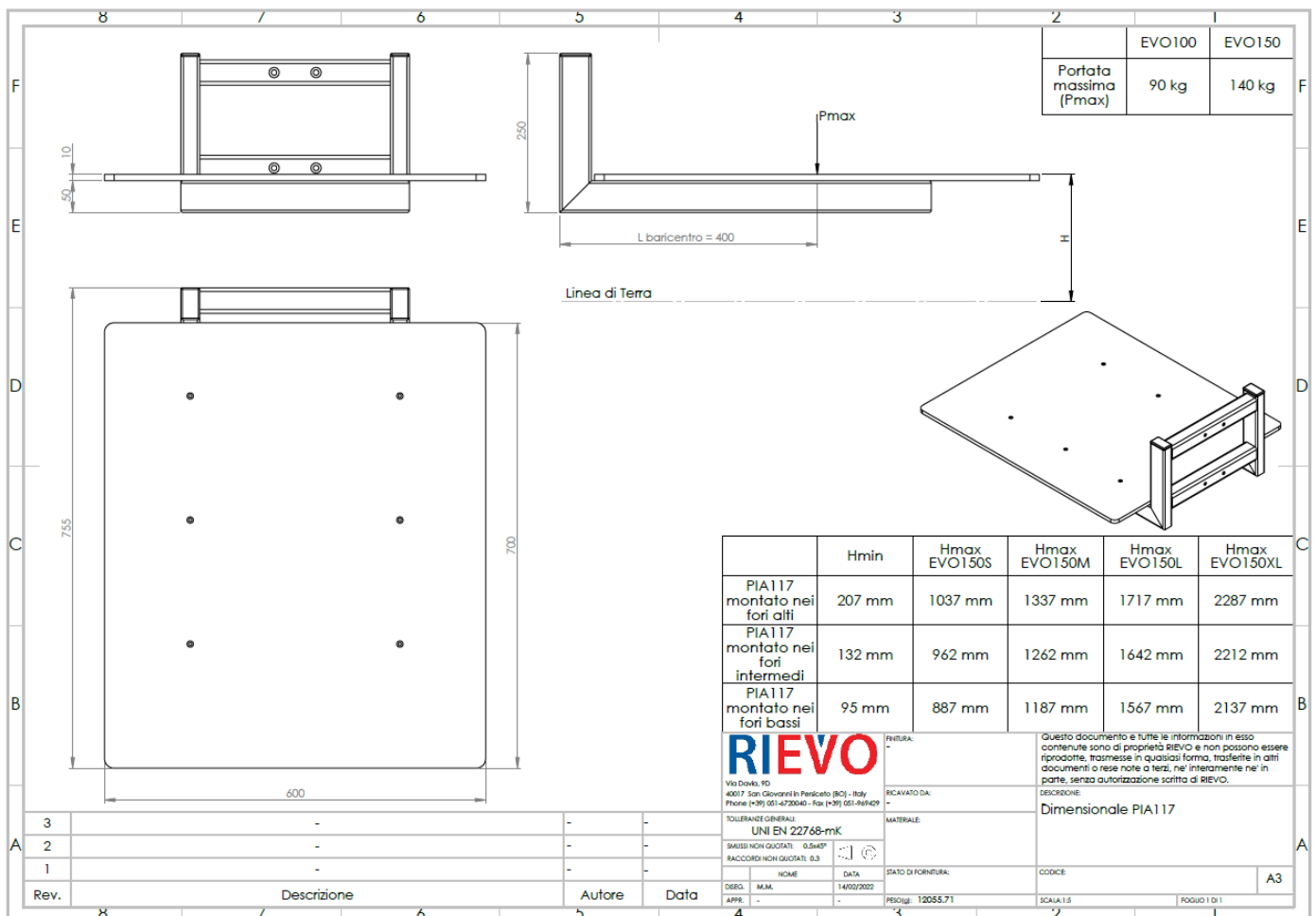
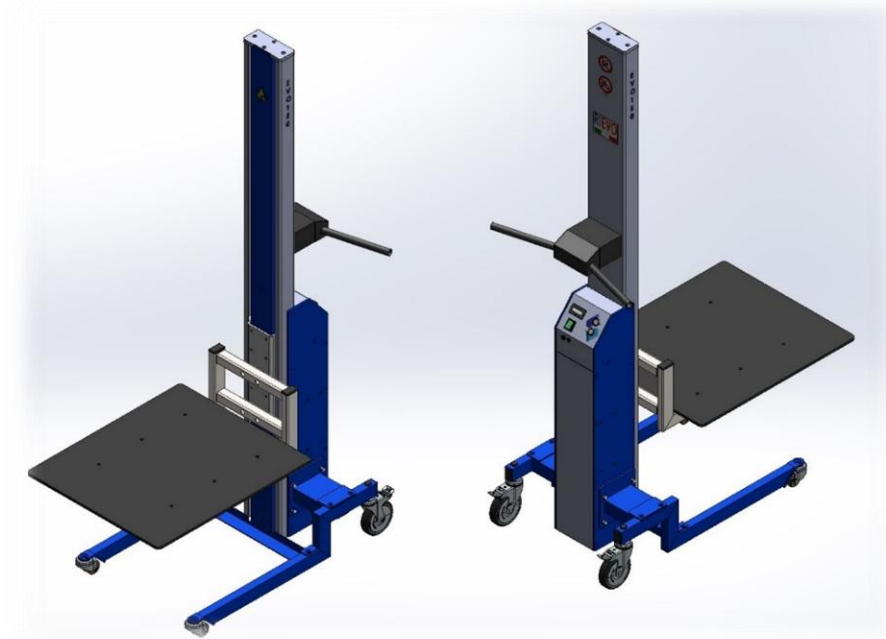


EVO150 LIFTER WITH ALUMINIUM PLATFORM



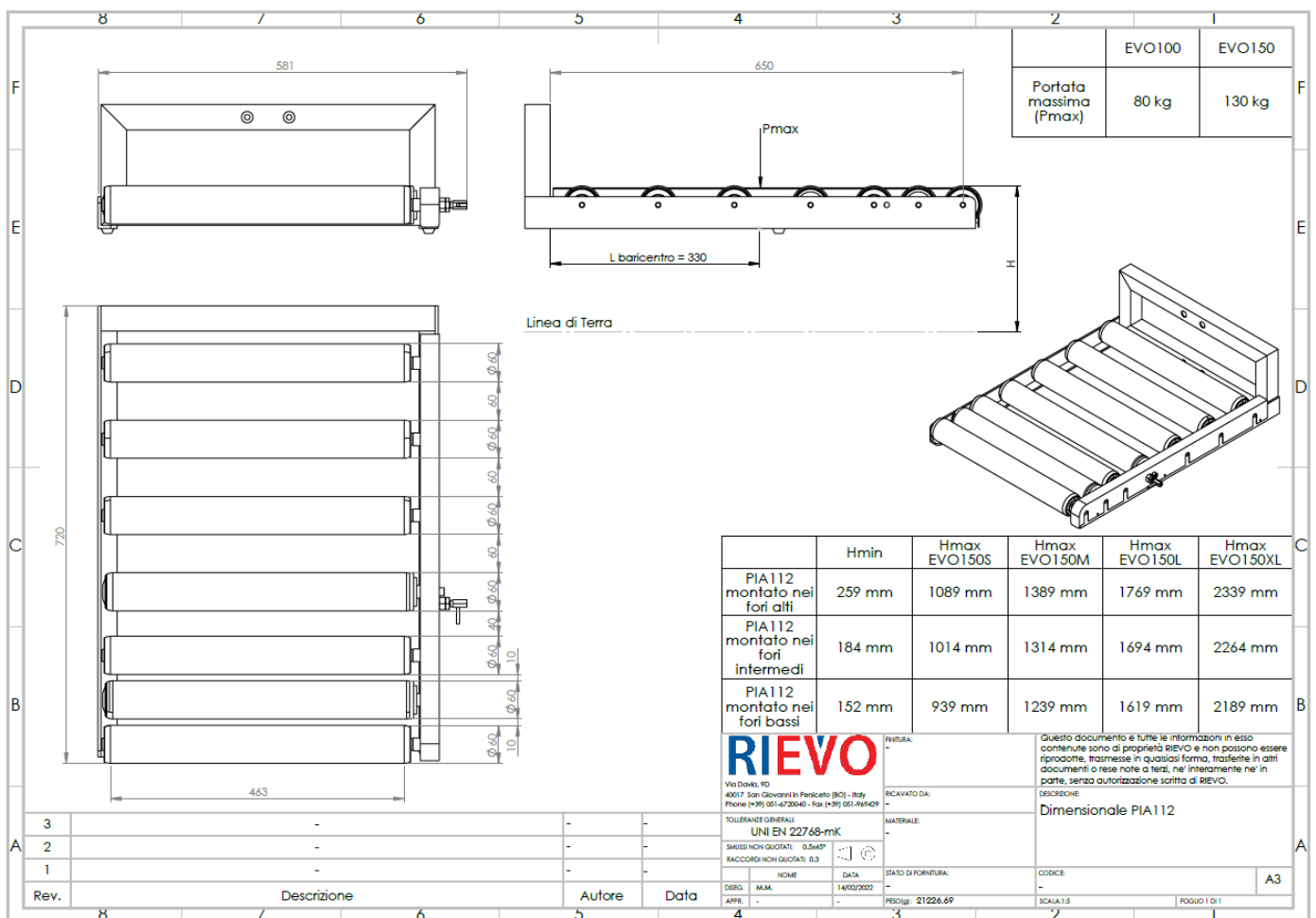
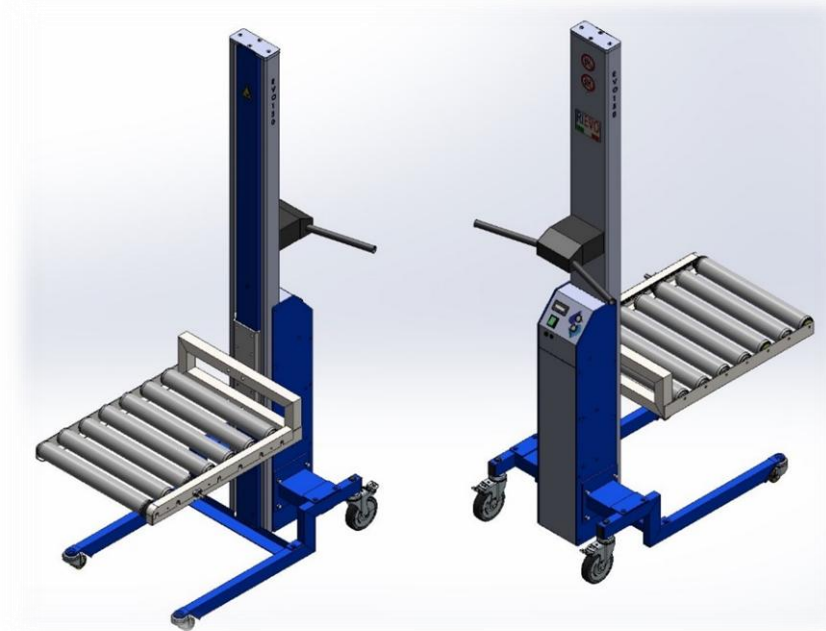


EVO150 LIFTER WITH BLACK POM PLATFORM



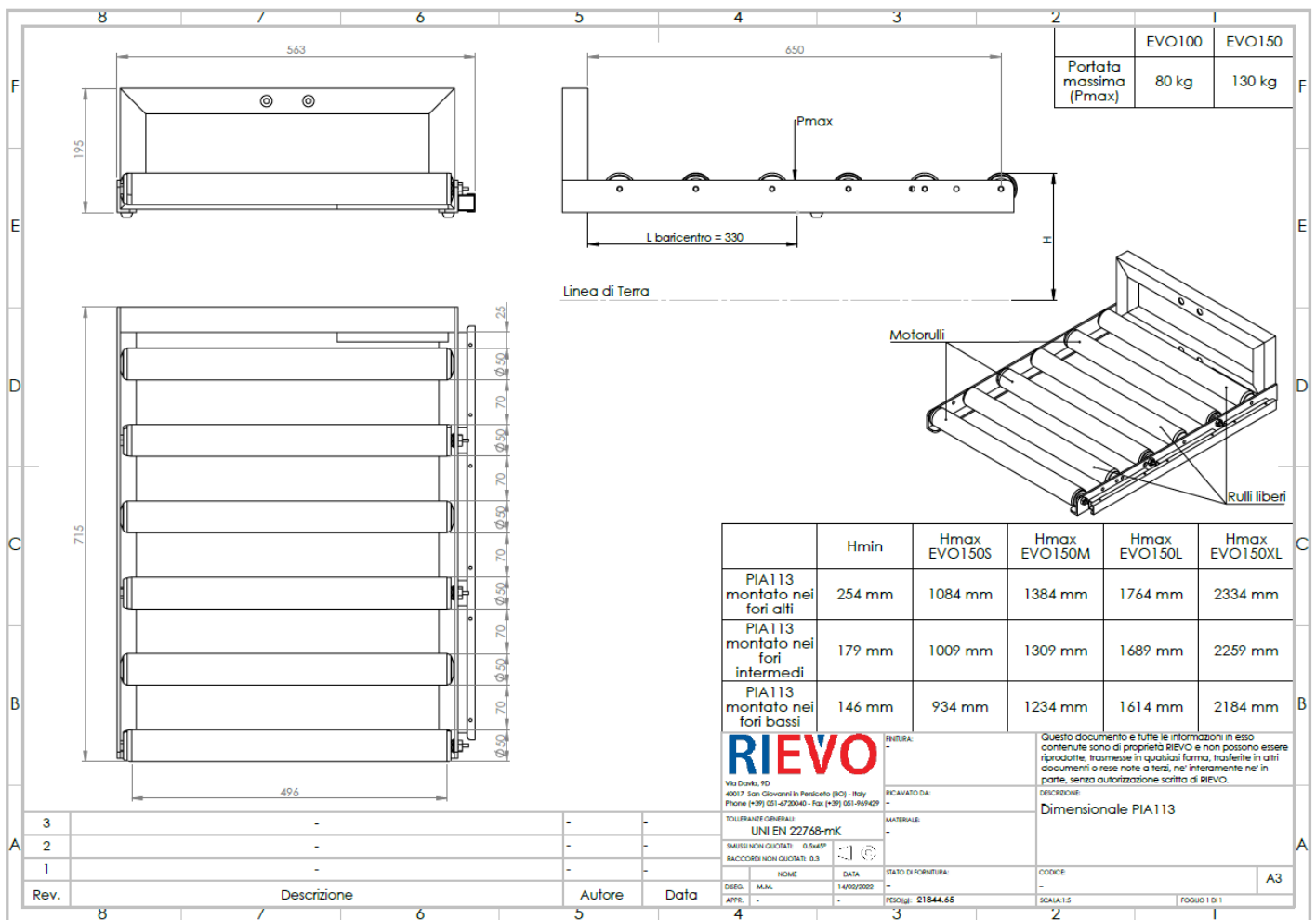
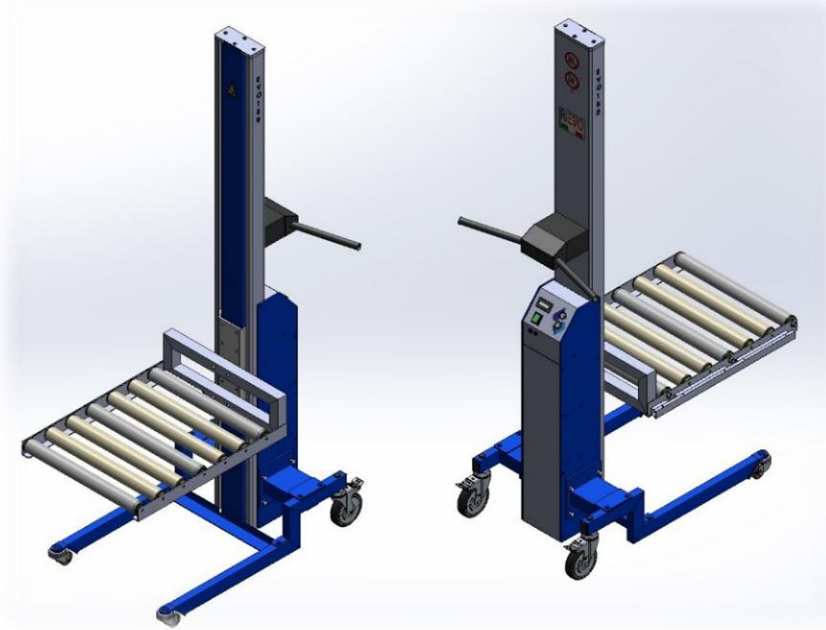


EVO150 LIFTER WITH LONGITUDINAL MANUAL ROLLERS



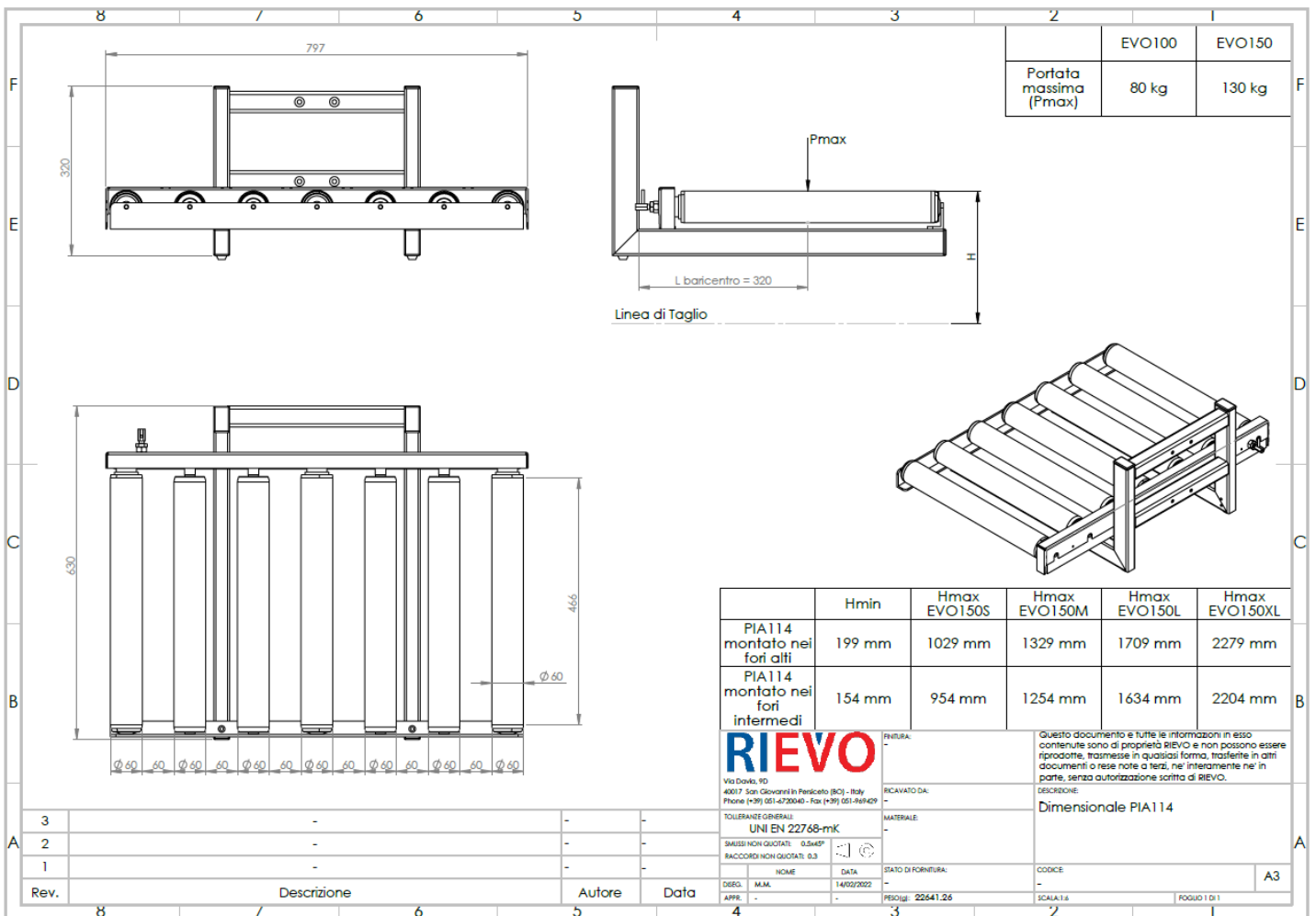
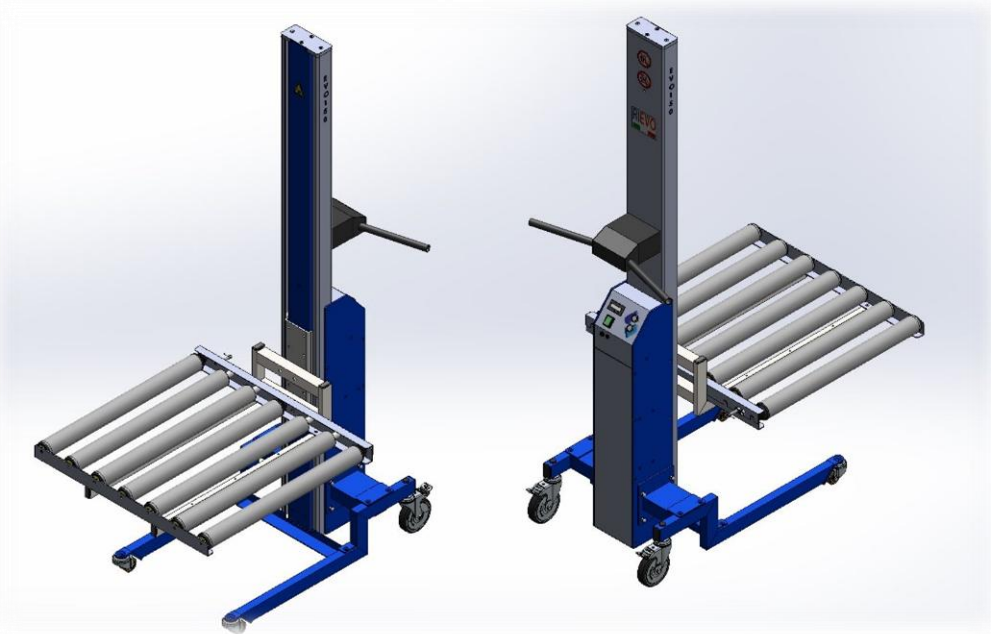


EVO 150 LIFTER WITH 3 LONGITUDINAL MOTORIZED ROLLERS



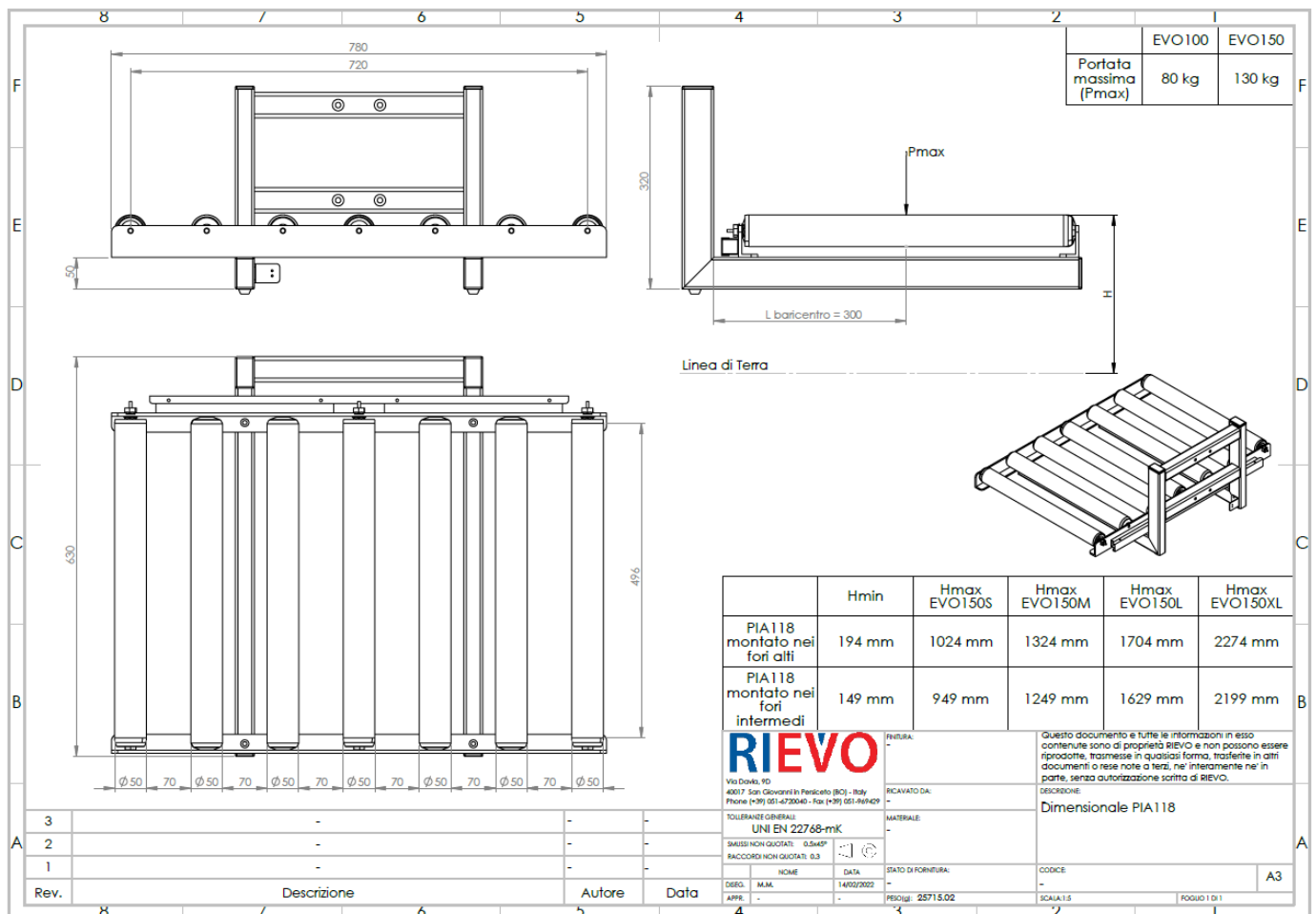


EVO150 LIFTER WITH TRANSVERSAL ROLLERS



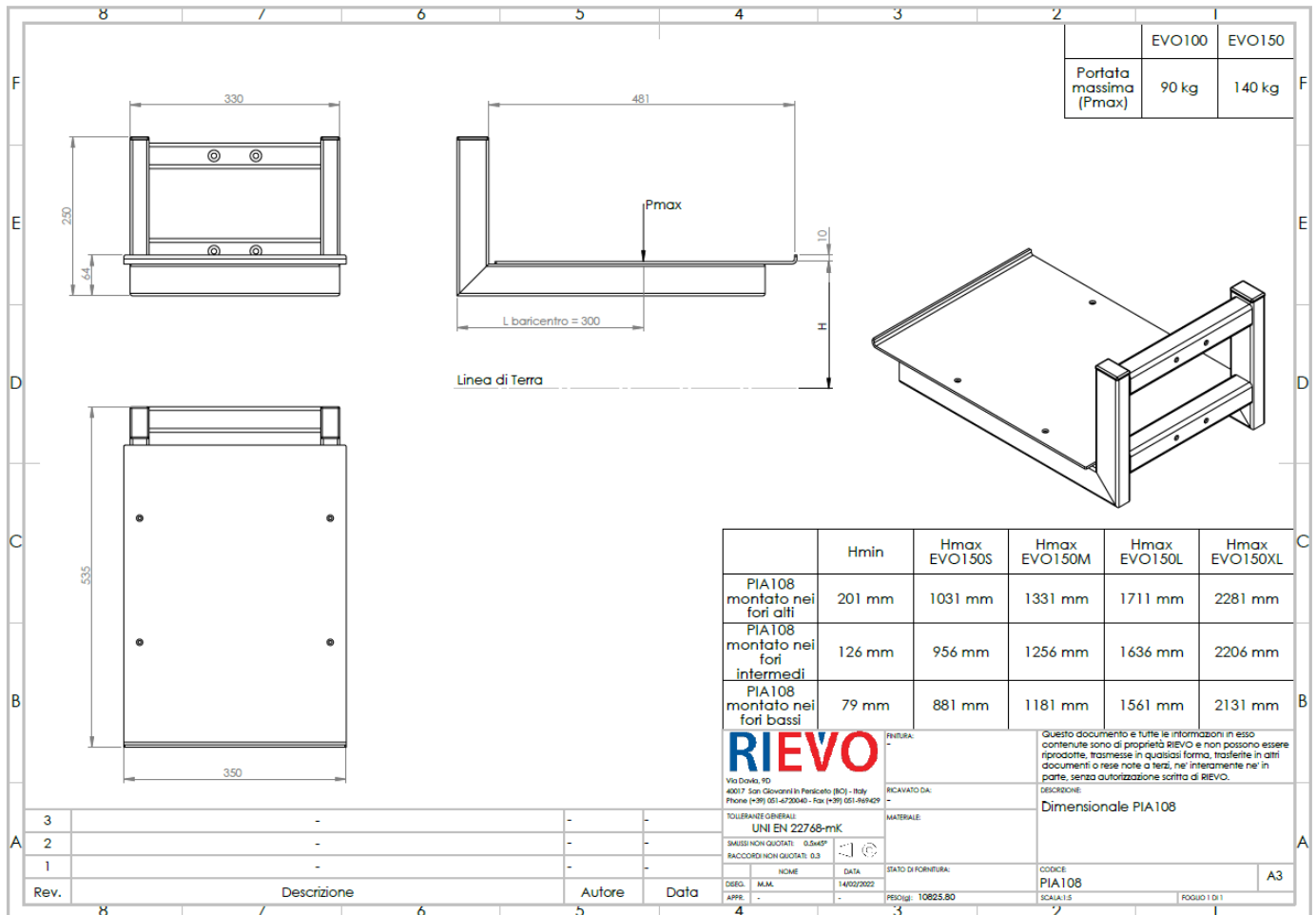
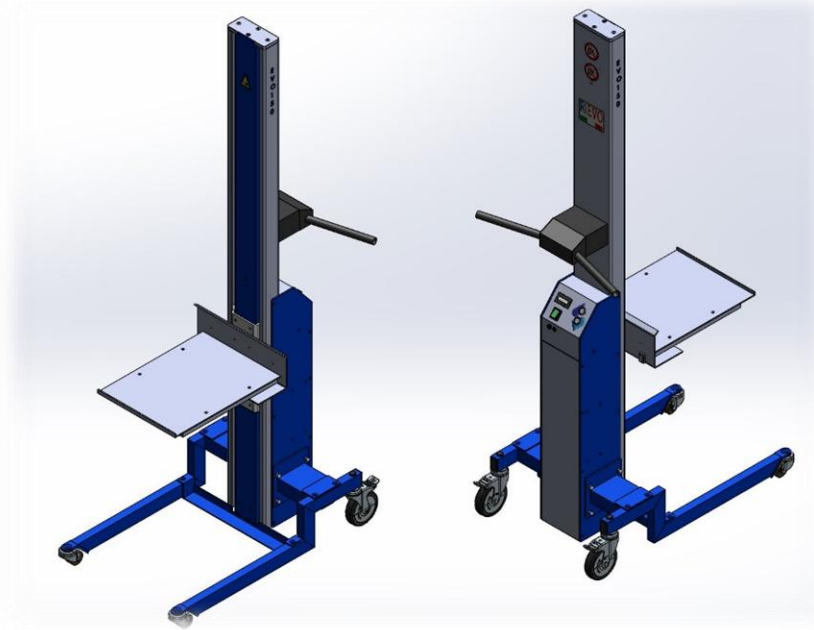


EVO150 LIFTER WITH 3 MOTORIZED TRANSVERSAL ROLLERS



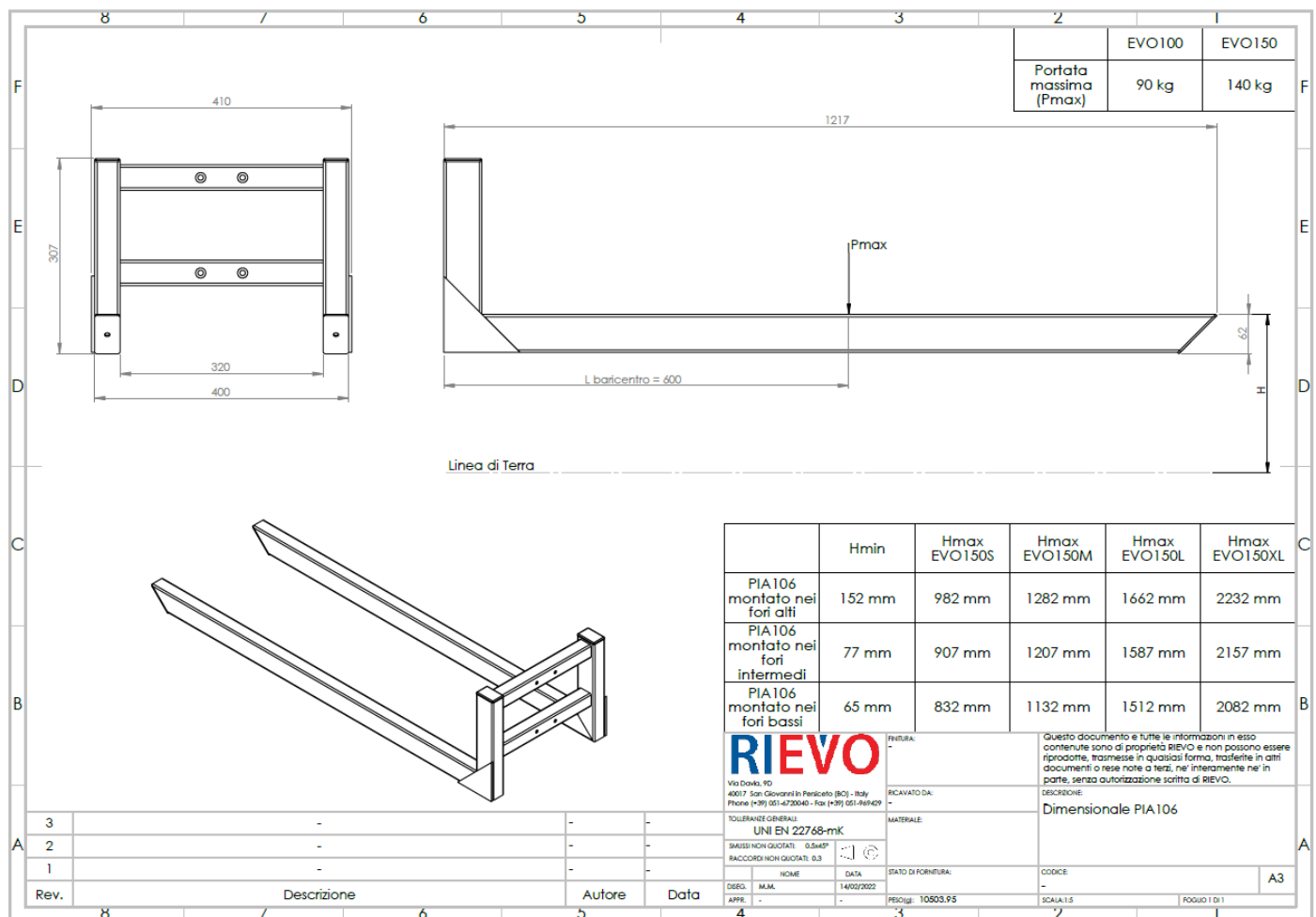


EVO150 LIFTER WITH FORK FOR BOXES



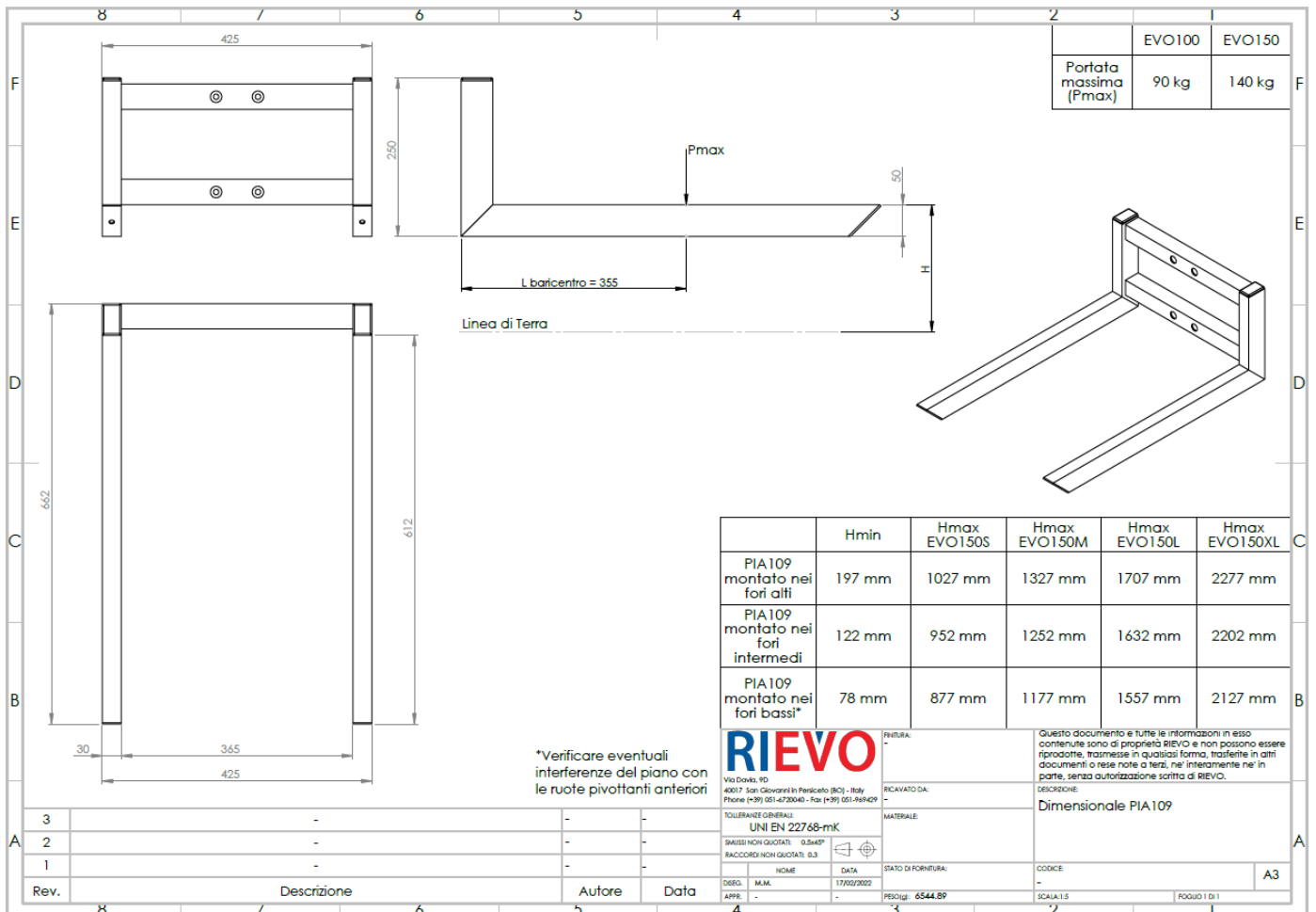


EVO150 LIFTER WITH PALLET FORK



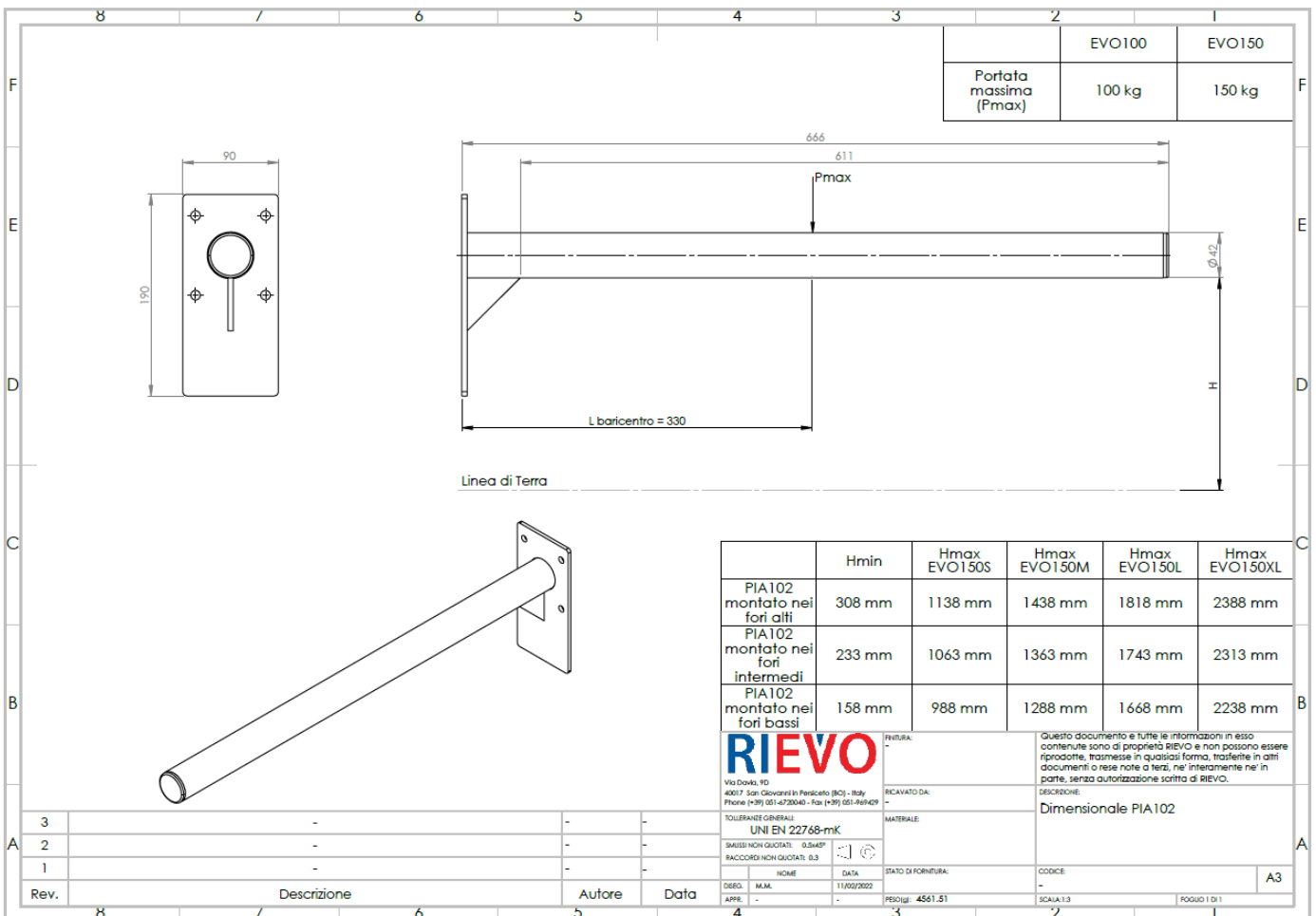


EVO150 LIFTER WITH "HEAVY" FORK



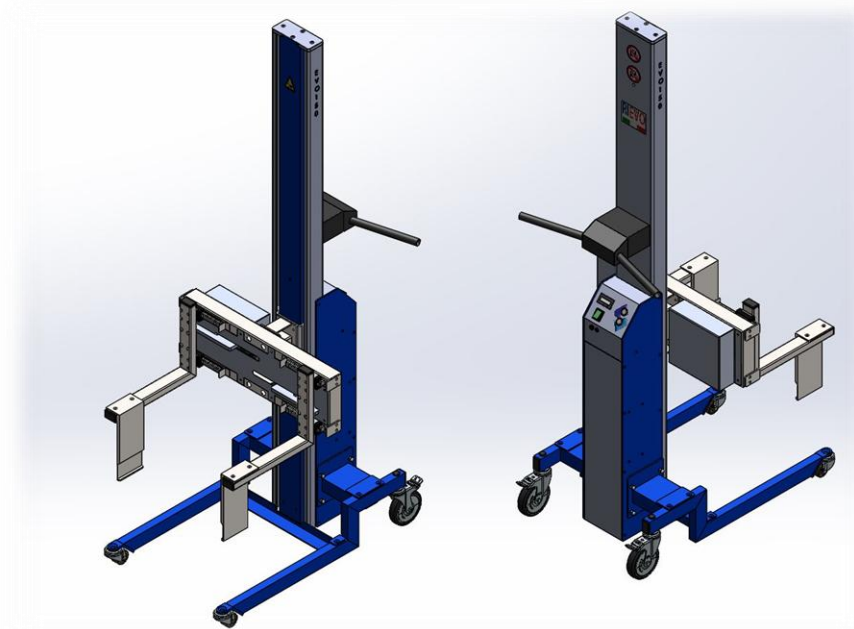


EVO 150 LIFTER WITH SPOOL TUBE





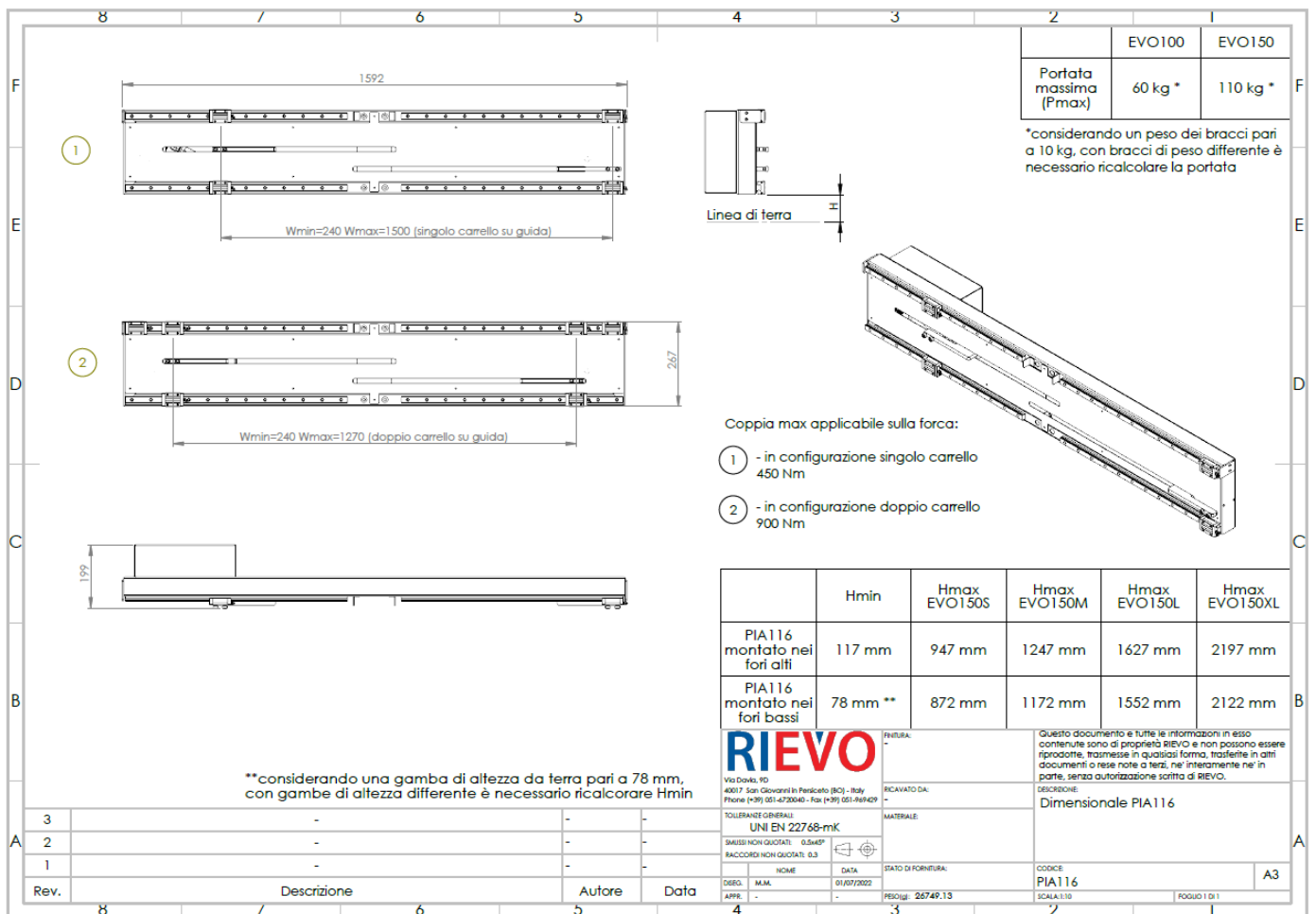
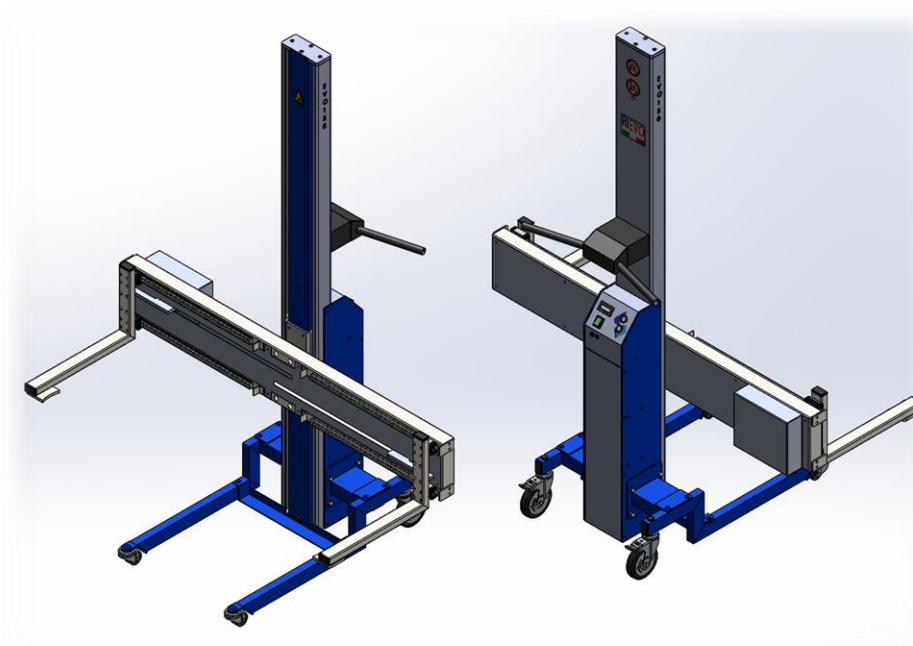
EVO150 LIFTER WITH MOTORIZED FORK



8	7	6	5	4	3	2	1																									
F								F																								
E								F																								
D								D																								
C								C																								
B	<table border="1" style="width: 100%; border-collapse: collapse;"> <tr> <td></td> <td style="text-align: center;">EVO100</td> <td style="text-align: center;">EVO150</td> </tr> <tr> <td style="text-align: center;">Portata massima (Pmax)</td> <td style="text-align: center;">70 kg *</td> <td style="text-align: center;">120 kg *</td> </tr> </table> <p>*considerando un peso dei bracci pari a 10 kg, con bracci di peso differente è necessario ricalcolare la portata</p> <p>Massima coppia applicabile sulla forza 450 Nm Massima forza applicabile dalla forza in apertura/chiusura 400 N</p> <table border="1" style="width: 100%; border-collapse: collapse;"> <thead> <tr> <th></th> <th>Hmin</th> <th>Hmax EVO150S</th> <th>Hmax EVO150M</th> <th>Hmax EVO150L</th> <th>Hmax EVO150XL</th> </tr> </thead> <tbody> <tr> <td>PIA115 montato nei fori alti</td> <td style="text-align: center;">121 mm</td> <td style="text-align: center;">951 mm</td> <td style="text-align: center;">1251 mm</td> <td style="text-align: center;">1631 mm</td> <td style="text-align: center;">2201 mm</td> </tr> <tr> <td>PIA115 montato nei fori bassi</td> <td style="text-align: center;">82 mm</td> <td style="text-align: center;">876 mm</td> <td style="text-align: center;">1176 mm</td> <td style="text-align: center;">1556 mm</td> <td style="text-align: center;">2126 mm</td> </tr> </tbody> </table>								EVO100	EVO150	Portata massima (Pmax)	70 kg *	120 kg *		Hmin	Hmax EVO150S	Hmax EVO150M	Hmax EVO150L	Hmax EVO150XL	PIA115 montato nei fori alti	121 mm	951 mm	1251 mm	1631 mm	2201 mm	PIA115 montato nei fori bassi	82 mm	876 mm	1176 mm	1556 mm	2126 mm	B
								EVO100	EVO150																							
Portata massima (Pmax)	70 kg *	120 kg *																														
	Hmin	Hmax EVO150S	Hmax EVO150M	Hmax EVO150L	Hmax EVO150XL																											
PIA115 montato nei fori alti	121 mm	951 mm	1251 mm	1631 mm	2201 mm																											
PIA115 montato nei fori bassi	82 mm	876 mm	1176 mm	1556 mm	2126 mm																											
A	<table border="1" style="width: 100%; border-collapse: collapse;"> <tr> <td style="text-align: center;">RIEVO</td> <td style="font-size: 8px;"> Via Dada, 90 40017 San Giovanni in Pensileto (BO) - Italy Phone (+39) 051-4720048 - Fax (+39) 051-949429 </td> <td style="font-size: 8px;"> Questo documento e tutte le informazioni in esso contenute sono di proprietà RIEVO e non possono essere riprodotte, trasmesse in qualsiasi forma, trasferite in altri documenti o rese note a terzi, né interamente né in parte, senza autorizzazione scritta di RIEVO. </td> </tr> <tr> <td style="font-size: 8px;"> TOLLERANZE GENERALI: UNI EN 22768-mK SMISSEI NON QUOTATI: 0,5x40P RACCORDI NON QUOTATI: 0,3 </td> <td style="font-size: 8px;"> RICEVATO DA: - MATERIALE: - </td> <td style="font-size: 8px;"> DESCRIZIONE: Dimensionale PIA115 </td> </tr> <tr> <td style="font-size: 8px;"> DISEG. M.M. APPR. - </td> <td style="font-size: 8px;"> DATA 09/02/2023 </td> <td style="font-size: 8px;"> STATO DI FORNITURA: - CODICE: - </td> </tr> <tr> <td style="font-size: 8px;"> Rev. </td> <td style="font-size: 8px;"> Descrizione </td> <td style="font-size: 8px;"> Autore </td> <td style="font-size: 8px;"> Data </td> <td style="font-size: 8px;"> PEO/01: 15623.78 </td> <td style="font-size: 8px;"> SCAI/1.5 </td> <td style="font-size: 8px;"> A3 </td> </tr> </table>							RIEVO	Via Dada, 90 40017 San Giovanni in Pensileto (BO) - Italy Phone (+39) 051-4720048 - Fax (+39) 051-949429	Questo documento e tutte le informazioni in esso contenute sono di proprietà RIEVO e non possono essere riprodotte, trasmesse in qualsiasi forma, trasferite in altri documenti o rese note a terzi, né interamente né in parte, senza autorizzazione scritta di RIEVO.	TOLLERANZE GENERALI: UNI EN 22768-mK SMISSEI NON QUOTATI: 0,5x40P RACCORDI NON QUOTATI: 0,3	RICEVATO DA: - MATERIALE: -	DESCRIZIONE: Dimensionale PIA115	DISEG. M.M. APPR. -	DATA 09/02/2023	STATO DI FORNITURA: - CODICE: -	Rev.	Descrizione	Autore	Data	PEO/01: 15623.78	SCAI/1.5	A3	A								
RIEVO								Via Dada, 90 40017 San Giovanni in Pensileto (BO) - Italy Phone (+39) 051-4720048 - Fax (+39) 051-949429	Questo documento e tutte le informazioni in esso contenute sono di proprietà RIEVO e non possono essere riprodotte, trasmesse in qualsiasi forma, trasferite in altri documenti o rese note a terzi, né interamente né in parte, senza autorizzazione scritta di RIEVO.																							
TOLLERANZE GENERALI: UNI EN 22768-mK SMISSEI NON QUOTATI: 0,5x40P RACCORDI NON QUOTATI: 0,3	RICEVATO DA: - MATERIALE: -	DESCRIZIONE: Dimensionale PIA115																														
DISEG. M.M. APPR. -	DATA 09/02/2023	STATO DI FORNITURA: - CODICE: -																														
Rev.	Descrizione	Autore	Data	PEO/01: 15623.78	SCAI/1.5	A3																										
8	7	6	5	4	3	2	1																									

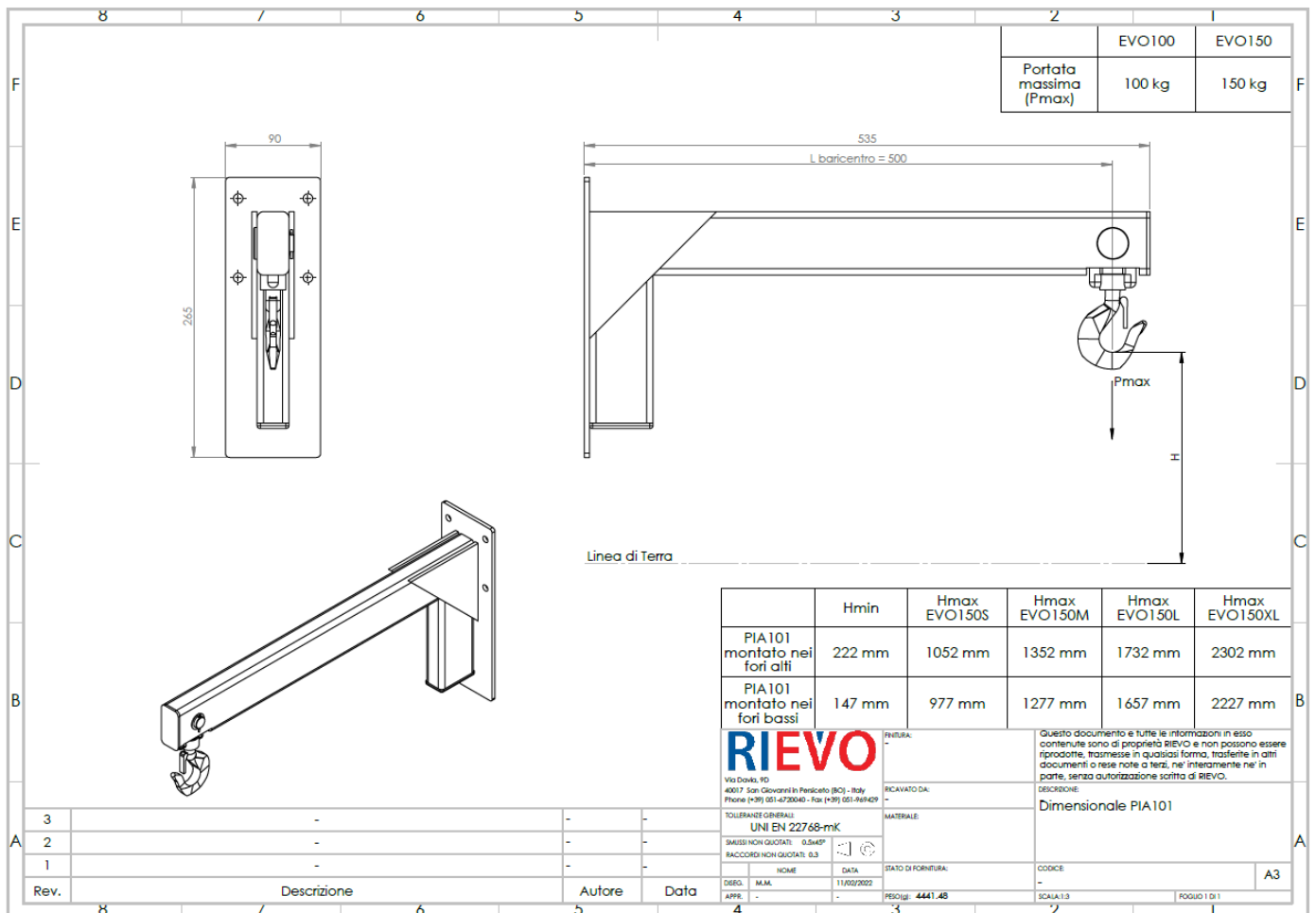


EVO150 LIFTER WITH W: 1492 MOTORIZED FORK





EVO 150 LIFTER WITH L=550 CRANE AND FRONTAL HOOK



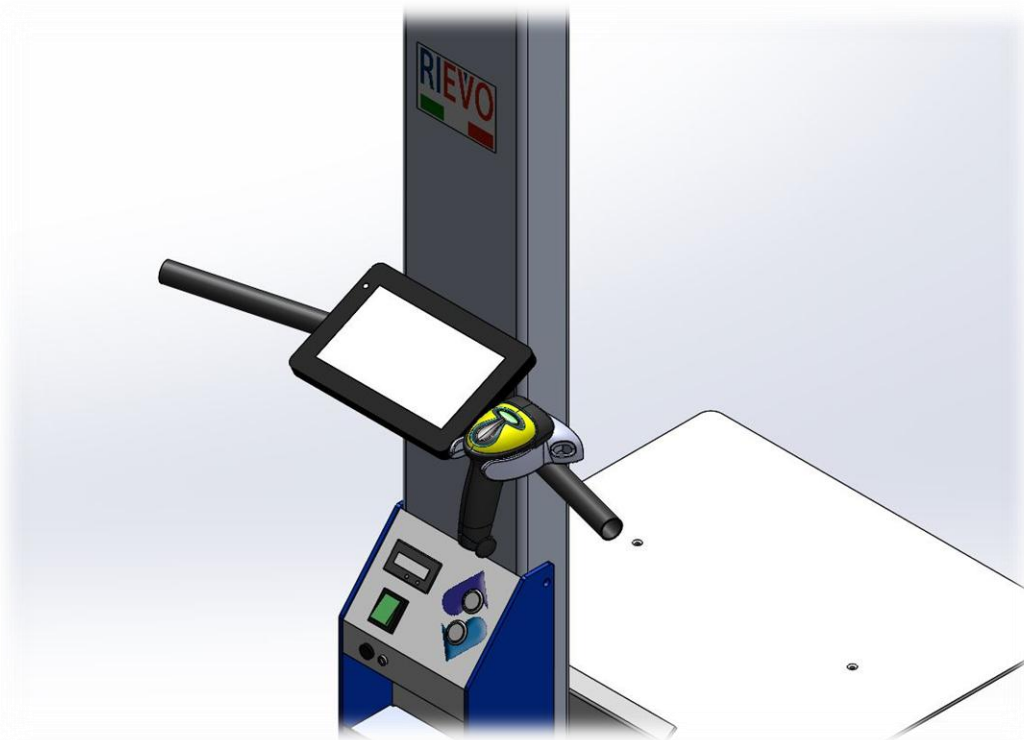


TABLET + BARCODE READER

Our **EVOLIFT** lifters with the TABLET as an optional fall into the “dispositives for man-machine interaction and betterment of ergonomcy and safety in “4.0” logic workplaces” as “systems for lifting/translating heavy weights or high temperatures objects capable to ease in an intelligent/robotized/interactive manner the task of the operator” category.

The purchase of such goods enjoys **tax benefits and incentives** according to the respective national laws.

Throught the Tablet with Barcode reader you will not only dispose of a powerful tool to ease your activity and optimize it according to the “digital factory” paradigm, but you will also make it **simpler and faster to manage your documents** and to optimize your information flux management.



- Tablet brand and model: Caterpillar T20
- Display: IPS LCD 8" 800 x 1280 IPS in Gorilla Glass
- Memory space: 64GB
- RAM: 2GB
- OS: Windows 10 Home
- Battery: 7500 mAh
- Protection degree: IP67 + resistance to falls from heights up to 1.8m
- Barcode Reader: able to read 1D barcodes, wireless connection with USB 2.4GHz wireless adapter and cable.



CONTACT

Registered Office

Stefal S.r.l.

Via Luigi Davia, 9d

40017 San Giovanni in Persiceto (BO)

Operative headquarters

Divisione Rievo

Via Luigi Davia, 5

40017 San Giovanni in Persiceto (BO)

C.F. 01239530379 - P.IVA 00540721206

Tel. (+39) 051- 6871609 | sales@rievo.it

VISIT OUR WEB SITE:

www.rievo.it | www.stefal-cablaggi.it

FOLLOW US:

[YOUTUBE](#)

[LINKEDIN](#)